





THE ITUNES-STYLE SCROLLING IMAGE GENERATOR PLUGIN FOR FINAL CUT PRO,
MOTION, FINAL CUT EXPRESS & AFTER EFFECTS

INTRODUCTION

We have all seen the gorgeous scrolling image carousel that iTunes and now the Leopard finder uses. CoverFlux reproduces that effect for still images by producing movies & project files for FCP, FCE, Motion and After Effects

CoverFlux takes a folder of up to 25 images and automatically displays them in the 3D fan style of Cover Flow. The reflection, preview stack, and displayed stack is all calculated automatically.

FEATURES

- ⌘ One click setup to load images.
- ⌘ Display images in 3D with reflection, ability to move viewpoint in 3D during animation.
- ⌘ Toggle file name visibility on/off.
- ⌘ Alphabetical order or custom order of images - no iPhoto or Aperture round tripping needed.
- ⌘ Not locked to one tempo of display: time each image separately.
- ⌘ Navigate to any image backwards or forwards, skipping images if required.
- ⌘ Resolution independent - stunning quality.
- ⌘ Supports transparency of image & transparency relates into reflection.
- ⌘ Fully customisable font selection, colour & drop shadow parameters.

CURRENT VERSION

CoverFlux v 1.0.2

CoverFlux is free to download and use on any project, broadcast, commercial, event videography, student or home use. CoverFlux can only be downloaded from the industrial revolution website.





THE ITUNES-STYLE SCROLLING IMAGE GENERATOR PLUGIN FOR FINAL CUT PRO,
MOTION, FINAL CUT EXPRESS & AFTER EFFECTS

SYSTEM REQUIREMENTS

Mac OS X Leopard
Version 10.5 or higher
Mac computer with G5 or Intel processor

Final Cut Studio 2
Final Cut Pro version 6.0 or later
Motion version 3.0 or later

Final Cut Express
Version 4.0 or later

Adobe After Effects
Version 8.0 or later (CS3)
Version 9.0 or later (CS4)

One of the following graphics cards:

- ATI Radeon 9550, 9650, 9600, 9600 XT, 9700, 9800, 9800 XT, X800, X850, X1600, X1900 XT, HD 2400 XT, HD 2600 PRO, HD 2600 XT, HD 3870
- ATI Mobility Radeon 9600, 9700, 9800, X1600
- NVIDIA GeForce 6600, 6800 Ultra DDL, 6800 GT DDL, 7300, 7600, 7800 GT, 7800 Ultra, 8600M GT, 8800 GT, 9400M, 9600M
- NVIDIA Quadro FX 4500, 5600

For best performance, a graphics card with a minimum of 256MB video memory is recommended.

The following graphics cards are not supported:

- NVIDIA GeForce FX Go 5200
- NVIDIA GeForce FX 5200 Ultra
- Intel GMA 950, X3100
- ATI Radeon 8500, 9000, 9200

The “unibody” MacBook and MacBook Air models introduced in late 2008, and the white MacBook model introduced in early 2009 are supported. These models sport the NVIDIA GeForce 9400M graphics card.

The first generation of Macbook, MacBook Air, and the Mac mini are not supported due to the limited feature-set of their built-in graphics cards. These models sport the Intel GMA 950 or X3100 graphics card.

Not sure what graphics card is installed in your system?

You can determine what graphics card is installed on your system by selecting the “About this Mac” command under the Apple menu. When the system summary appears, click the “More Info...” button, which will launch the System Profiler application. Graphics cards are listed under the “Graphics/Displays” section of the System Profiler.

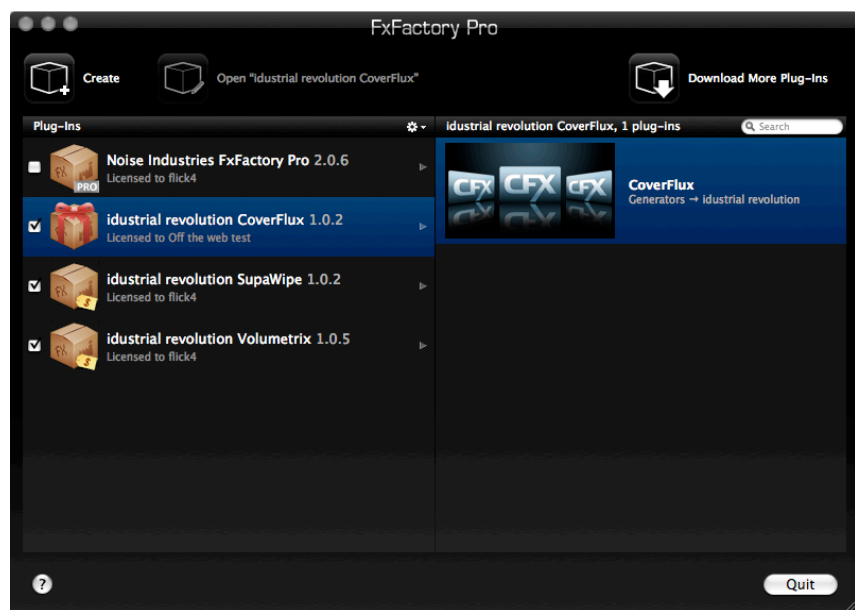




THE ITUNES-STYLE SCROLLING IMAGE GENERATOR PLUGIN FOR FINAL CUT PRO,
MOTION, FINAL CUT EXPRESS & AFTER EFFECTS

INSTALLATION

1. Check if your system meets the minimum hardware & software requirements in order to run the plugin.
2. Download [FxFactory](#) and follow the instructions included. No purchase is necessary, CoverFlux just uses the FxFactory FxPlug engine.
3. Download [CoverFlux](#) and double click to install. You should see the following FxFactory window appear with CoverFlux installed.



4. Select the CoverFlux FxPack from the list, and click Register to go through the registration process. FxFactory can then be quit. Although this plugin is free, registration will be necessary to remove the watermark.
5. For this generator to be available in FCP, FCE, Motion & After Effects, restart these applications if any of them are running. You will also have automatically installed a 15 day free trial of the best selling [Volumetrix](#) plugin and [SupaWipe](#) object wipe pack
6. Should you wish to remove the plugins & FxFactory from your system, an uninstaller can be found in the Actions menu of FxFactory.

Installation FAQ can be found here

<http://www.noiseindustries.com/support/fxfactoryfaq/index.html>

Idustrial Revolution home page

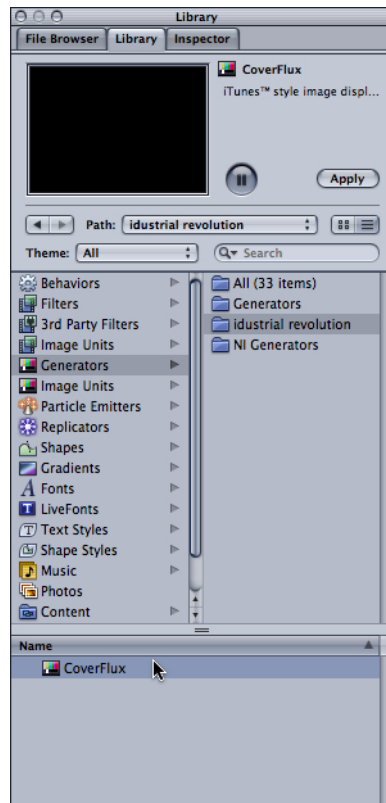
<http://www.idustrialrevolution.com>





THE ITUNES-STYLE SCROLLING IMAGE GENERATOR PLUGIN FOR FINAL CUT PRO,
MOTION, FINAL CUT EXPRESS & AFTER EFFECTS

OPERATION IN MOTION



CoverFlux can be found in the Library tab of Motion. Click on the Generators and CoverFlux will be in the industrial revolution folder.

Drag & drop the plugin onto the canvas or into a new layer in the Layers tab.

CoverFlux has to load all the images of the default folder before it will display on the canvas.

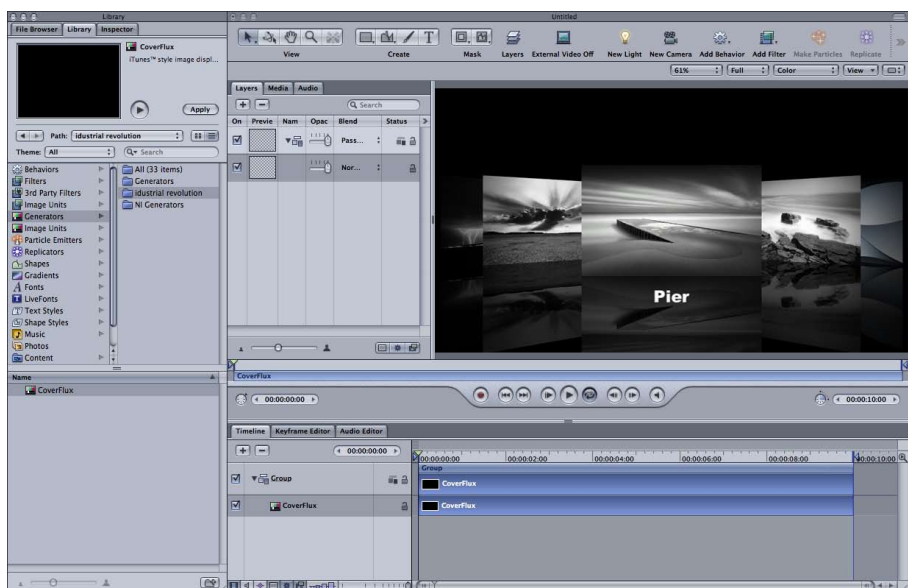
Depending on the power of your GPU and the speed of your hard disk, the plugin may take time to show.

It may take up to fifteen seconds, this is quite normal.

By default, CoverFlux will display the Black & White folder of the desktop pictures from this location:

/library/Desktop Pictures/Black & White

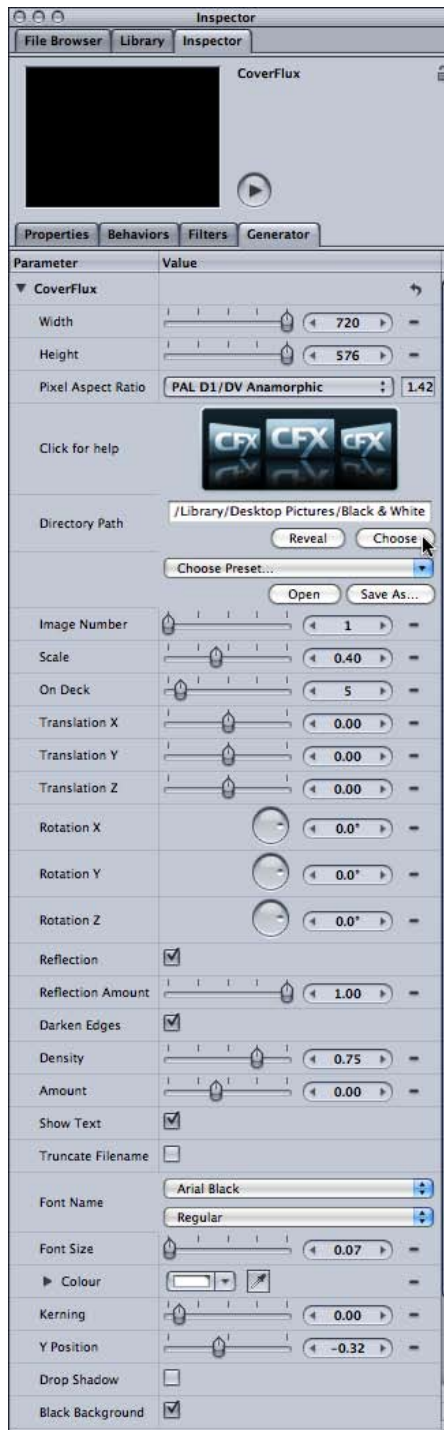
If you have deleted this standard OSX folder, please navigate to another folder using the path chooser.





THE ITUNES-STYLE SCROLLING IMAGE GENERATOR PLUGIN FOR FINAL CUT PRO,
MOTION, FINAL CUT EXPRESS & AFTER EFFECTS

OPERATION IN MOTION



The controls of CoverFlux are very flexible but easy to use. Please go to the timeline section if you want to start animating the images straight away.

To choose your own images, click the Choose button to establish the directory path to a folder.

The plugin has been limited to 25 images at any one time. This is because pointing the directory path at your iPhoto library would result in the application slowing down to an unusable level.

If you wish to add more images to the plugin after you have established the path, you will need to refresh the cache. This can be done by navigating to another folder & back, or saving, quitting and then restarting Motion.

To show you how flexible CoverFlux can be, a variety of presets are loaded. These can be used as a starting point to build your own. To save custom presets, use the Save As button. These new presets will be loaded once the application has been restarted.



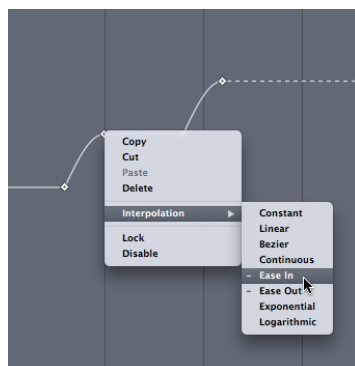
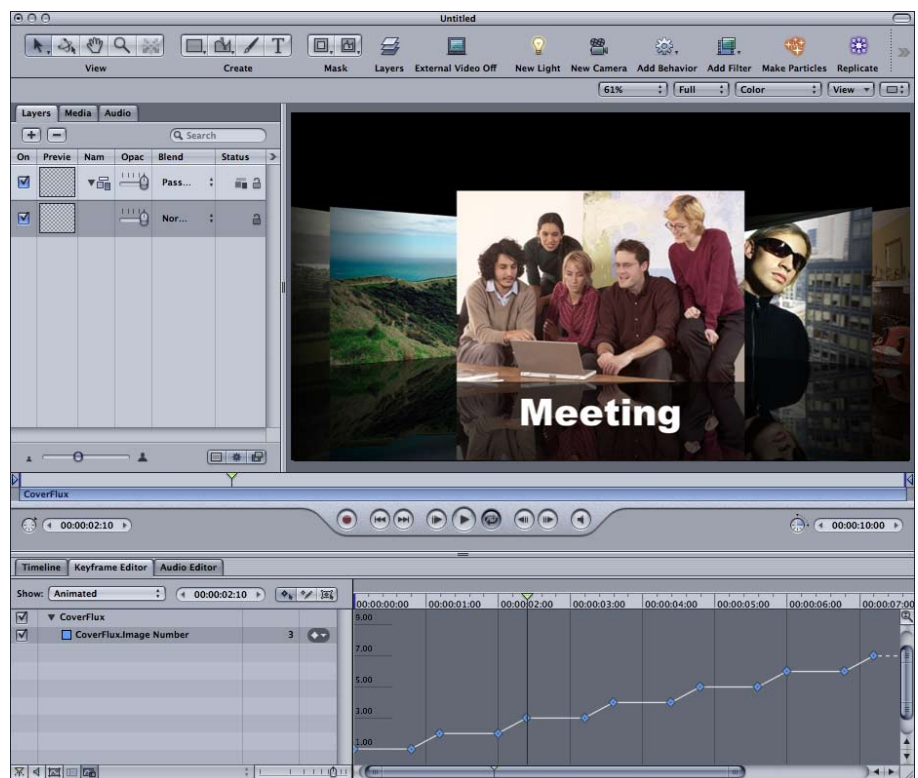


THE ITUNES-STYLE SCROLLING IMAGE GENERATOR PLUGIN FOR FINAL CUT PRO,
MOTION, FINAL CUT EXPRESS & AFTER EFFECTS

OPERATION IN MOTION

To animate the images in the CoverFlux plugin, you need to keyframe the beginning and end of the display time of each image. This can be easily done by toggling the red record button on in Motion. The time between the end of one image and the beginning of the next will be the duration of the transition between images.

Please note the keyframes at the beginning and end of the image duration.



To get a smoother animation, select all the keyframes in the Keyframe Editor and right click to apply an Ease In/Ease Out curve.

An example Motion project with the animation smoothed can be found [HERE](#).





THE ITUNES-STYLE SCROLLING IMAGE GENERATOR PLUGIN FOR FINAL CUT PRO,
MOTION, FINAL CUT EXPRESS & AFTER EFFECTS

OPERATION IN MOTION

By default, CoverFlux will display all images in alphabetical order. Should you wish to display the images with the filenames in a non-alphabetical order, there is an easy way to do so.

Simply add a three digit number to the front of the file name followed by a % sign.

Let's look at an example:

Lion.jpeg

Elephant.jpeg

Zebra.jpeg

These would be displayed as Elephant, then Lion then Zebra. However we want a different order, so rename the files with the order number and percent sign.

003%Lion.jpeg

002%Elephant.jpeg

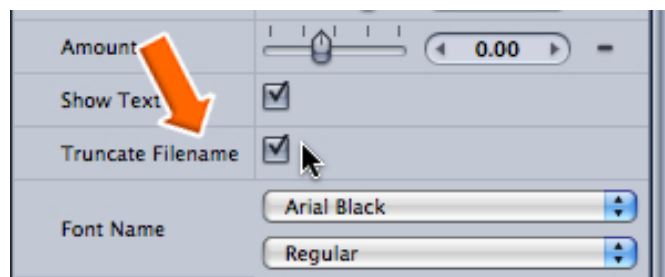
001%Zebra.jpeg

Now, select the truncate filename from the inspector or HUD, and CoverFlux will remove the number and % to display the images in the desired order:

Zebra

Elephant

Lion



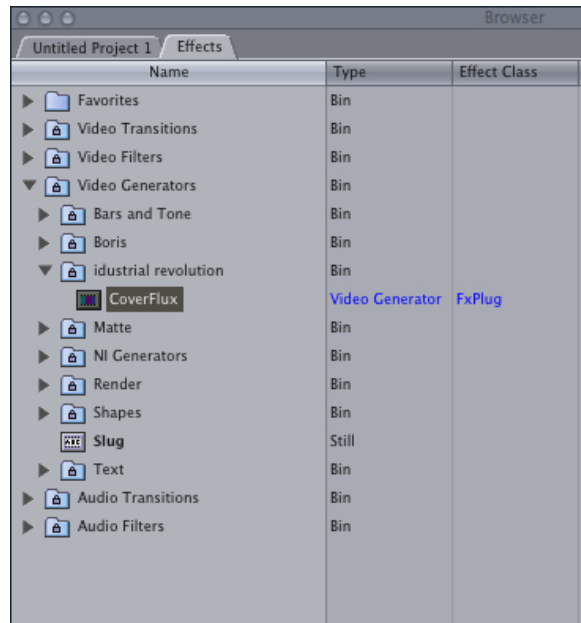
Do not enable the button without using the percent sign as this will hide all filenames!





THE ITUNES-STYLE SCROLLING IMAGE GENERATOR PLUGIN FOR FINAL CUT PRO,
MOTION, FINAL CUT EXPRESS & AFTER EFFECTS

OPERATION IN FCP/FCE



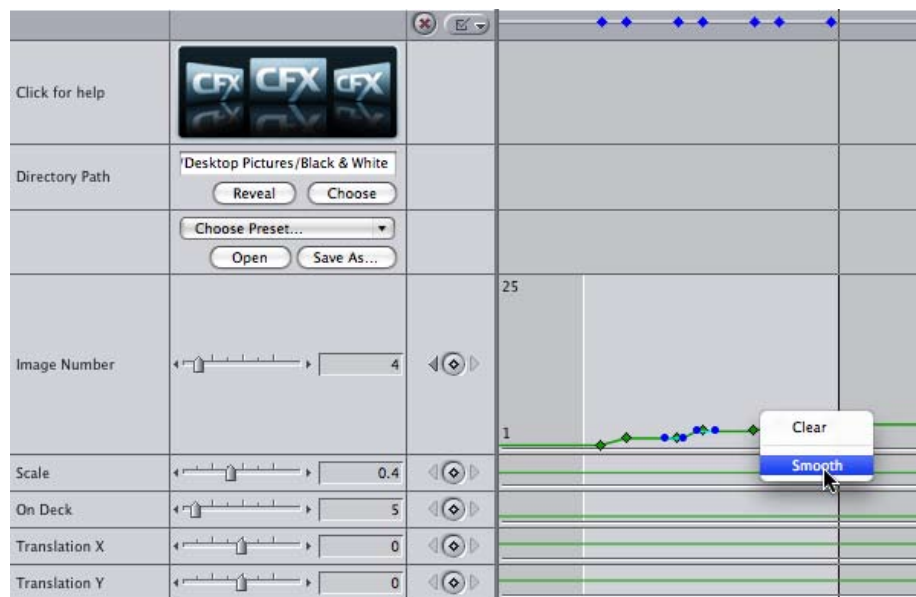
CoverFlux works in a very similar manner in both FCP & FCE4.

The plugin can be found in the industrial revolution folder in Video Generators within the Effects tab.

Drop this generator onto the timeline.

Again, depending on the speed of the machine and the size of graphics, it may take a while for the plugin to load.

CoverFlux can then be animated using keyframes just as in Motion. One difference here, instead of right clicking to Ease in/Out, select Smooth from the drop down menu when on a keyframe for the same effect.





THE ITUNES-STYLE SCROLLING IMAGE GENERATOR PLUGIN FOR FINAL CUT PRO,
MOTION, FINAL CUT EXPRESS & AFTER EFFECTS

PARAMETER LIST

Width & Height

This should be automatically set by your project or timeline resolution.

Pixel Aspect Ratio

This should be automatically set by your project or timeline aspect ratio.

Directory Path

Shows the current folder of images in use.

Reveal/Choose

Reveals the current folder in the finder/Choose a new folder of images.

Choose Preset

Select a preset from the built in or user saved presets.

Open/Save As

Open a preset/Save a custom preset.

Image Number

Changes the image forefront in the composition. This is the main control for animating the change of images within the plugin.

Scale

Globally alters the size of the images in the composition.

On Deck

Set the amount of preview & viewed images that accompany the main image on deck.

Translation X Y Z

Moves the composition XYZ in 3D.

Rotation X Y Z

Rotates the composition XYZ in 3D.

Reflection

Toggles the reflection on/off for all images.

Reflection Amount

Varies the density of the reflection for all images.

Reflection Offset

Varies the distance of the reflection for all images.

Darken Edges

Shades the left and right hand side of the composition to add depth & focus on main image.

Density

Adjusts the density of the shading.

Amount

Adjusts the amount of shading into the composition.





THE ITUNES-STYLE SCROLLING IMAGE GENERATOR PLUGIN FOR FINAL CUT PRO,
MOTION, FINAL CUT EXPRESS & AFTER EFFECTS

PARAMETER LIST CONTD.

Show Text

Enables the display of the filename in the composition.

Truncate Filename

Removes everything placed before a '%' in the filename so images can be displayed in an non alphabetical manner.

Font Name

Select a font & style from these drop down menus. This parameter does not show in the HUD.

Font Size

Selects the size of font used in the display of the filename.

Colour

Eyedropper or full RBGA selection of font colour.

Kerning

Adjusts the spacing between characters.

Y Position

Adjusts the filename position on the Y axis.

Drop Shadow

Toggle the drop shadow on/off.

Shadow Radius

Softness of drop shadow of text.

Shadow Density

Adjusts the drop shadow strength.

Shadow Colour

Eyedropper or full RBGA selection of drop shadow colour.

Offset X/Y

Adjusts the distance the drop shadow starts from the original text.

Black Background

Normally selected, this will render black into the background. For the CoverFlux effect to be composited onto another image in another program, leave this off and render out using the Animation+ codec.





THE ITUNES-STYLE SCROLLING IMAGE GENERATOR PLUGIN FOR FINAL CUT PRO, MOTION, FINAL CUT EXPRESS & AFTER EFFECTS

OTHER INDUSTRIAL REVOLUTION PLUGINS & MOTION TEMPLATES



VOLUMETRIX

Produces stunning light effects and transitions by unleashing the power of the graphics card and FxPlug technology. Effects that would take many hours of keyframing and then rendering are now available to use within seconds on both Final Cut Pro and Motion. This power is not just limited to making boring text look like a Hollywood trailer, any image that has an alpha can be transformed using a couple of mouse clicks.



SUPAWIPE

SupaWipe produces unique object transitions without keyframing in FCP & FCE. Give your productions a professional gloss & style with amazing fresh wipes. Effects that would normally take time, keying & multiple layers are now just a few mouse clicks away. As well as the wipe, two object images can be onscreen at once. Both can be scaled, rotated and offset independently or together to give huge creative potential.



From HD to DV SupaWipe renders in seconds using FxPlug technology. Trim, extend or roll SupaWipe like any other transition. Let SupaWipe do the hard work of calculating offsets for graphics that start & finish offscreen. Build and store your own custom object transitions, share presets or just use the HD compatible examples provided.



FREEBIE PACK 1

Four free, useful and fun filters/generators that add great functionality to Apple's Motion, Final Cut Pro. & Final Cut Express4.



INDUSTRIAL REVOLUTION

Templates, elements, plugins & tutorials for Final Cut Pro, Final Cut Express and Motion.



Screengrabs by Snapz Pro X

Final Cut Pro, Final Cut Express, iTunes, iPhoto & Cover Flow are trademarks of Apple Inc.
Copyright industrial revolution © 2008