

## Version: 2.5.6

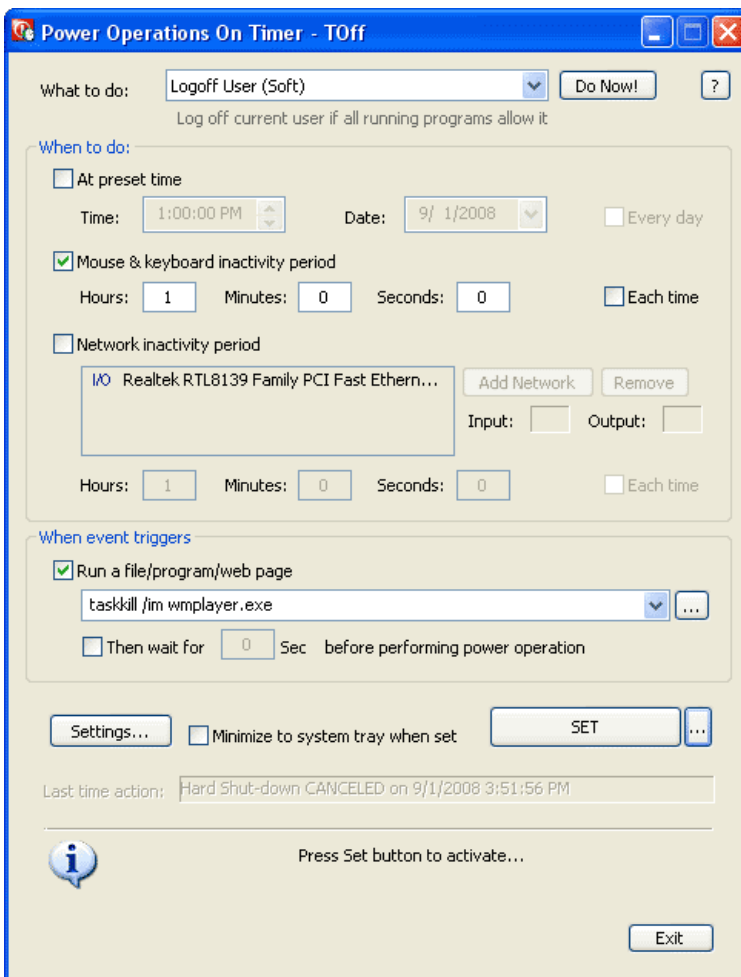
(If your version is lower than that you can download an update [here...](#))

**INFORMATION:** This is the offline version of the documentation. Check the current version of the online documentation [here](#).

TOff began as a very simple program that was basically designed to perform a power operation at a predetermined time. Now it also has some other useful features, such as computer inactivity timers (mouse & keyboard, and/or CPU usage), and the network inactivity timer to trigger power operations. The program can be also set to run every day or each time user logs on. Back in the day, I used it every time when I left my computer at the office to download some stuff from the Internet and then to turn it off at night so that it looked as if nothing happened in the morning.

Here is how it works:

- Run TOff.exe. You will see this window:



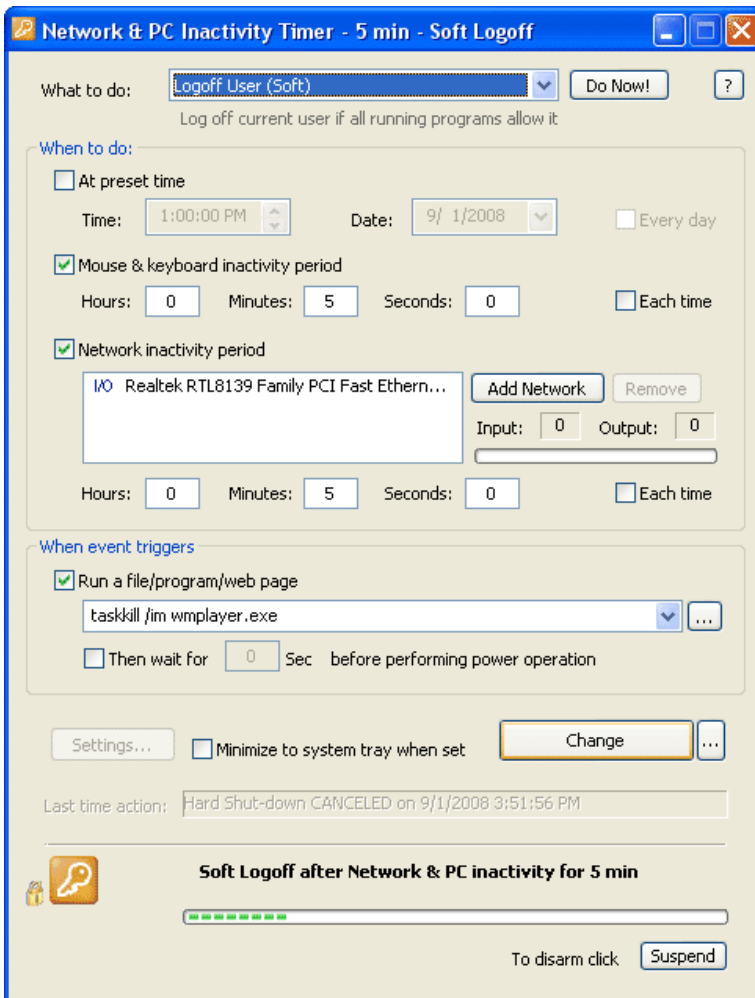
TOff in the set-up mode.

- When TOff starts it sets its controls for the previously used power operation set for one hour ahead of the current time.
- Now you can set up TOff to perform the following power operations:
  - Turn Off Computer (Soft) - Shuts down your computer only if all other running programs allow it, i.e. "clean

shut-down".

- **Turn Off Computer (Hard)** - Shuts down your computer unconditionally. Terminates all running applications (MAY CAUSE LOSS OF DATA!)
  - **Hibernate Computer (Soft)** - Hibernates your computer (i.e., saves the state of all programs running and shuts down) only if all running programs allow it.
  - **Hibernate Computer (Hard)** - Hibernates your computer unconditionally. Since it is hibernation programs are not closed.
  - **Send into Stand-by Mode** - Sends your computer into Stand-by mode - the low power consumption mode - while keeping wake events enabled.
  - **Reboot Computer (Soft)** - Reboot your computer only if all other running programs allow it.
  - **Reboot Computer (Hard)** - Reboot your computer unconditionally. Terminates all running applications (MAY CAUSE LOSS OF DATA!)
  - **Logoff User (Soft)** - Logs off current user only if all other running programs allow it.
  - **Logoff User (Hard)** - Logs off current user unconditionally. Terminates all running applications (MAY CAUSE LOSS OF DATA!)
- If you need to perform the above operation immediately without timers, simply click "Do Now!" button. (INFORMATION: Even though almost all of these operations are available via Windows Start button, "Turn Off Computer" option, and HARD Hibernation are different than the ones there. Windows is using Soft Hibernation.)
- Set when to perform the above operation:
- **At preset time** - Select time and day when to perform the operation. INFORMATION: Specify date and time in the local time format;
  - **Mouse & keyboard inactivity period** - Set how much time you allow your computer to be inactive before performing power operation. Computer activity is considered as keyboard and mouse activity. (INFORMATION: This option can be configured in the Settings, Page 2, "Computer Inactivity Timer" section.) (INFORMATION: This option can be used together with the "Network Inactivity period". In this case the inactivity timer will be reset in either of two cases: computer activity as described above, or network activity as described below.) (INFORMATION: This option is supported for the Windows 2000/XP/2003/Vista/7 and later Operating Systems).
  - **CPU inactivity period** - Set how much time you allow your computer's CPU(s) usage to be below a preset value before performing power operation. (INFORMATION: This option can be configured in the Settings, Page 2, "Computer Inactivity Timer" section.) (INFORMATION: CPU usage is measured in percent and is determined on the system-wide range for all installed CPUs.) (INFORMATION: This option can be used together with the "Network Inactivity period". In this case the inactivity timer will be reset in either of two cases: CPU activity as described above, or network activity as described below.) (INFORMATION: This option is supported for the Windows 2000/XP/2003/Vista/7 and later Operating Systems).
  - **Mouse & keyboard and CPU inactivity period** - Set how much time you allow your computer to be inactive before performing power operation. Computer activity is considered as one of the following: keyboard and mouse activity, or CPU(s) usage being above a preset value. (INFORMATION: This option can be configured in the Settings, Page 2, "Computer Inactivity Timer" section.) (INFORMATION: CPU usage is measured in percent and is determined on the system-wide range for all installed CPUs.) (INFORMATION: This option can be used together with the "Network Inactivity period". In this case the inactivity timer will be reset in either of two cases: computer or CPU activity as described above, or network activity as described below.) (INFORMATION: This option is supported for the Windows 2000/XP/2003/Vista/7 and later Operating Systems).
  - **Network inactivity period** - Set how much time you allow your network adapter(s) to be inactive before performing power operation. Before activating this timer you must select Network Adapter(s) to monitor network activity on, if one is not selected by default. After clicking "Add Network" button you will see a pop-up window that has a list of all available network adapters. That window also allows to specify the traffic direction to monitor activity on. Check one or two of the following boxes: "Monitor input activity", "Monitor output activity" before clicking "Add" button. When adapter is added you will see its name and specified traffic direction to monitor activity on in the main window of TOff. A small progress bar on the right will show the activity network stats for all network adapters in the list. To remove a network adapter from the list in the main window of TOff select it first and click "Remove" button. (INFORMATION: Network activity is considered as number of packets sent and/or received by the network adapter. TOff will reset the network inactivity timer if a number of packets peaks at or over a specified value. By default this value is set to 3, but you can change it in the Settings -> Page 2 window, or via a command line call. If more than one network adapter is selected to monitor network inactivity, TOff will use the bigger packet number for the activity count.) (INFORMATION: This option is supported for the Windows 98/NT 4.0 or later Operating Systems).
  - If you want the operation to be performed "Every day" at Preset Time, or "Each time" current user logs on, check the appropriate box. (INFORMATION: By enabling these options you allow TOff to write itself into Windows Autostart Registry key, which will run TOff each time you re-boot your computer or when current user logs on. To disable this feature simply Set TOff with this option checked off.)

- To run a program, open a document, or a web page right before specified power event triggers, select the "Run a file/program/web page" box. It will allow you to specify a file path or a URL link for the document of interest. In case of the file being on your local computer use the "..." button on the right to select it from the Open File window to reduce a possibility of a typo. In case of a web page, precede it's URL with the http:// or other web resource denominator.  
(INFORMATION: By default TOff will wait for the specified file and/or document to initialize before continuing on. You can change this in the Settings -> Page 1 window.);
  - In case you specify a document or a file to run, you can also make TOff wait before performing power operation. To do so, check the "Then wait for" box first, and then specify number of seconds to wait. During this time TOff will simply wait before performing specified power operation;
- To change common settings for the TOff, click the "Settings" button.  
(INFORMATION: You can change settings only before you activate TOff);
- If you would like to minimize TOff to the system tray right after it is set, check "Minimize to system tray when set" box.  
(INFORMATION: System tray is the area next to the Windows system clock in the lower right corner of the screen. By minimizing TOff to the system tray you save space on the screen.)
- Click "Set" button to activate, or "Change" button to change already activated state.  
(**IMPORTANT:** Only after you click Set/Change button your settings for TOff will take effect!)  
(**INFORMATION:** To prevent unexpected operations and dead-locking some low timer settings are not allowed.)
- You will see TOff window change (see below), which will signify that TOff is triggered and ready to perform selected operations:  
(INFORMATION: In case you selected to minimize TOff to the system tray the following window will not be visible.)



TOff in the triggered (activated) mode.

Now simply let TOff run, or minimize it to go away from the desktop.

(**IMPORTANT:** If specified in the Settings window, closing of the TOff main window will minimize it to the system tray.)

If inactivity timer is selected and TOff window is visible you will see a narrow progress bar at the bottom of the TOff window that will grow with inactivity. When that bar grows up to 100% the selected operation will be triggered.

**INFORMATION:** Screen activity as well as plugging in or activity on USB devices (including insertion and removal of Jump Drives and Flash Memory Cards) are not considered as "activity" and they will not reset inactivity timer. In this case you may consider using CPU inactivity period.

In case you decide to change any of the operation parameters (timer type, day, time, or operation type) you can do so in the main TOff window. After that remember to click "Change" button to apply changes. The information about operation will change at the bottom of the TOff window.

**IMPORTANT:** Changing TOff controls without clicking "Change" button will not reset it for an altered operation!

**INFORMATION:** To prevent unexpected operations and dead-locking some low timer settings are not allowed.

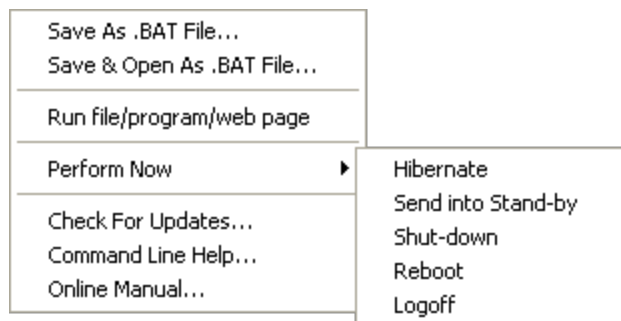
To disarm TOff hit "Suspend" button in the bottom right corner, or select Suspend or Exit from the system tray icon. If you Suspend TOff the timer will be stopped and you will be able to change its controls and reset later on.

The next time you start TOff you will see the results of the previous operation in the "Last time action" line:

- In case operation succeeded, you will see a message like this, "Soft hibernation occurred on 01/14/2004, 21:25", which tells you the exact time the shut-down took place. This way you might be sure that your computer was off at that time.
- In case operation failed, a message like this one will be displayed, "Soft hibernation ERROR on 01/14/2004, 21:25", and the icon in the bottom left corner will show an error icon. This is a sign that operation failed and your computer probably stayed on.
- In case you canceled the operation when TOff was triggered you will see a message like this, "Soft hibernation CANCELED on 01/14/2004, 21:25", and the icon in the bottom left corner will show information icon;
- In case Soft Hibernation was selected and TOff was not able to hibernate computer as one or more of running programs did not allow it, you will see a message like this, "Soft hibernation NOT ALLOWED on 01/14/2004, 21:25", and the icon in the bottom left corner will show information icon.

### Additional Menu Options

TOff provides additional options via a pop-up menu. To activate this menu click the "..." button located to the right off of the Set/Change button. You should see a menu of additional options that may look like this:



- "Save As .BAT File" - Opens up a window that lets you pick location on your hard drive to save the current selection of controls in the TOff main window into a batch (BAT) file. This could be useful in case you need to run TOff with the same settings again. To do so, one needs to simply run the resulting BAT file from the Windows Explorer, or any other program.

**INFORMATION:** Running a batch file while another instance of TOff is on will have no effect.

**INFORMATION:** When saved each BAT file contains additional non-executable Command Line Helper information attached to the bottom to facilitate editing of the command line at the top. Each line of the BAT file that starts with REM is a non-executable line that can be omitted.

- **"Save & Open As .BAT File"** - Opens up a window that lets you pick location on your hard drive to save the current selection of controls in the TOff main window into a batch (BAT) file, and later open this file in a Notepad to allow user editing. This could be useful in case you need to run TOff with the same settings again. To do so, one needs to simply run the resulting BAT file from the Windows Explorer, or any other program.

**INFORMATION:** Running a batch file while another instance of TOff is on will have no effect.

**INFORMATION:** When saved each BAT file contains additional non-executable Command Line Helper information attached to the bottom to facilitate editing of the command line at the top. Each line of the BAT file that starts with REM is a non-executable line that can be omitted.

- **"Run file/program/web page"** - Will attempt to run a program, open a file, or a web page specified to run when event triggers;

**INFORMATION:** This option may be useful to test scheduled event before it is triggered.

- **"Perform Now"** - pop-up menu allows to perform the following power operations:

- **"Hibernate"** - will hibernate system immediately;

**INFORMATION:** This option will issue a user warning before performing a power operation.

- **"Send into Stand-by"** - will send system into the Stand-by mode (or Sleep mode in case of Windows Vista) immediately;

**INFORMATION:** This option will issue a user warning before performing a power operation.

- **"Shut-down"** - will shut-down system immediately;

**INFORMATION:** This option will issue a user warning before performing a power operation.

- **"Reboot"** - will reboot system immediately;

**INFORMATION:** This option will issue a user warning before performing a power operation.

- **"Logoff"** - will log off current user immediately;

**INFORMATION:** This option will issue a user warning before performing a power operation.

- **"Check For Updates"** - opens up our web site that will let you see if an update is available for your version of TOff;

**INFORMATION:** Internet connection if required for this option to work properly.

- **"Command Line Help"** - opens up a window with a brief description of command line parameters. A more complete manual of command line parameters is provided below.

- **"Online Manual"** - opens up the latest version of this manual in your web browser.

**INFORMATION:** Internet connection if required for this option to work properly.

## **Settings Window**

Click "Settings" to access the TOff settings. These settings will be remembered for later use. The following are available:

- **Page 1**
  - **Multi-user safe mode (Windows XP, or later OS)** - To run TOff in a Multi-user Safe Mode, check this box. When activated in this mode TOff makes sure that scheduled power operation happens only when the current user is logged on. If another user is logged on at the time of the power operation TOff will show a warning.  
(Windows NT/XP: If this mode is not on the operation will be executed, which may confuse another user currently logged on to the system);  
(Windows Vista/7: This mode is always on.)
  - **Close button works as "minimize" when TOff is activated** - when checked will make TOff minimize to the system tray if user clicks the close button on its main window and TOff is activated. If unchecked, TOff will stop scheduled operation and exit;
  - **Power Operation User Warning:**

*Play sound beep warnings before scheduled power events* - when checked will play warning sound beeps before performing power operation;

- *Sound beeps N sec before performing power operation* - allows to specify how many seconds to start playing warning sound beeps before performing a power operation;
- *Warning screen N sec before performing power operation* - allows to specify how many seconds to show a warning screen before performing a power operation. (INFORMATION: A warning screen will also wake up computer's monitor to signify imminent operation.)

◦ *If Power Operation Is Overdue:* Select one of the following:

- *Perform power op if scheduled time is earlier than current time* - when checked will perform a power operation even if current time is later than scheduled time.  
(**WARNING:** Even though this option seems like a logical one be aware that it may lead to a confusing situation. Picture this - you set up a hard shut-down for 11:00 pm on Sept. 1st. For some reason you hibernate your system before that and wait until Sept. 2nd to wake it up. In this case, with this setting enabled TOff will perform hard shut-down as soon as you resume your system!);
- *Cancel power op if scheduled time is earlier than current time more than* - when checked will cancel a power operation if current time is later than scheduled time more than specified interval.  
(INFORMATION: This option should be enabled to prevent "overexposure" of the scheduled power operation. Read explanation above.)
  - *Display message box if operation is canceled or not allowed* - if checked will make TOff to display a warning message box if power operation was canceled due to the reasons explained above.

◦ *File To Run When Event Triggers:*

- *Wait for the program to initialize before continuing* - when a file and/or program is run before performing a power operation, this option will enable TOff to wait for the document and/or program to initialize before continuing.  
(INFORMATION: Initialization times vary for every program and/or document. Initialization is normally considered complete when a document and/or program is displayed on the screen. Refer to the DDE initialization for more information about programs.)
- *Show error and pause in case cannot run a program or open a file* - when a file and/or program specified to run before a power operation cannot be found and/or run, this option will make TOff to show a warning message and pause for the user input before continuing on.  
(INFORMATION: Select this option if results of running a file have a priority over performing a power operation.)

• Page 2

◦ *Computer Inactivity Timer:*

- *Consider activity as:* - specifies how TOff should interpret computer activity. The following options are available:
  - *Mouse & Keyboard Activity* - Keyboard strokes & mouse clicks and moves will be considered as activity;
  - *CPU usage* - The overall system-wide CPU usage will be considered as activity;  
(INFORMATION: In case of multiple CPU systems, TOff will use cumulative CPU usage for all processors.)
  - *Mouse & Keyboard Activity and CPU usage* - Keyboard strokes & mouse clicks and moves, and the overall system-wide CPU usage will be considered as activity;  
(INFORMATION: In case of multiple CPU systems, TOff will use cumulative CPU usage for all processors.)
  - *Minimum CPU usage to qualify as activity:* - For the CPU usage option, allows to specify the minimum CPU usage value (in percent) to consider as activity.

- *Network Inactivity Timer:*
  - *When Network Adapter Is Disconnected* - specifies what to do when a network adapter is disconnected, or an adapter error is encountered during a network inactivity timer waiting period:
    - *Ignore it* - do nothing and continue monitoring remaining network adapters;
    - *Interpret as activity* - disconnection will be interpreted as network activity once (by resetting the inactivity timer);
    - *Show warning & stop* - TOff will show a warning message and stop the timer.
  - *Minimum number of packets to qualify as activity:* - allows to set a minimum number of packets to qualify as network activity.
- *Log File:* Contains controls to enable and set up a Log File that may be used to track diagnostic information to facilitate debugging:
  - *Enable logging of diagnostic events into a log file* - when checked enables TOff to record technical information into a Log File during the operation. This log file will facilitate debugging of a possible issue with the software;  
 (INFORMATION: The maximum length of the Log File is 1000 lines. If the Log File grows larger than that it will be automatically trimmed with the older records removed.)  
 (INFORMATION: Our support team staff may request you to enable this option to diagnose a possible problem with the software.)  
 (INFORMATION: TOff does not collect any of your personal information in the Log File.)
  - *File* - field allows you to specify a path for the Log File;  
 (INFORMATION: Please use the "..." button on the right to specify path for the Log File.)  
 (INFORMATION: It is recommended not to use removable media for the Log File location to prevent lagging.)
  - *"..."* - button brings up the Browse For Folder dialog window that allows you to select a folder to place the Log File;  
 (INFORMATION: It is recommended not to use removable media, or remote computers for the Log File location to prevent lagging.)
  - *">"* - button opens the Log File in the default text viewer.  
 (INFORMATION: To save the contents of the Log File for later viewing or after a request from our support team, click File and then Save As, if opened through the Notepad. Specify a location in My Documents or on your Desktop and click Save. After that you will be able to attach it to your email response or open it for viewing.)

### Run TOff from Command Line

TOff can be run from a Windows command line using the follow syntax:

```
toff /run [/systray] todo=[sh|ss|hh|hs|sb|rs|rh|ls|lh] type=[pt|ip|nip|pcnip]
[dt=[%f][+%d]] [tm=[%t][+[%h:[%m:[%s]]]]] [wait=[%h:[%m:[%s]]]] [ntwk=[%s]] [runfile=%s]
[thenwait=%s]] [/runfilewait] [/eachtime|everyday] [/musm] [/silent]
[donow=[sh|ss|hh|hs|sb|rs|rh|ls|lh]] [/closeall] [/pcactivity] [/cpuactivity]
[/pccpuactivity] [cpuusage=%p] [nitd=[i|ia|sw]] [nitmnp=%n]
```

where the following parameters are accepted:

- /run - Should be specified to run TOff from command line;
- /systray - Instructs to minimize TOff window to the system tray;
- todo - Operation to perform. One of the following is accepted: sh = Shut-Down (Hard); ss = Shut-Down (Soft); hh = Hibernate (Hard); hs = Hibernate (Soft); sb = Send into Stand-by Mode; rs = Reboot (Soft); rh = Reboot (Hard); ls = Logoff (Soft); lh = Logoff (Hard). If nothing is specified, Stand-by is used instead;
- type - Type of timer to use. One of the following is accepted: pt = Preset Timer ('tm' and 'dt' parameters will be used); ip = PC/CPU Inactivity Period ('wait' will be used); nip = Network



Inactivity Period ('wait' will be used); pcnip = PC/CPU and Network Inactivity Period ('wait' will be used). If nothing specified, Preset Timer is used instead;

- `dt` - Sets the date to perform operation in 'todo'. Valid only if 'type' is set to 'pt'. In "%f" format it sets static date, where %f = date in local format (Example: "12/25/2008" for US format). In "+%d" format sets date relative to today's date. (Example: "+1" will set the date of tomorrow.) If this parameter is not specified today's date is used instead. If today's date coupled with time makes the past time, tomorrow's date is used instead;
- `tm` - Sets the time to perform operation in 'todo'. Valid only if 'type' is set to 'pt'. In "%t" format it sets static time, where %t = time in local format (Example: "12:00 pm" for US format). In "+%h:%m:%s" format it sets time relative to the current time. If only two values are used, first one is interpreted as minutes and second one as seconds. In case of only one value it is interpreted as relative number of seconds. (Example: "tm=+1:30", will set time 1 minute and 30 seconds ahead of current time.) If this parameter is not specified the current time plus 1 hour is used instead. The minimum difference between requested and current time could not be less than 3 minutes;
- `wait` - Sets time interval for the period of inactivity before performing operation in 'todo'. Valid only if 'type' is set to 'ip', 'nip', or 'pcnip'. %h = Number of hours; %m = Number of minutes; %s = Number of seconds. If this parameter is not specified 20 minutes is used instead;
- `ntwk` - Used only if 'type' is set to 'nip', or 'pcnip' in the following format:  
NetworkName1=[i|o|io][, NetworkName2=[i|o|io]][, ...], where NetworkNameN = Full or partial name of network adapter; i = Monitor input packets only; o = Monitor output packets only; io = Monitor input & output packets (also used by default). Specifies which network adapter(s) to use for monitoring inactivity. If this parameter is not specified, the first active network adapter is used for input & output packets;
- `runfile` - Sets a file/program path, or a website link to open when event triggers. %s - can be either a relative or a full path to the file, or precede it with http:// to open a web page;
- `/runfilewait` - Used only if 'runfile' is specified. Makes TOff wait for the specified program and/or document to initialize before continuing;
- `thenwait` - Used only if 'runfile' is specified. %s = Number of seconds to wait after event triggers and before performing power operation;
- `/eachtime` - Makes TOff to start with Windows each time the system is rebooted and activate itself (use with caution!!!). If this parameter is not specified TOff removes itself from Windows Autostart;
- `/everyday` - The same as 'eachtime' parameter;
- `/musm` - Multi-User Safe Mode, if enabled won't allow the scheduled operation to be performed if another user is logged on at the time;
- `/silent` - Makes TOff to omit sound warning beeps before performing power operation;
- `donow` - Performs power operation immediately. %s = could be: sh = Shut-Down (Hard); ss = Shut-Down (Soft); hh = Hibernate (Hard); hs = Hibernate (Soft); sb = Send into Stand-by; rs = Reboot (Soft); rh = Reboot (Hard); ls = Logoff (Soft); lh = Logoff (Hard). No other parameters are used;
- `/closeall` - Close all running instances of TOff. No other parameters are used;
- `/pcactivity` - Use keyboard & mouse activity as the computer inactivity (if 'type' is set to 'ip' or 'pcnip');
- `/cpuactivity` - Use CPU system usage as the computer inactivity (if 'type' is set to 'ip' or 'pcnip');
- `/pccpuactivity` - Use keyboard & mouse and CPU system usage as the computer inactivity (if



'type' is set to 'ip' or 'pcnip');

- `cpuusage` - Minimum percentage value of CPU usage specified in %p to qualify as computer activity;
- `nitd` - Specifies what to do when network adapter is disconnected (used if 'type' is set to 'nip' or 'pcnip'). It could be set to one of the following: `i` = Ignore; `ia` = Interpret as activity; `sw` = Show warning & stop;
- `nitmnp` - Minimum number of packets to qualify as network activity (used if 'type' is set to 'nip' or 'pcnip'). %n = Acceptable values are 1 through 999;
- `/?` - Displays information window.
- `time` - *[Deprecated]* (Supported for backward compatibility. Format: "[time=[%h:%m:%s][+[%h:%m:%s]]]") Sets the time to perform operation in 'todo'. Valid only if 'type' is set to 'pt'. In "%h:%m:%s" format it sets static time, where %h = Hour number in military format; %m = Minute; %s = Second. In "+%h:%m:%s" format it sets time relative to the current time. If only two values are used, first one is interpreted as minutes and second one as seconds. In case of only one value it is interpreted as relative number of seconds. (Example: "time=+1:30", will set time 1 minute and 30 seconds ahead of current time.) If this parameter is not specified the current time plus 1 hour is used instead. The minimum difference between requested and current time could not be less than 3 minutes;
- `date` - *[Deprecated]* (Supported for backward compatibility. Format: "[date=[%m/%d/%y][+[%d]]]") Sets the date to perform operation in 'todo'. Valid only if 'type' is set to 'pt'. In "%m/%d/%y" format it sets static date, where %m = Month number (January=1, February=2, ... December=12); %d = Day number; %y = Four-digit year number. In "+%d" format sets date relative to today's date. (Example: "+1" will set the date of tomorrow.) If this parameter is not specified today's date is used instead. If today's date coupled with time makes the past time, tomorrow's date is used instead;

**IMPORTANT:** No spaces are allowed inside values of parameters. In case you need to use spaces inside values, put them into double quotation marks (example: `tm="5:30:00 am"`). In case you need to use double quotation marks inside quotes, precede them with a backward-slash (example: `runfile="run v=\"Hello World!\""`).

**INFORMATION:** If any of the parameters specified in the command line are not valid or may present potential dead-lock of the system, TOff will block operation and will display error message.

**SAMPLE 1:** Will set TOff to send computer into Stand-by Mode after 3 hours and 20 minutes after it is run:

```
toff /run todo=sb type=pt tm="+3:20:0" /musm
```

**SAMPLE 2:** Hibernate system if no user activity for 1 hour, open Google web page before that. Make it multi-user safe:

```
toff /run /systray todo=hs type=ip /pcactivity wait="1:0:0" /musm  
runfile="http://google.com"
```

**SAMPLE 3:** Next will set TOff to turn-off computer "Hard" each day at 1 a.m. It will also minimize it to the system tray:

```
toff /run /systray /eachtime todo=sh type=pt tm="1:00 am" /musm
```

**SAMPLE 4:** Set TOff to perform "Soft" hibernation at 11 p.m. on December 1, 2006 (provided this is a future date). Also note that we used '/eachtime' parameter to ensure that TOff will remain running until that day, as otherwise this operation could be simply canceled by closing TOff during re-booting. It will also minimize TOff to the system tray to hide it off the screen:

```
toff /run /systray /eachtime todo=hs type=pt tm="23:00" dt="12/1/2006"
```

**SAMPLE 5:** Log off current user if no network activity (input only) and user activity for 2 hours on "Broadcom NetXtreme 57xx Gigabit Controller" network adapter:

```
toff /run /systray todo=ls type=pcnlp /pactivity wait="2:0:0" ntwk="Broadcom  
netxtreme=i" nitd=i nitmnp=3
```

**SUGGESTION:** We'd strongly recommend to test TOff before leaving it on its own, since due to different settings and hardware configuration some operations may not be executed correctly on your particular system!

Please read compatibility issues for different Operating Systems before running TOff:

| OS              | Operation               | Description  |
|-----------------|-------------------------|--|
| Win 98/ME       | Turn Off (Soft)         | Your computer must support Advanced Power Management feature to be powered off. (Otherwise you will see "It is safe to turn off your computer now" message instead.) Shut-down will only occur if no running programs stop it with the Save-Changes screen.  |
|                 | Turn Off (HARD)         | Your computer must support Advanced Power Management feature to be powered off. (Otherwise you will see "It is safe to turn off your computer now" message instead.) TOff will terminate all running programs unconditionally and attempt to shut-down. Some data might be lost after it!  |
|                 | Hibernation (Soft/HARD) | Your computer must support Advanced Power Management feature to be hibernated. (Otherwise you will see "It is safe to turn off your computer now" message instead.) You shall enable hibernation in the Power Options window in Control Panel to make it work.   |
|                 | Send into Stand-by      | Your computer must support Advanced Power Management feature to be sent into stand-by mode.  |
| Win 2k/XP/Vista | Turn Off (Soft)         | Your computer must support Advanced Power Management feature to be powered off. (Otherwise you will see "It is safe to turn off your computer now" message instead.) TOff will attempt to close all the programs running and will fail if any of them ask for the Save-Changes confirmation.   |
|                 | Turn Off (HARD)         | Your computer must support Advanced Power Management feature to be powered off. (Otherwise you will see "It is safe to turn off your computer now" message instead.) TOff will try to close all running programs first. If they issue the Save-Changes windows it will wait for several seconds and if no response comes it will terminate them discarding all unsaved data. |
|                 | Hibernation (Soft/HARD) | Your computer must support Advanced Power Management feature to be hibernated. (Otherwise you will see "It is safe to turn off your computer now" message instead.) You shall enable hibernation in the Power Options window in Control Panel to make it work.   |
|                 | Send into Stand-by      | Your computer must support Advanced Power Management feature to be sent into stand-by mode.  |

Due to the fact that Windows NT based Operating Systems (i.e., Windows 2000/XP/2003/Vista/7) are much more complex, TOff will run more stable there. Windows 95/98/ME might not perform all required operations at hard shut-down/rebooting/logoff thus making your system issue error messages at the start-up. Exercise caution when using TOff on Windows 95/98/ME.

**SUGGESTION:** Even though hard hibernation sounds more convenient, we'd suggest using "turn off (hard)" option to make the shut-down more reliable. We had some systems running the Windows XP deadlock going into hibernation from a screen saver.

Please let us know about any glitches that you may find in TOff, also feel free to post your comments and suggestions. Thank you for choosing TOff!

---

**New!** Check other latest software [FREE to download!](#)

**Report Errors and Glitches**  
**Send Comment/Suggestion**