

AMI UEFI BIOS Flash SOP for DOS

Document Revision: v1.3

Issue Date: 2012/03/02

Author: Heather Huang

Version	History	Release Date	Author
V1.0	1. Initial release.	2011/05/16	Nathan Chuang
V1.1	1. Add reboot action after flashing BIOS.	2012/02/03	Jade Chen
V1.2	1. Add reboot times after flashing BIOS for Victoria IVB project.	2012/02/10	Heather Huang
V1.3	1. Remove reboot times after flashing BIOS.	2012/03/02	Heather Huang

Flash UEFI BIOS SOP for DOS

1. Please make a DOS bootable device.
2. Copy BIOS folder (ex: Victoria-H61_P01-A3L folder) into DOS bootable device.
3. Boot to DOS mode and enter BIOS folder.

```

Microsoft(R) Windows 98
(C)Copyright Microsoft Corp 1981-1999.

A:\>cd BIOS

A:\BIOS>dir

Volume in drive A is AI FLASH
Volume Serial Number is 3488-32E6
Directory of A:\BIOS

.                <DIR>          05-02-11  13:56
..               <DIR>          05-02-11  13:56
AMIUEF~1 PDF      873,881  02-17-11  12:48
VICTOR~1 TXT      2,645  05-02-11  13:45
WIN              <DIR>          05-02-11  13:56
SHELL           <DIR>          05-02-11  13:56
ROM             <DIR>          05-02-11  13:56
LNX             <DIR>          05-02-11  13:56
H61_DM~1        <DIR>          05-02-11  13:56
DOS             <DIR>          05-02-11  13:56
                2 file(s)      876,526 bytes
                8 dir(s)      2,428,928 bytes free

A:\BIOS>_

```

4. Enter DOS folder again.

```

DOS             <DIR>          05-02-11  13:56
                2 file(s)      876,526 bytes
                8 dir(s)      2,428,928 bytes free

A:\BIOS>cd DOS

A:\BIOS\DOS>dir

Volume in drive A is AI FLASH
Volume Serial Number is 3488-32E6
Directory of A:\BIOS\DOS

.                <DIR>          05-02-11  13:56
..               <DIR>          05-02-11  13:56
AFUDOS  EXE      187,216  01-17-11  16:07
BIOS_DOS BAT       38  05-02-11  13:58
BIOS_ME BAT       26  05-02-11  13:58
FPARTS  TXT       2,155  02-15-11  14:53
FPT     EXE      593,524  02-01-11  13:01
FPTCFG  INI       3,487  02-01-11  12:54
FWUPDLCL EXE     467,010  02-01-11  13:01
        7 file(s)      1,253,456 bytes
        2 dir(s)      2,428,928 bytes free

A:\BIOS\DOS>_

```

5. Flash Method.

[Flash 2M BIOS]

- For end-user ONLY. Currently, ALL ODMs should NOT use it to flash SBIOS.

It will cause unexpected problem since some BIOS block data maybe different between old and new BIOS.

- It will keep DMI and setup settings.

- QTC team can simulate user's behavior by using it.

1) Execute **"BIOS_DOS.bat"** file.

```

FWUPDLCL EXE      467,010  02-01-11  13:01
ERROR     LOG      198   05-02-11  14:09
          8 file(s)    1,253,654 bytes
          2 dir(s)    1,871,872 bytes free

A:\BIOS\DOS>BIOS_DOS.bat

A:\BIOS\DOS>AFUDOS ..\ROM\XXXXXXX.ROM /p /b /n /r
Note 2
+-----+
:               AMI Firmware Update Utility(APTIO) v2.00 Note 1
:      Copyright (C)2011 American Megatrends Inc. All Rights Reserved.
+-----+
Reading file ..... done
FFS checksums ..... ok
Erasing flash ..... done
Writing flash ..... done
Verifying flash ..... done
Erasing NVRAM ..... done
Writing NVRAM ..... done
Verifying NVRAM ..... done
Erasing BootBlock ..... done
Writing BootBlock ..... done
Verifying BootBlock ... done

A:\BIOS\DOS>

```

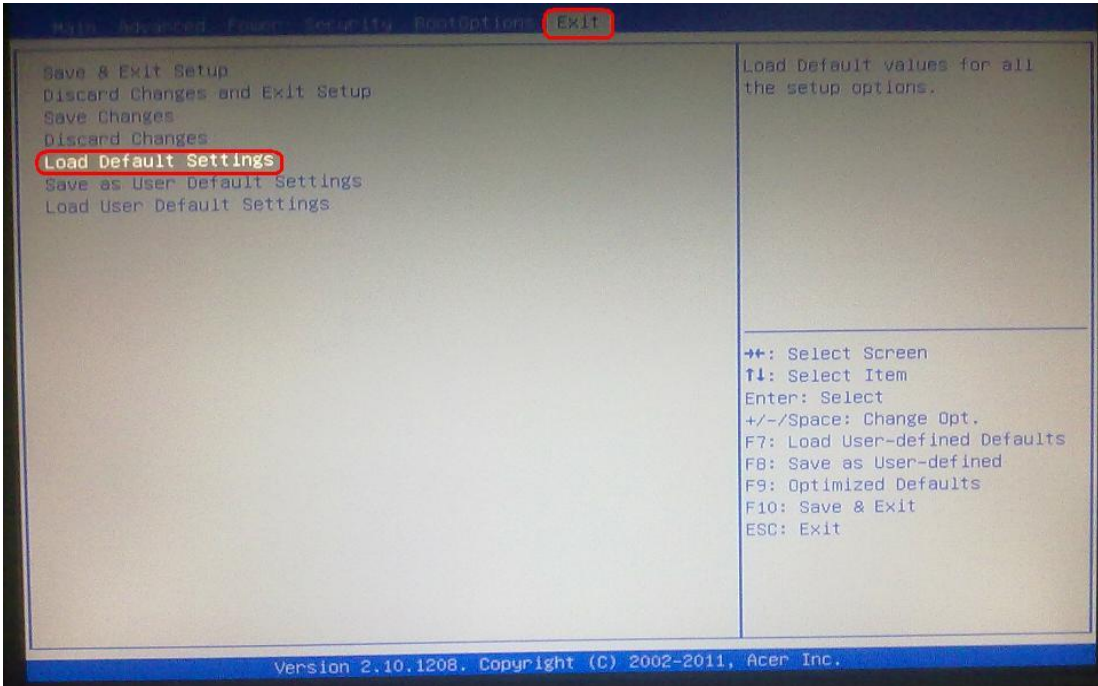
Note 1: The AFUEFI tool version is by case.

Note 2: The command is by case.

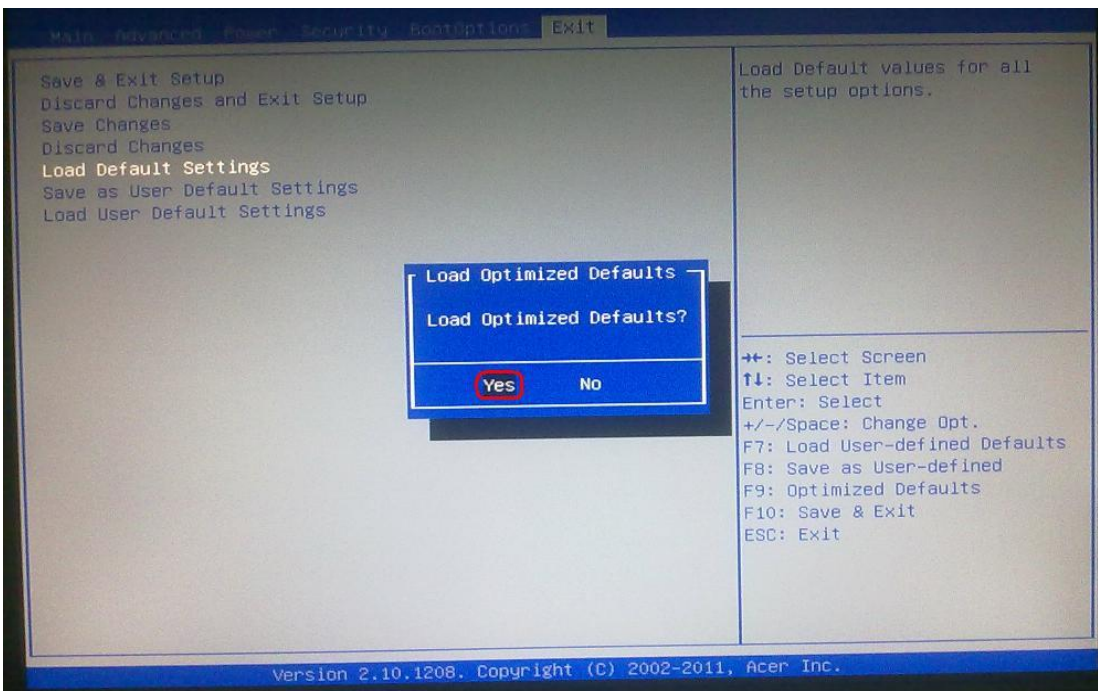
2) After finishing flashing BIOS, please don't execute any programs and reboot (**Ctrl + Alt + Del**) the system directly.

3) When system reboot, please press "Del" to enter BIOS Setup.

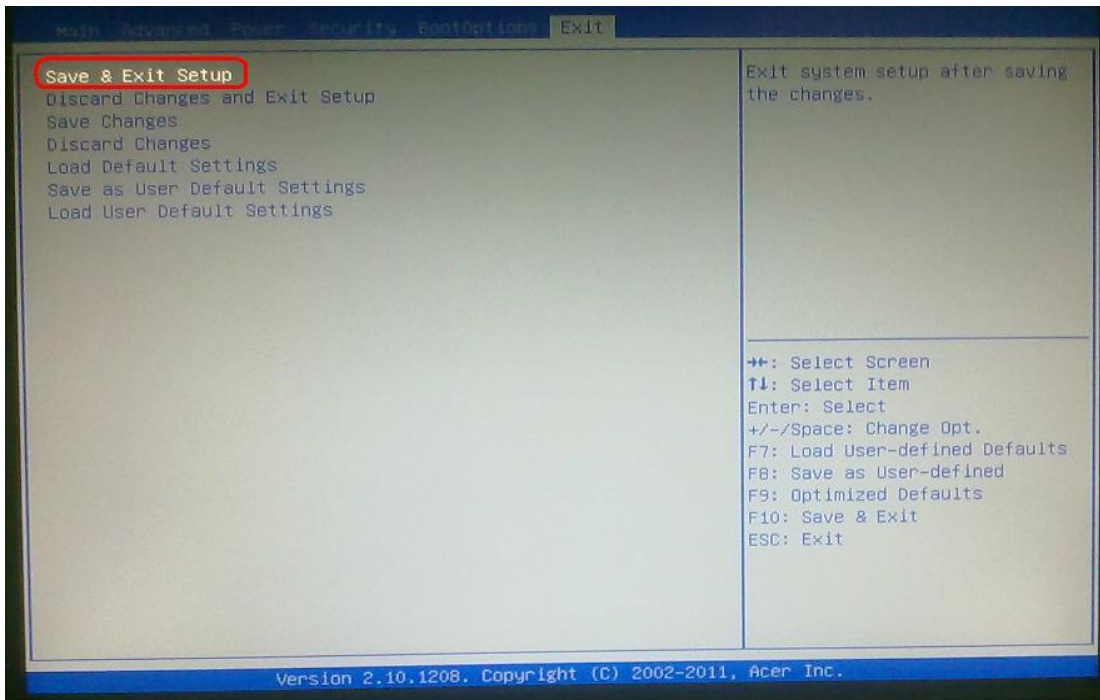
4) In Exit page, select "Load Default Settings" and press "Enter" key.



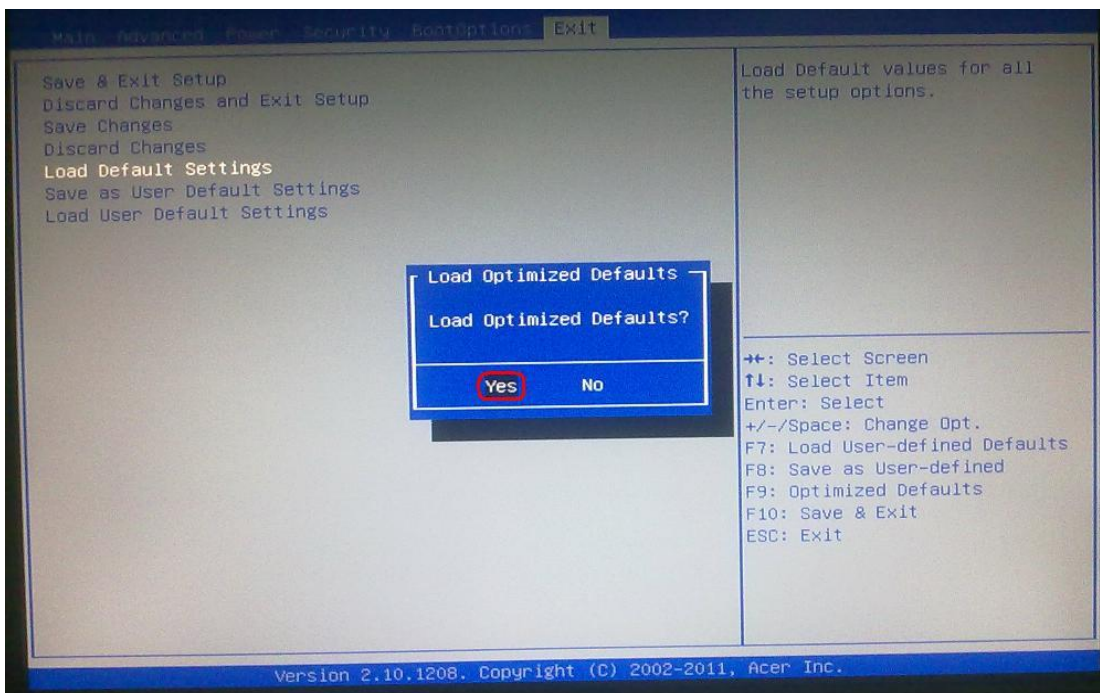
5) Select “Yes” and press “Enter” key.



6) Select "Save & Exit Setup" and press "Enter" key.



7) Select "Yes" and press "Enter" key.



8) Flash BIOS is finished.