

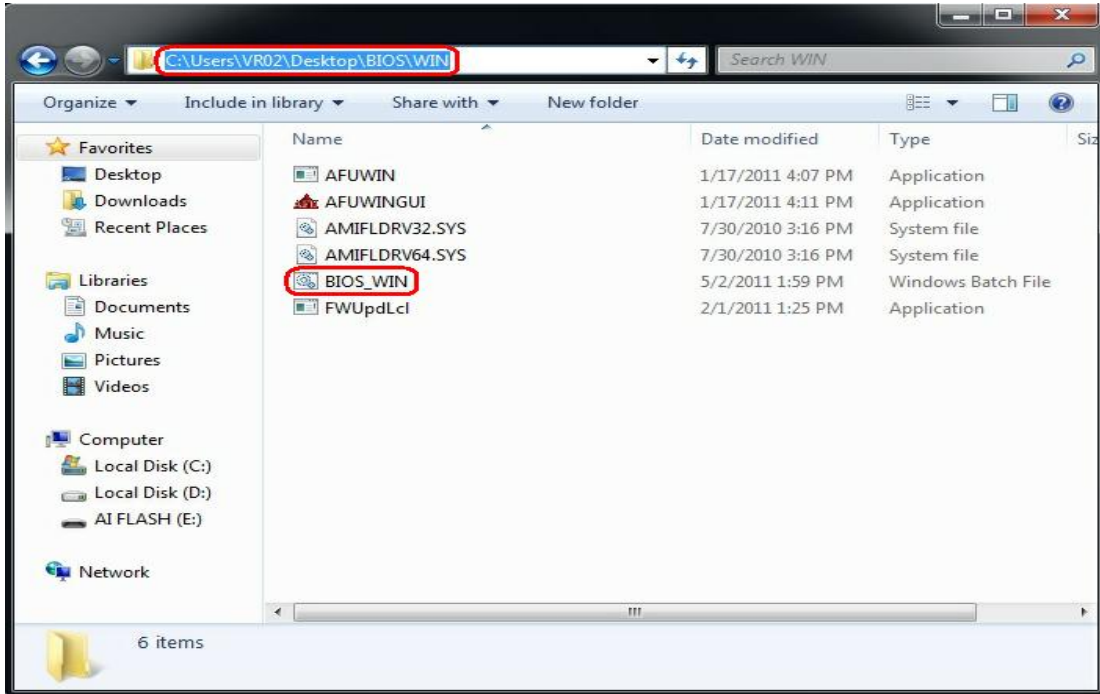
AMI UEFI BIOS Flash SOP for Windows

Document Revision: v1.0

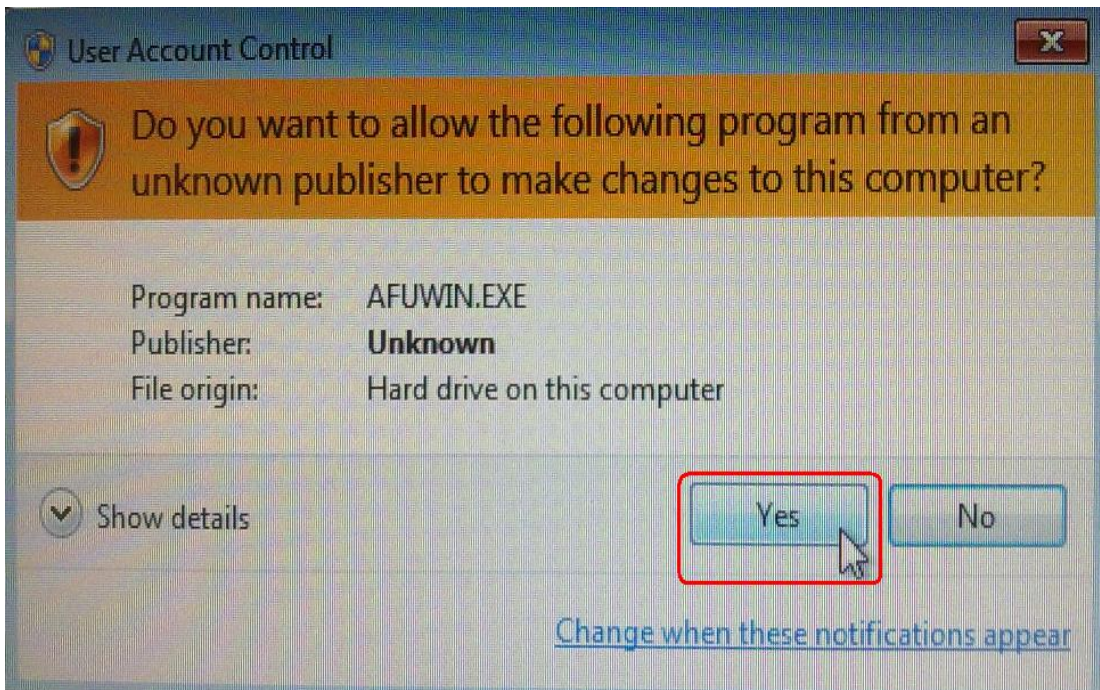
Issue Date: 2011/05/30

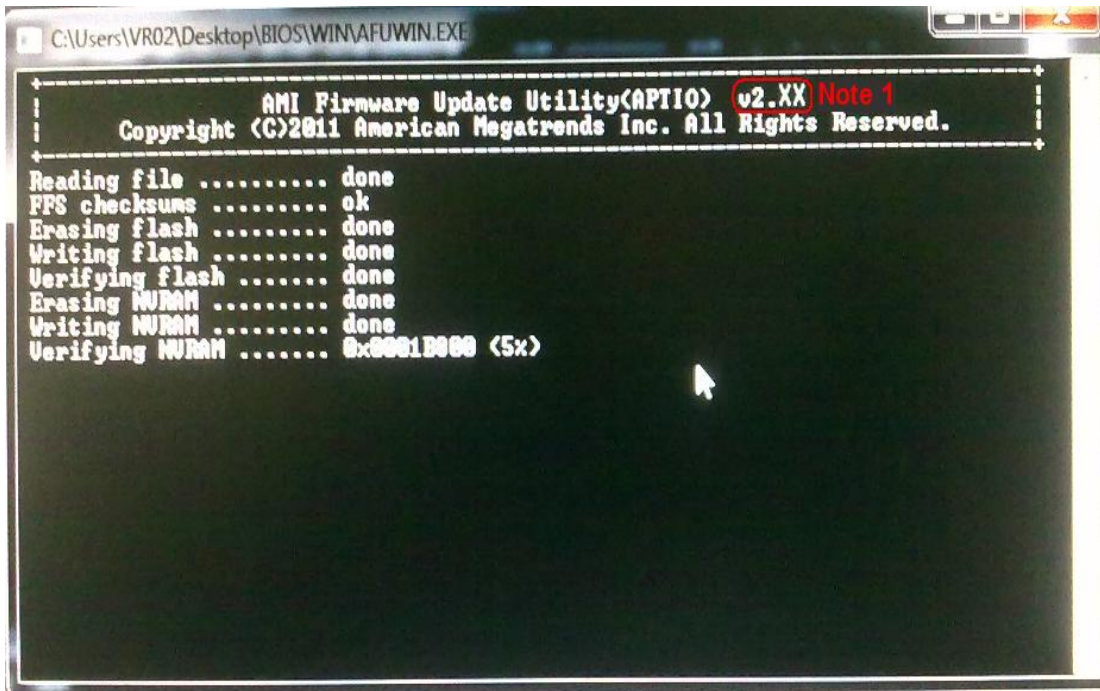
Flash BIOS SOP for Windows 7 OS

1. Copy BIOS folder (ex: Victoria-H61_P01-A3L folder) under OS Desktop.
2. In BIOS folder, select WIN folder and execute **"BIOS_WIN.bat"** file. Please make sure the AFUWIN.exe tool version is 2.36 or later.



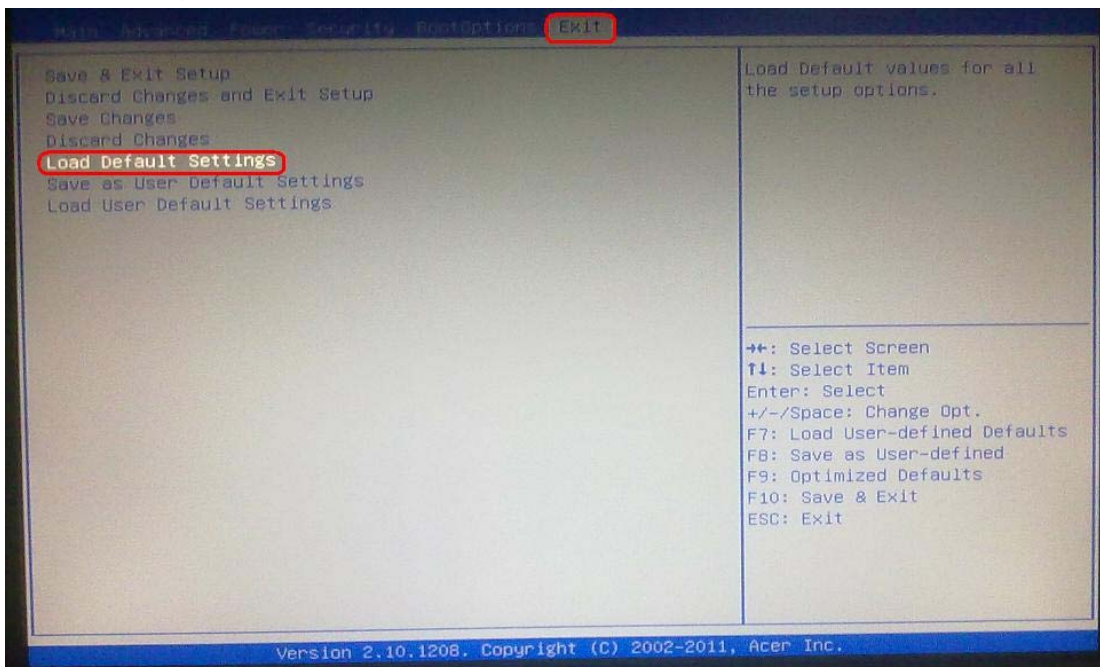
3. Press "Yes" to continue flashing BIOS.



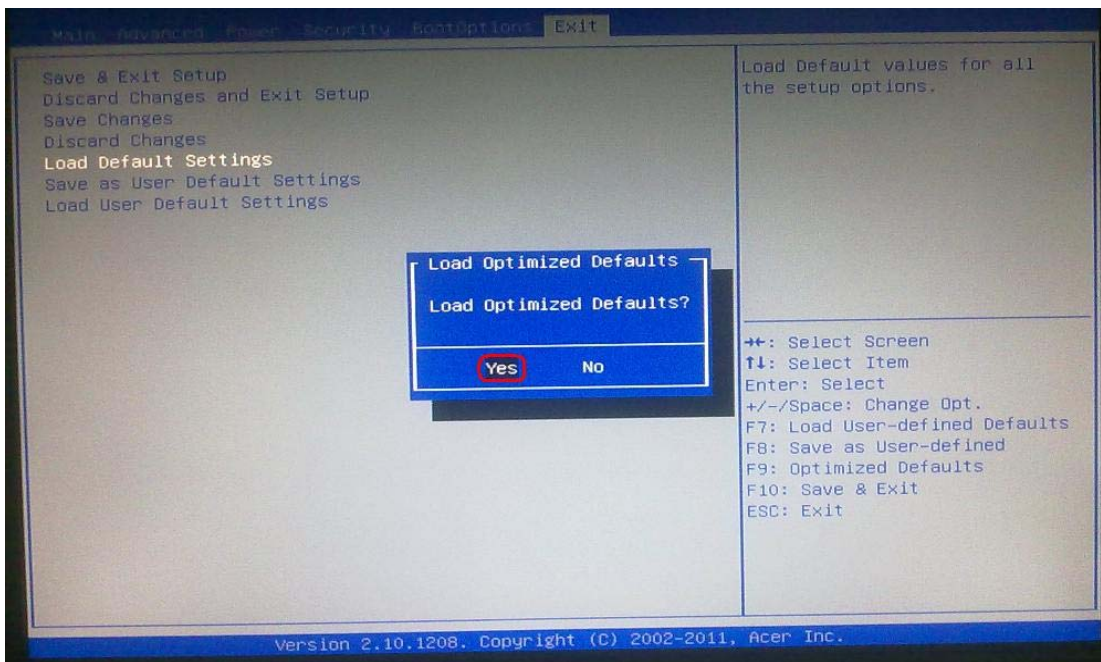


Note 1: The AFUWIN tool version is by case.

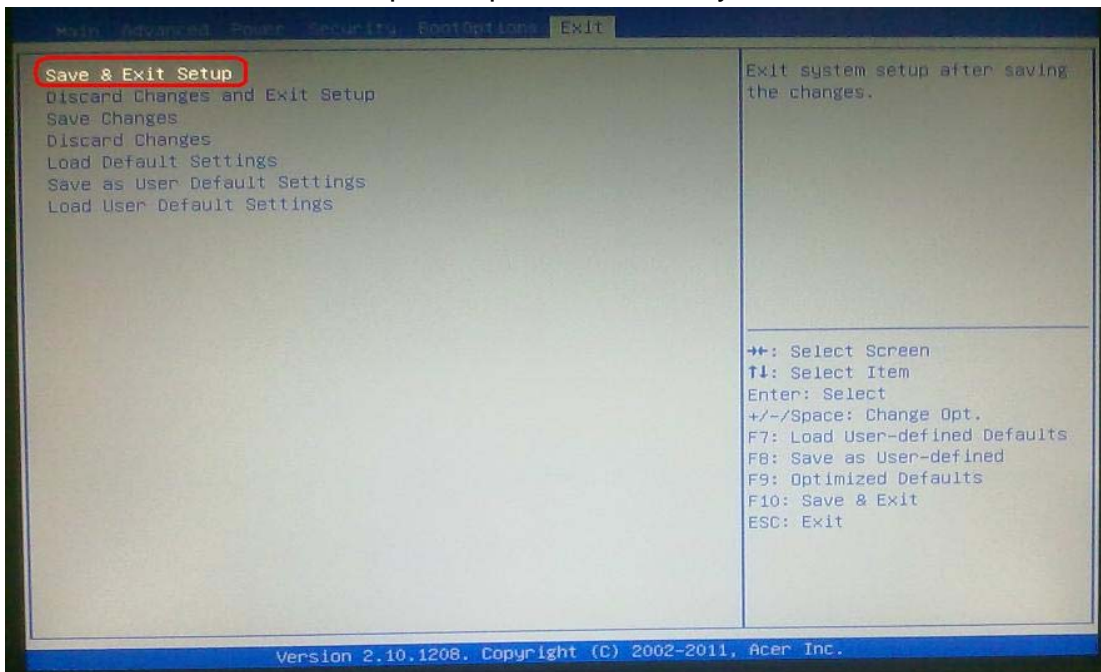
4. After finishing flashing BIOS, please don't execute any programs and reboot the system directly.
5. When system reboot, please press "Del" to enter BIOS Setup.
6. In Exit page, select "Load Default Settings" and press "Enter" key.



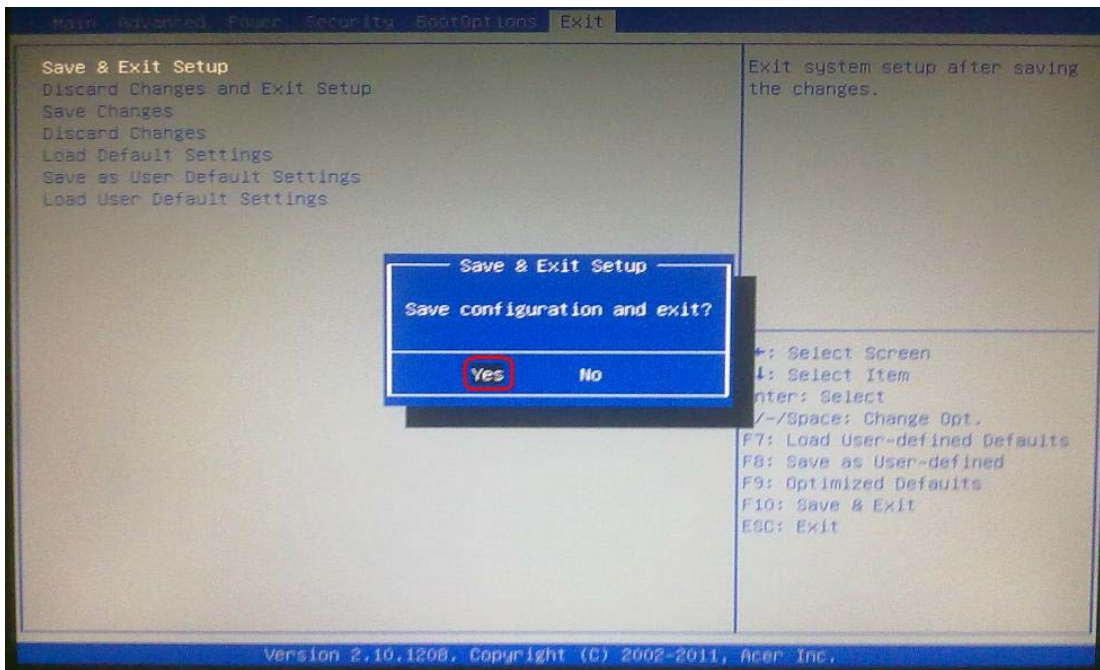
7. Select “Yes” and press “Enter” key.



8. Select “Save & Exit Setup” and press “Enter” key.



9. Select “Yes” and press “Enter” key.



10. Flash BIOS is finished.