

## How to update BIOS for Q2532 series

### PUBLISHED FROM GIGABYTE

[HOW-TO]

✓ You will learn how to update BIOS for Q2532 series under DOS correctly.

[Tool kit]

USB bootable disk

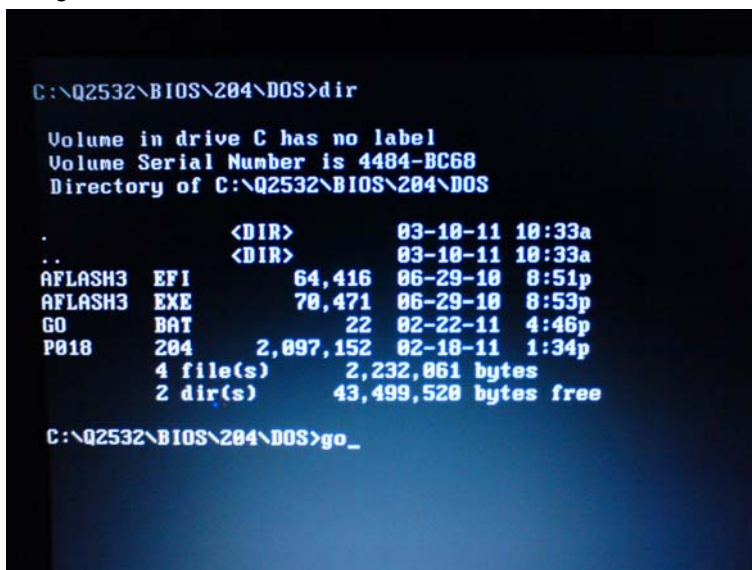
[STEP – Download and update BIOS for Q2532 series]

1. Connect power core into DC jack.
2. Download the latest version of BIOS from Official Web Site.
3. Unzip the package to USB bootable disk.
4. Restart the computer with USB bootable disk plugged in.
5. Press F12 when boot screen shows then choose your USB bootable disk to boot to DOS.





6. Type [go] under the folder that you just unzipped. (for other version of BIOS may have different folder name)



- Press enter then BIOS update process starts.

```
Aflash3 utility in DOS Environment
Revision: 2.4

Current BIOS Model Name:      P018
Current BIOS Revision:        204
Current BIOS Core Built Date: 02/18/2011

Update Image Model Name:      P018
Update Image Revision:        204
Update Image Core Built Date: 02/18/2011

Flash ROM type:               MX25L3205D

Erasing the Flash ROM...
***** / 100
Programming the Flash ROM...
***** \ 98

Warning:
BIOS Updating is in Progress, Do not turn off the Power!!
```

- Once finishing update, please press Ctrl, Alt, and Del keys altogether to reboot the system.

```
Revision: 2.4

Current BIOS Model Name:      P018
Current BIOS Revision:        204
Current BIOS Core Built Date: 02/18/2011

Update Image Model Name:      P018
Update Image Revision:        204
Update Image Core Built Date: 02/18/2011

Flash ROM type:               MX25L3205D

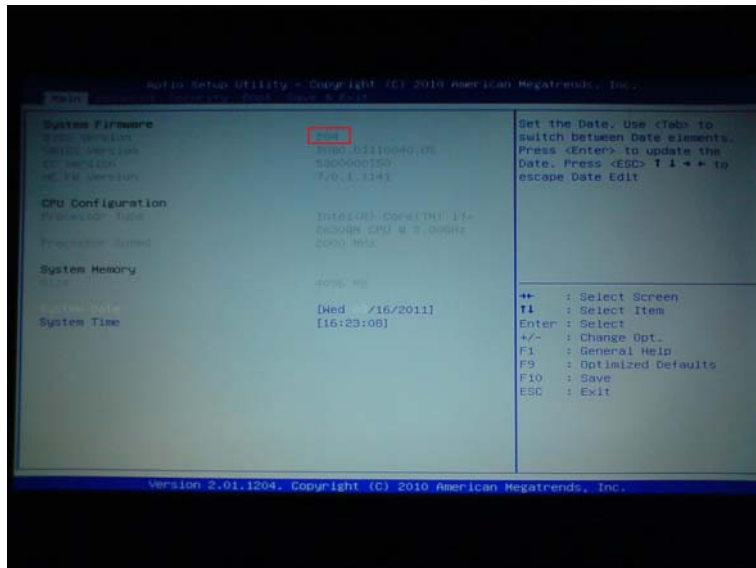
Erasing the Flash ROM...
***** / 100
Programming the Flash ROM...
***** / 100
Verifying...
***** / 100

Finish updating the BIOS Image!!

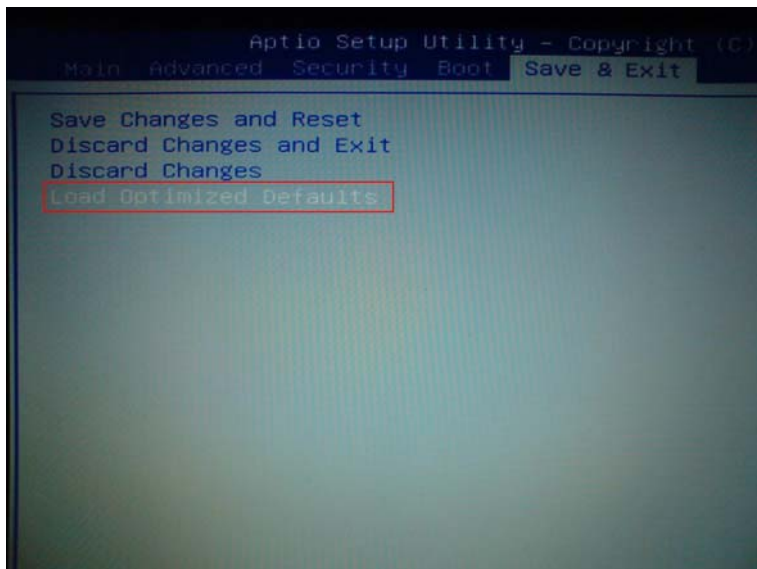
Please restart your computer.

C:\Q2532\BIOS\204\DOS>
```

9. Power on the computer then press F2 to go to BIOS Setup Utility.
10. Check the System BIOS version if it be correct as the updated version.

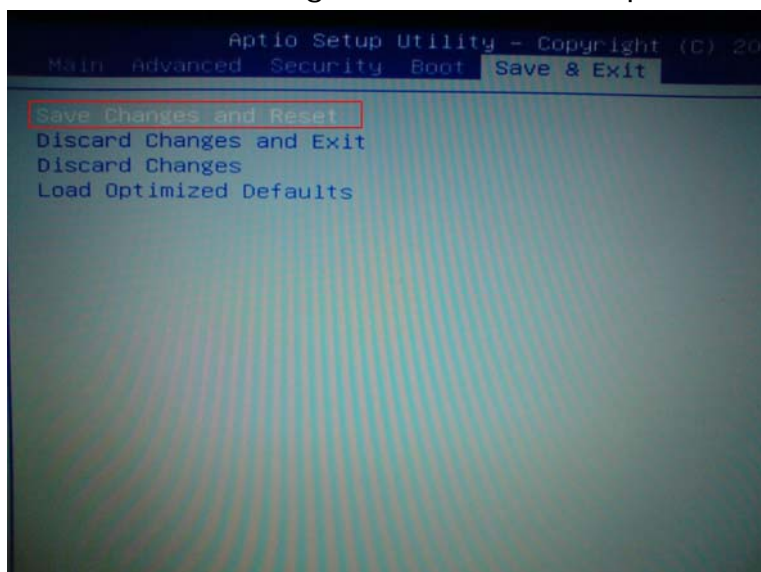


11. Select Load Optimized Defaults then press enter.



12. Press enter on Yes to load default.

13. Select Save Changes and Reset then press enter.

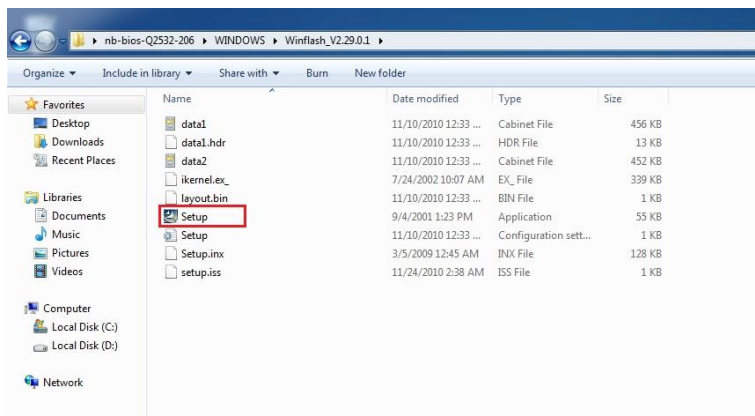


## [HOW-TO]

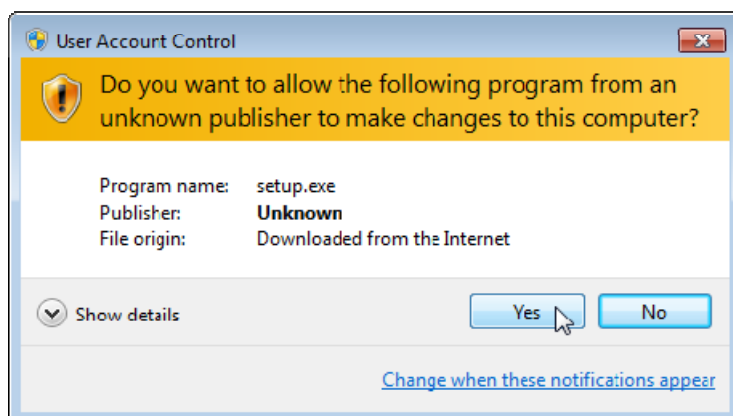
- ✓ You can also update BIOS for Q2532 series under WINDOWS7.

## [STEP – Download and update BIOS for Q2532 series]

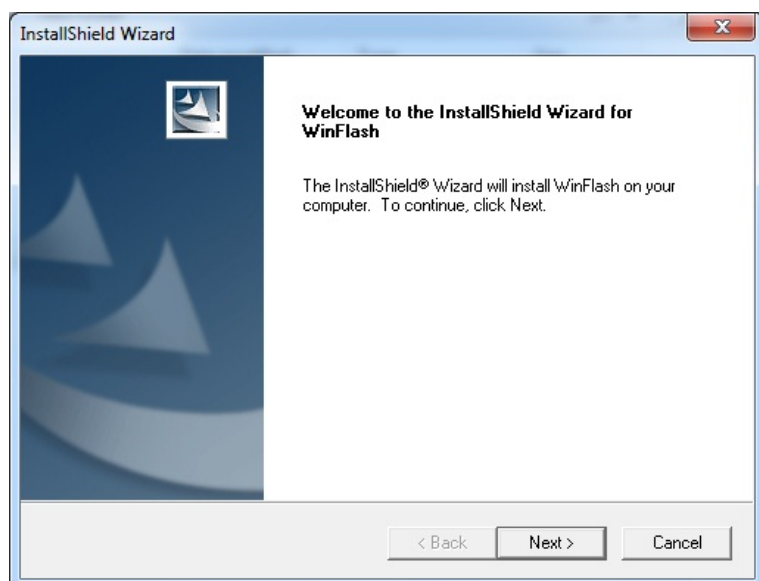
1. Connect power core into DC jack.
2. Download the latest version of BIOS from Official Web Site and unzip to desktop.
3. Double click [Setup.exe] to install Winflash.



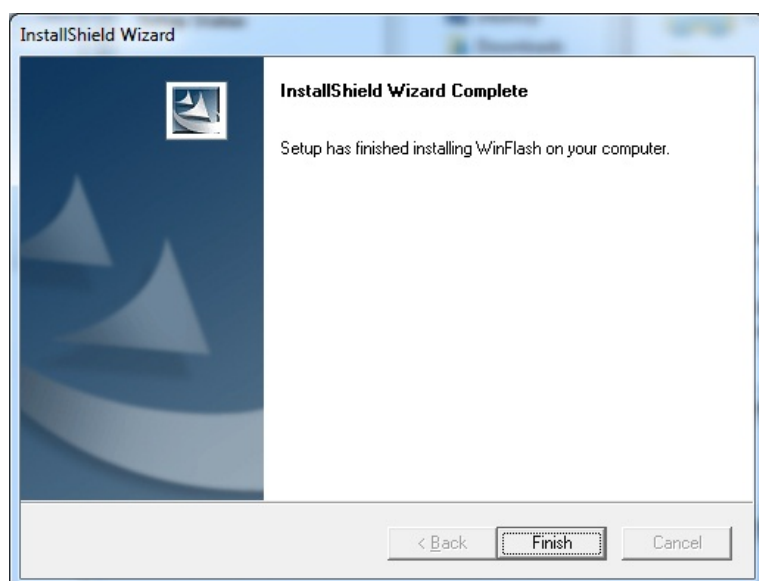
4. Click [Yes] while UAC alert pop-up.



5. Click [Next] on InstallShield Wizard dialog box.



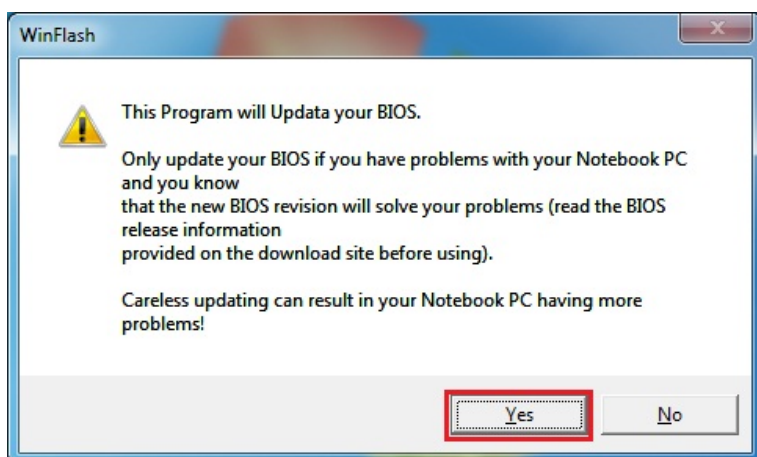
6. Click [Finish] once InstallShield Wizard Complete.



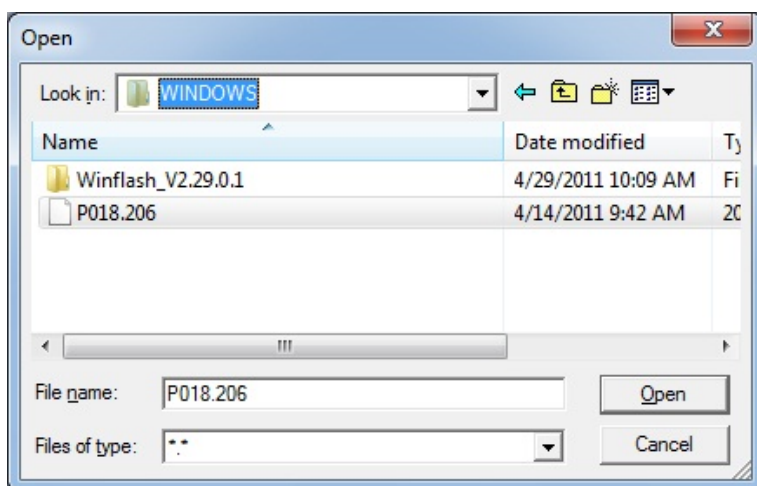
7. Click [Winflash V2.29.0.1] on Windows Start Menu.



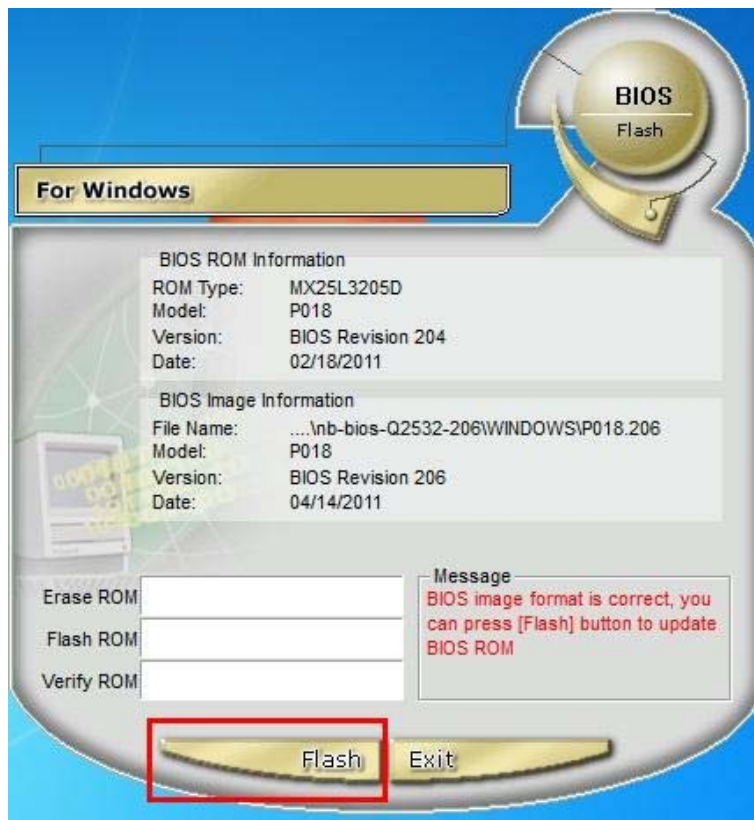
8. Click [Yes] on WinFlash dialog box.



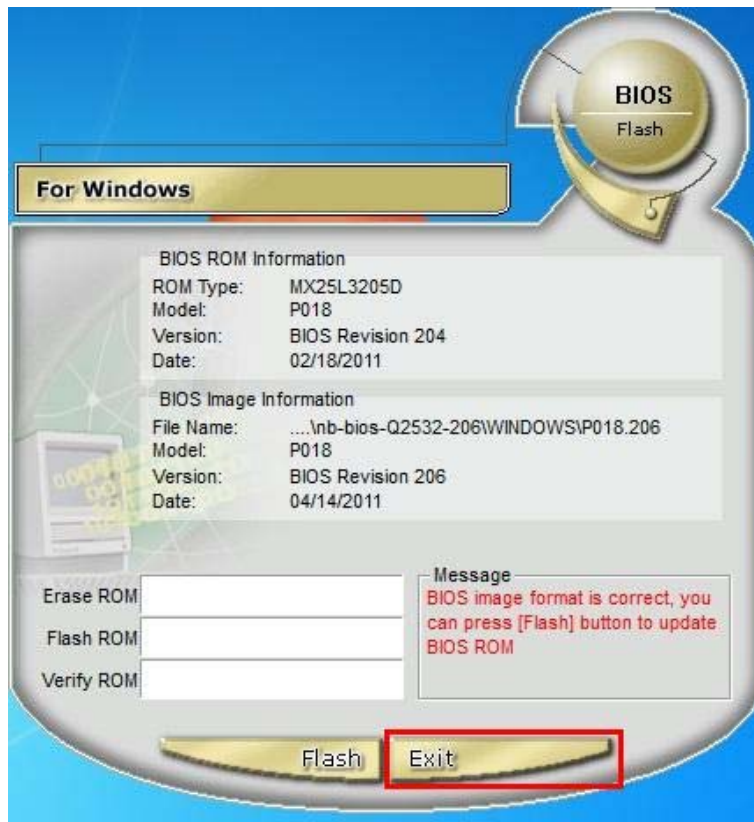
9. Select BIOS file and press [Open].



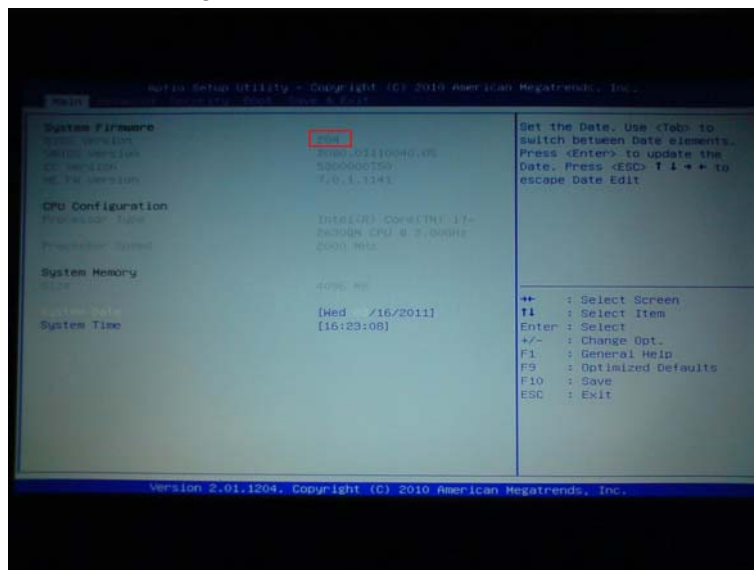
10. Click [Flash] button on WinFlash application then BIOS starts to flash new BIOS.



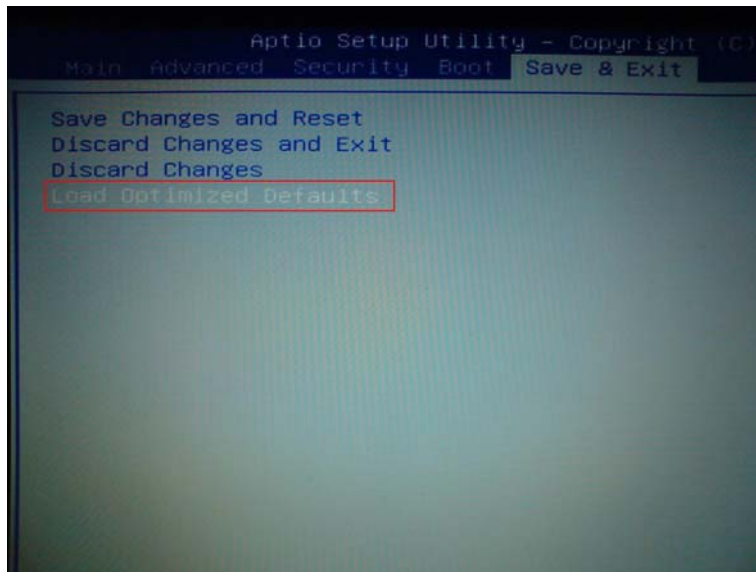
- Once finish Flashing, click [Exit] button then system shut down automatically.



- Power on the computer then press F2 to go to BIOS Setup Utility.
- Check the System BIOS version if it be correct as the updated version.

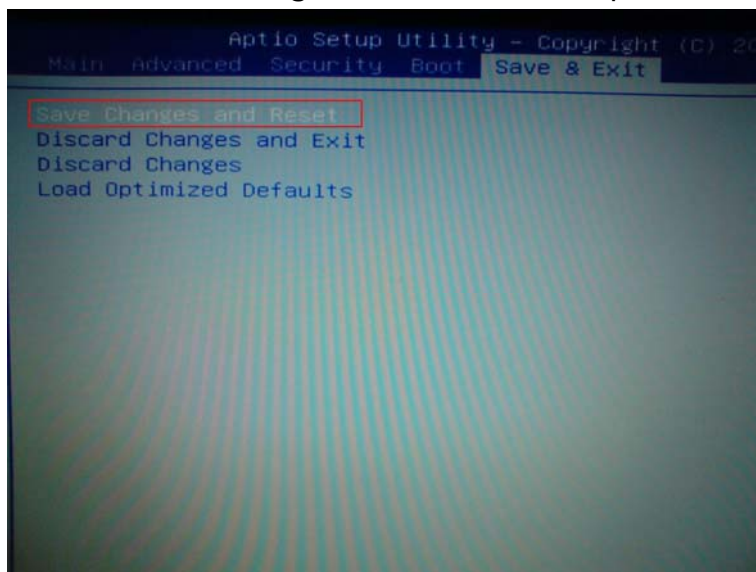


14. Select Load Optimized Defaults then press enter.



15. Press enter on Yes to load default.

16. Select Save Changes and Reset then press enter.



## **About GIGABYTE** *Upgrade Your Life*

GIGABYTE, headquartered in Taipei, Taiwan, is known as a global leading brand in the IT industry, with employees and business channels in almost every country. Founded in 1986, GIGABYTE started as a research and development team and has since taken the lead in the world's motherboard market. On top of motherboards and graphics accelerators, GIGABYTE further expanded its product portfolio to include notebook and desktop PCs, digital home entertainment appliances, networking servers, communications, mobile and handheld devices, servicing every facet of people's lives at home or business. Everyday GIGABYTE aims to "Upgrade Your Life" with the most innovative designs and impeccable quality and services. Visit [www.gigabyte.com](http://www.gigabyte.com) for more information.

## 更新 Q2532 系列的 BIOS

PUBLISHED FROM GIGABYTE

### [目標]

- ✓ 於 DOS 下正確地更新 Q2532 系列的 BIOS

### [所需工具]

USB 可開機磁碟

### [更新步驟 – 下載並刷新更新 Q2532 系列的 BIOS]

1. 將電源插頭插入電源孔並確認電力由變壓整流器供電。
2. 從技嘉產品網頁下載最新版的 BIOS 壓縮檔。
3. 將您下載下來的壓縮檔解壓縮至 USB 可開機磁碟。
4. 重新開機並插上此 USB 可開機磁碟。

5. 當進入開機時的 POST 畫面按下 F12 鍵並在 Boot Manager 下選擇您的 USB 可開機磁碟。



6. 在剛才已解壓縮的資料夾下鍵入 [go]. (對於不同版本的 BIOS 可能會有不同的資料夾名稱)

```
C:\Q2532\BIOS\204\DOS>dir

Volume in drive C has no label
Volume Serial Number is 4484-BC68
Directory of C:\Q2532\BIOS\204\DOS

.                <DIR>                03-10-11  10:33a
..               <DIR>                03-10-11  10:33a
AFLASH3  EFI           64,416  06-29-10  8:51p
AFLASH3  EXE           70,471  06-29-10  8:53p
GO        BAT            22  02-22-11  4:46p
P018      204       2,097,152  02-18-11  1:34p
          4 file(s)      2,232,061 bytes
          2 dir(s)      43,499,520 bytes free

C:\Q2532\BIOS\204\DOS>go_
```

7. 按下 enter 鍵後 BIOS 開始更新.

```
Aflash3 utility in DOS Environment
Revision: 2.4

Current BIOS Model Name:      P018
Current BIOS Revision:        204
Current BIOS Core Built Date: 02/18/2011

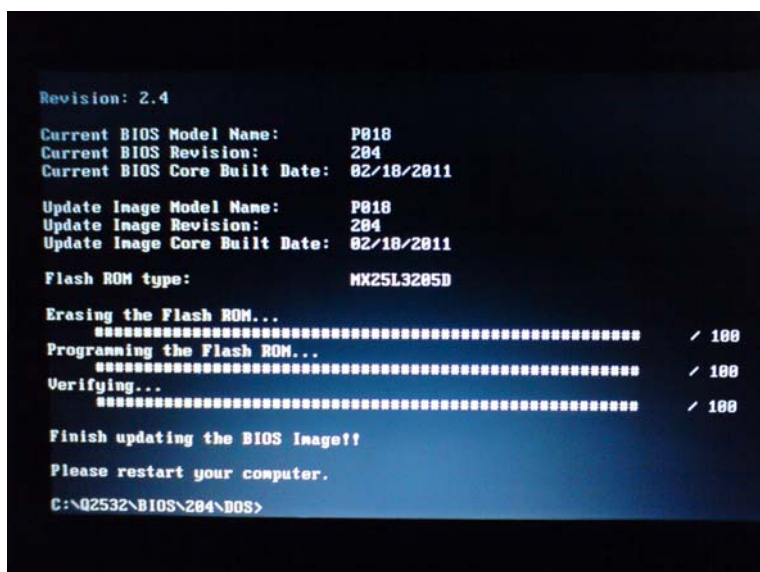
Update Image Model Name:      P018
Update Image Revision:         204
Update Image Core Built Date: 02/18/2011

Flash ROM type:               MX25L3205D

Erasing the Flash ROM...
***** / 100
Programming the Flash ROM...
***** \ 98

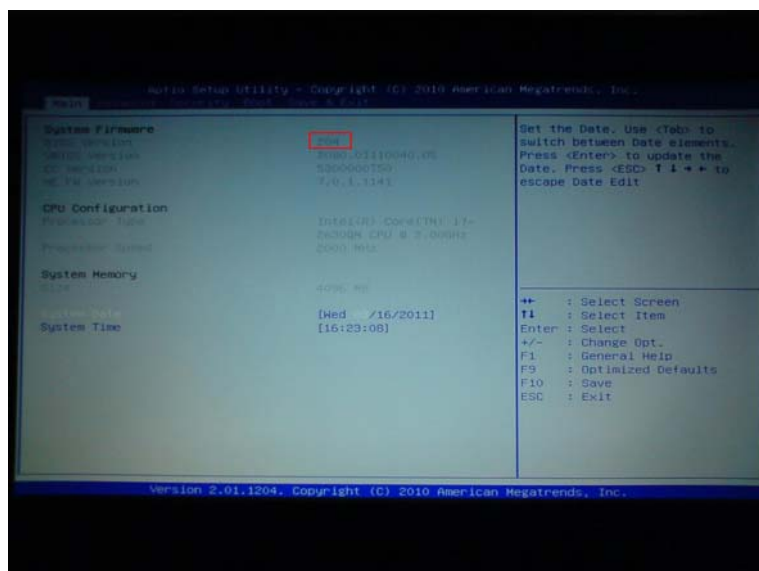
Warning:
BIOS Updating is in Progress, Do not turn off the Power!!
```

- 當完成更新後，請同時按下 Ctrl, Alt, 和 Del 等鍵使電腦軟開機。

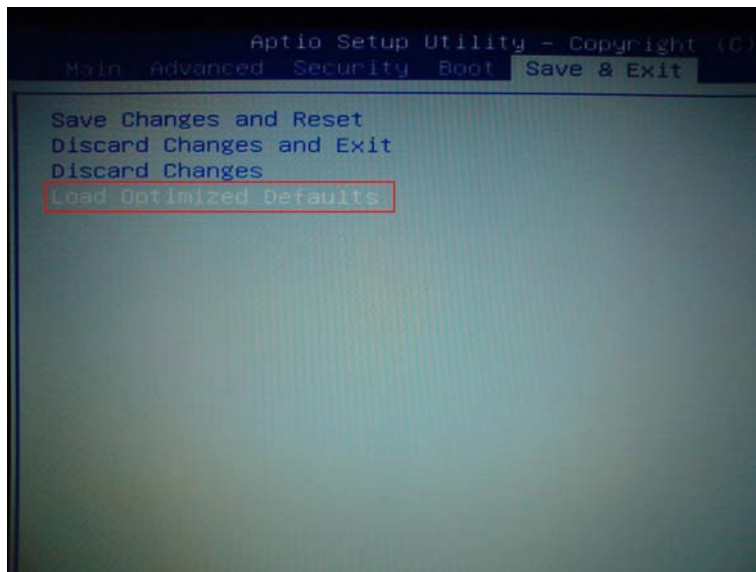


- 按下電源鍵開機並在 POST 畫面按 F2 鍵進入 BIOS Setup Utility.

- 檢查紅色圈選處以確認系統 BIOS 的版本為最新版。

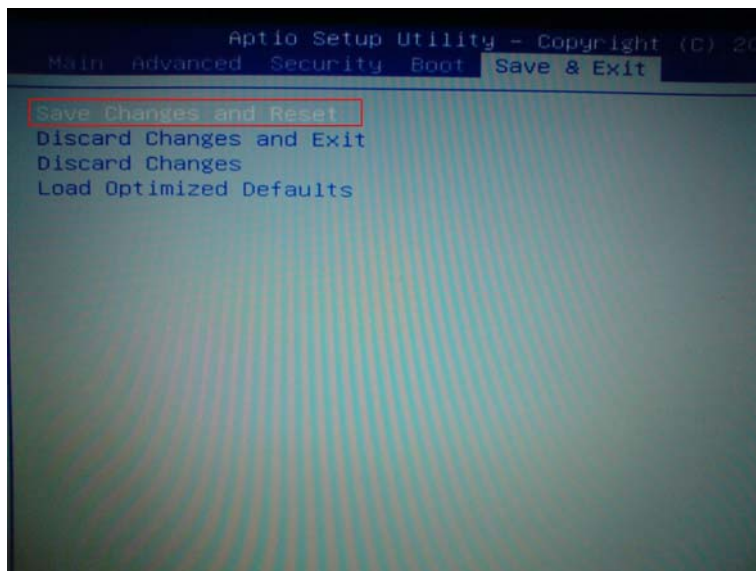


11. 選擇 Load Optimized Defaults 並按下 enter 鍵。



12. 選擇 Yes 並按下 enter 鍵以載入預設值。

13. 選擇 Save Changes and Reset 並按下 enter 鍵。

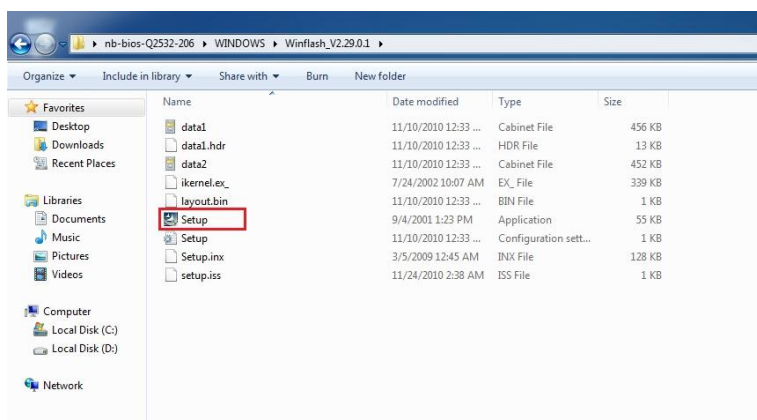


## [目標]

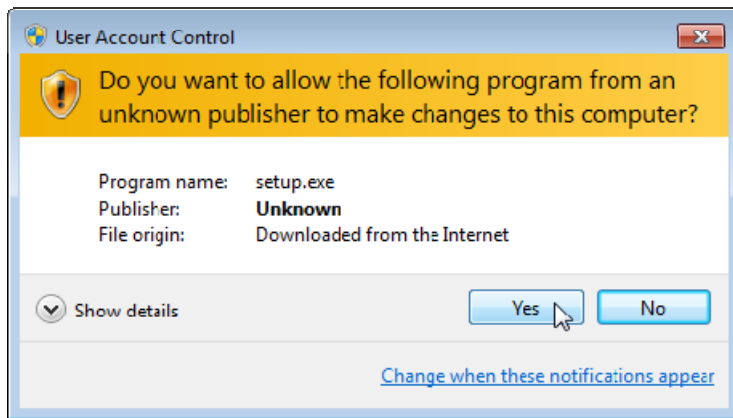
- ✓ 您也可以於 WINDOWS7 下更新 Q2532 系列的 BIOS.

## [更新步驟 - 下載並刷新更新 Q2532 系列的 BIOS]

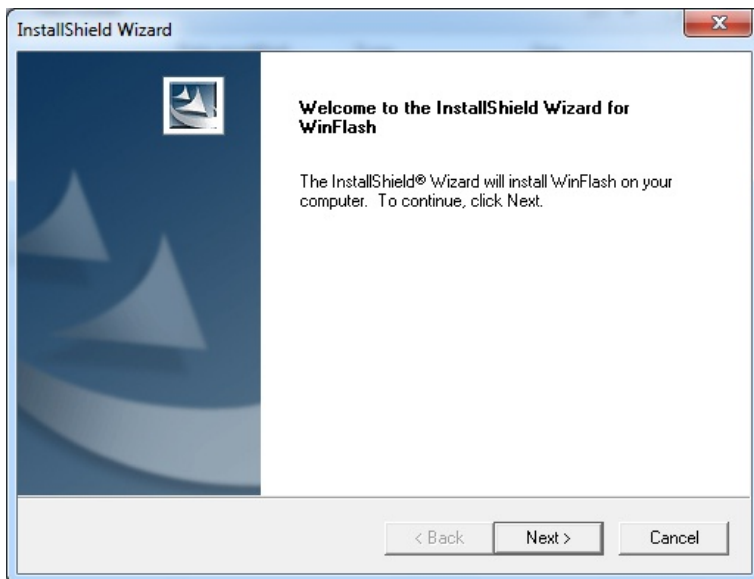
1. 將電源插頭插入電源孔並確認電力由變壓整流器供電.
2. 從技嘉產品網頁下載最新版的BIOS 壓縮檔並解壓縮至桌面.
3. 於WINDOWS目錄內雙擊[Setup.exe]以安裝Winflash.



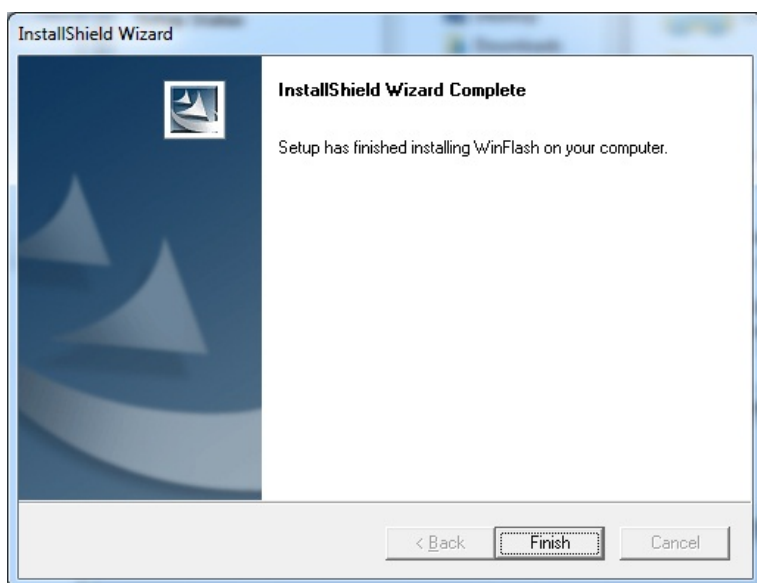
4. 當使用者帳戶控制彈出時按下[是].



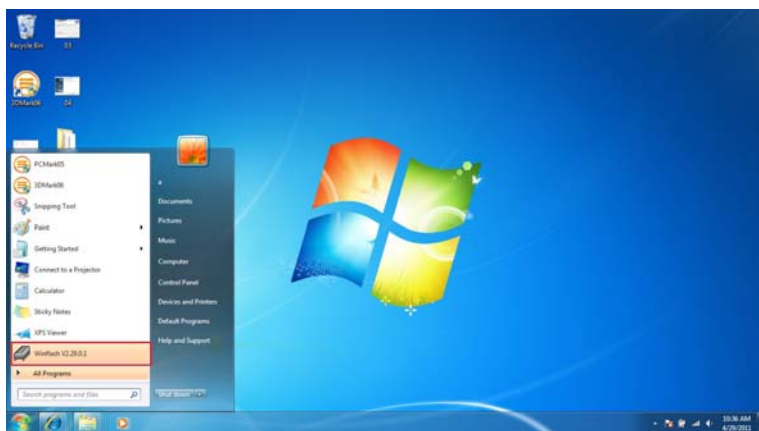
5. 當InstallShield Wizard視窗彈出時點擊[下一步].



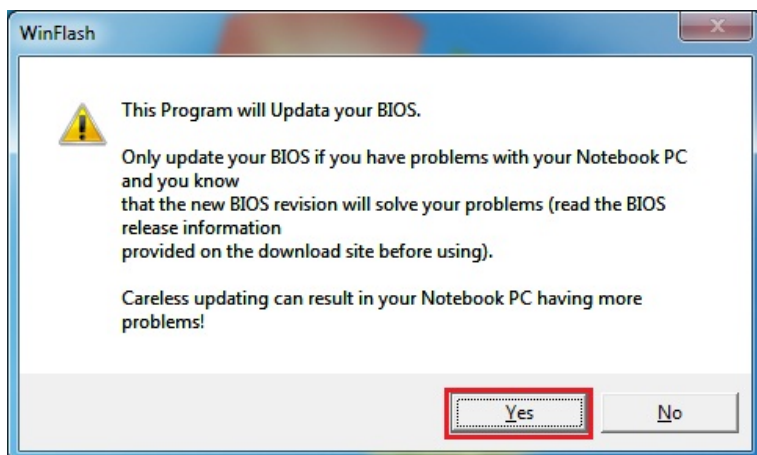
6. 當完成安裝時點擊[完成].



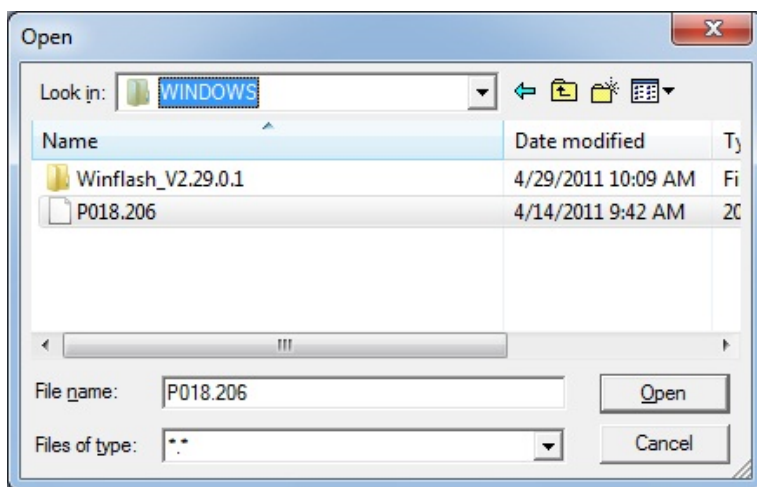
7. 於Windows的開始選單內點擊[Winflash V2.29.0.1].



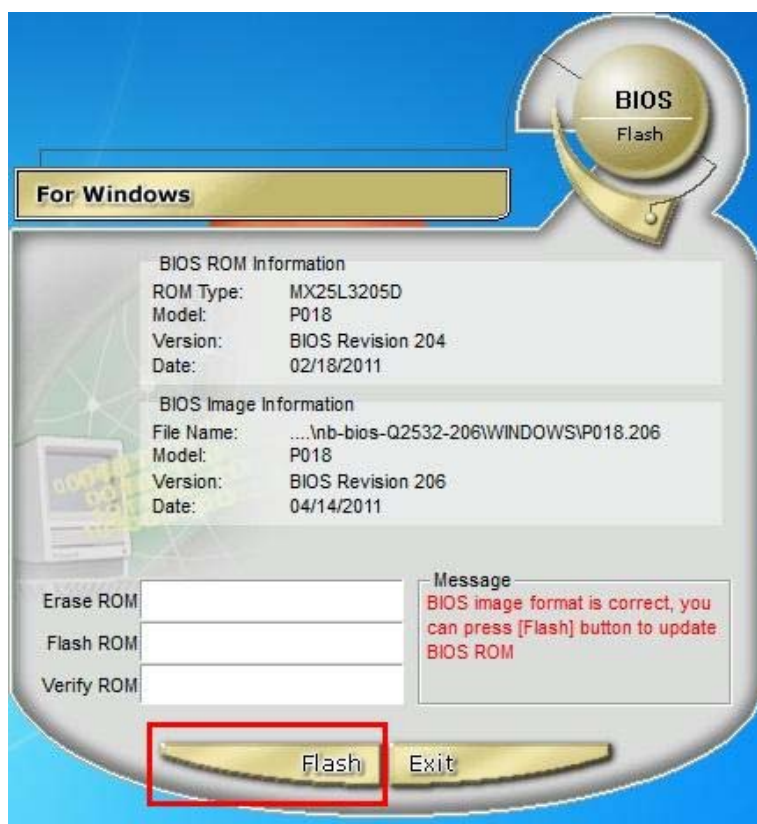
8. 於WinFlash對話方塊點擊[是].



9. 選擇BIOS檔案並點選[開啟].



10. 點擊WindFlash程式內的[Flash]按鈕後便開始刷新BIOS.

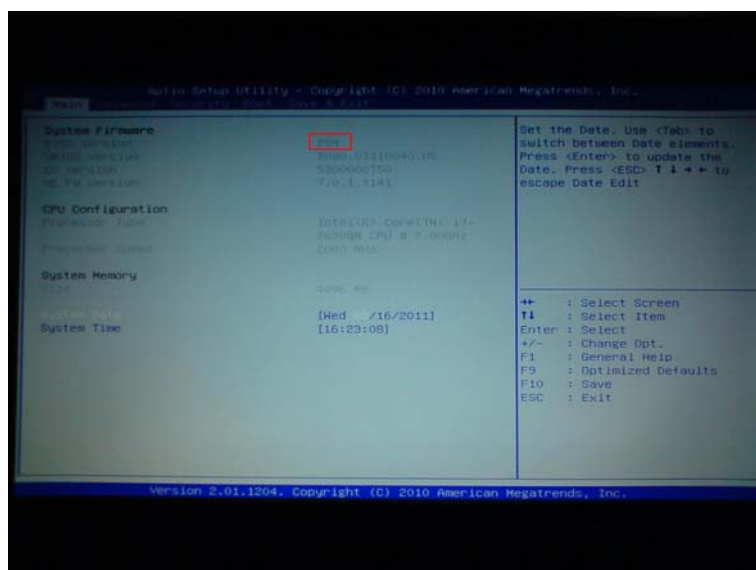


- 完成刷新後點擊[Exit]按鈕，系統便會自動關機。

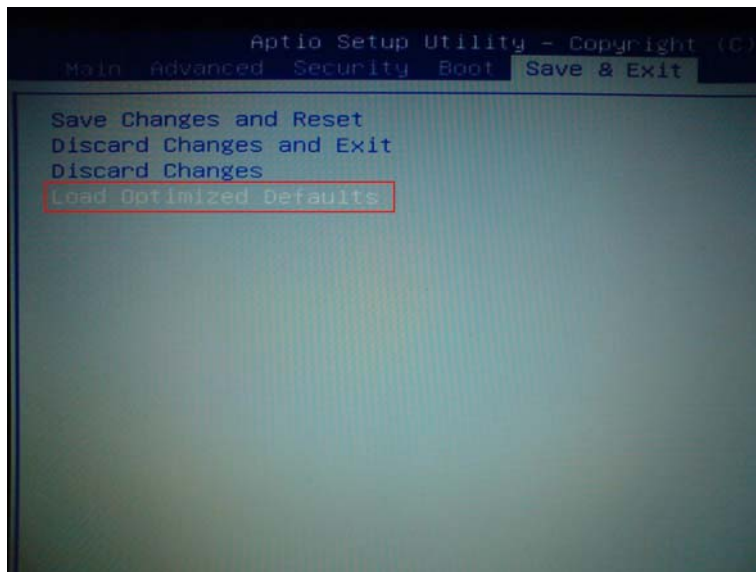


- 按下電源鍵開機並在POST畫面按F2鍵進入BIOS Setup Utility.

- 檢查紅色圈選處以確認系統 BIOS 的版本為最新版。

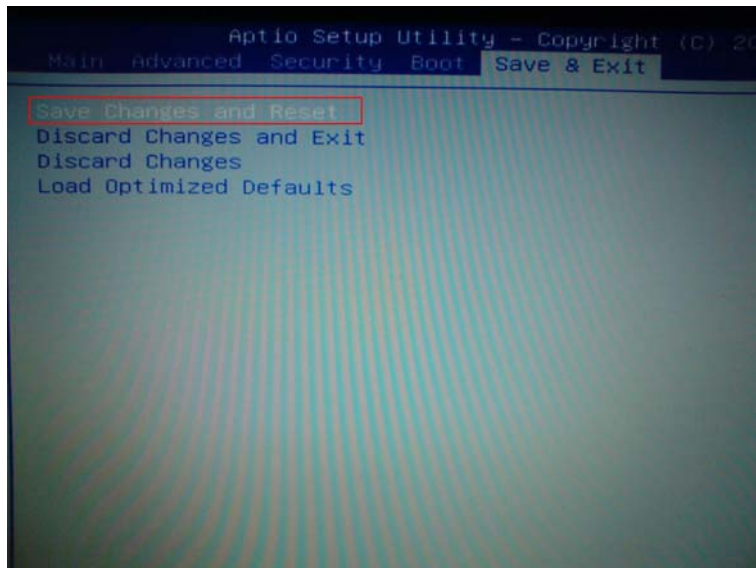


14. 選擇 Load Optimized Defaults 並按下 enter 鍵.



15. 選擇 Yes 並按下 enter 鍵以載入預設值.

16. 選擇 Save Changes and Reset 並按下 enter 鍵.



## **About GIGABYTE** *Upgrade Your Life*

GIGABYTE, headquartered in Taipei, Taiwan, is known as a global leading brand in the IT industry, with employees and business channels in almost every country. Founded in 1986, GIGABYTE started as a research and development team and has since taken the lead in the world's motherboard market. On top of motherboards and graphics accelerators, GIGABYTE further expanded its product portfolio to include notebook and desktop PCs, digital home entertainment appliances, networking servers, communications, mobile and handheld devices, servicing every facet of people's lives at home or business. Everyday GIGABYTE aims to "Upgrade Your Life" with the most innovative designs and impeccable quality and services. Visit [www.gigabyte.com](http://www.gigabyte.com) for more information.