



SKC100S3/480G Firmware Update Procedure

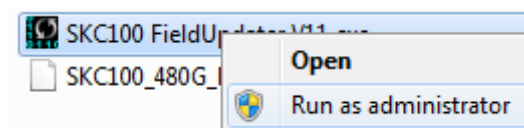
Intended for: SKC100S3/480G, SKC100S3/480GBK, SKC100S3B/480G

System Preparation:

- As a precaution, perform a backup of all your data to ensure no data is lost during the firmware update process.
- You must be running Windows 7, Vista SP2, or XP SP3 in AHCI mode for this to function properly.
- Do not unplug power at any time during the firmware update.
- Notebook users, please charge battery to full charge or use AC power to prevent any power loss during firmware upgrade.

Step 1: Launching the utility

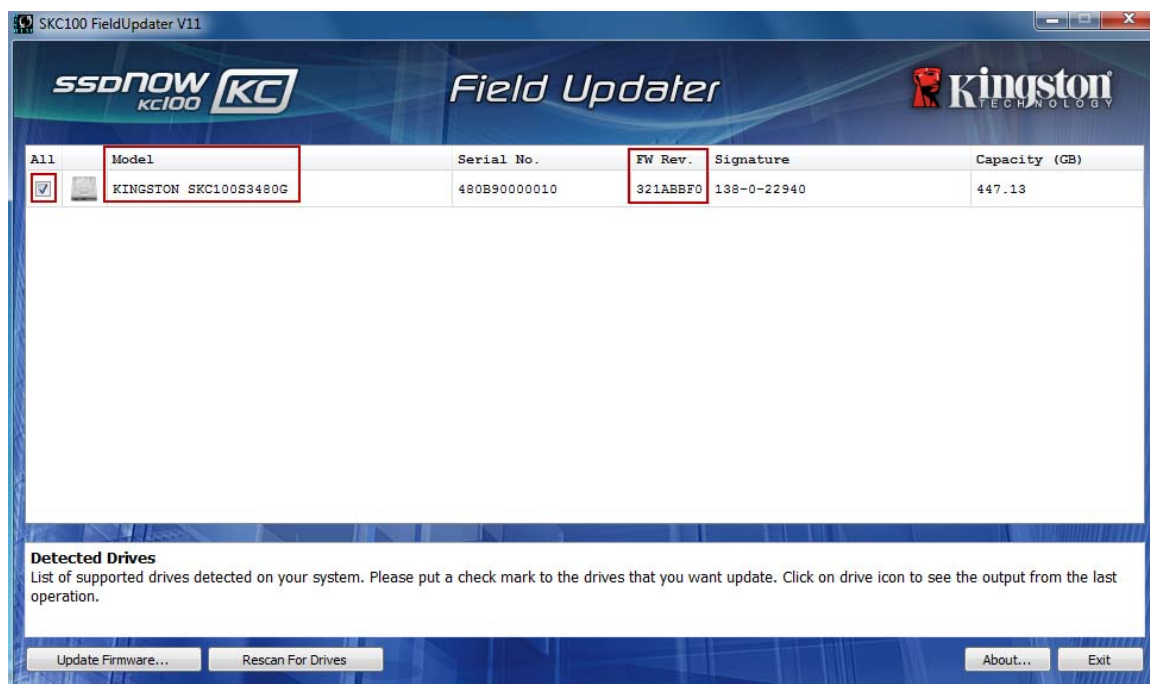
Locate your download, right-click the SKC100 Field Updater and “Run as administrator” to launch the update utility.



Step 2: Confirming your model number and firmware revision

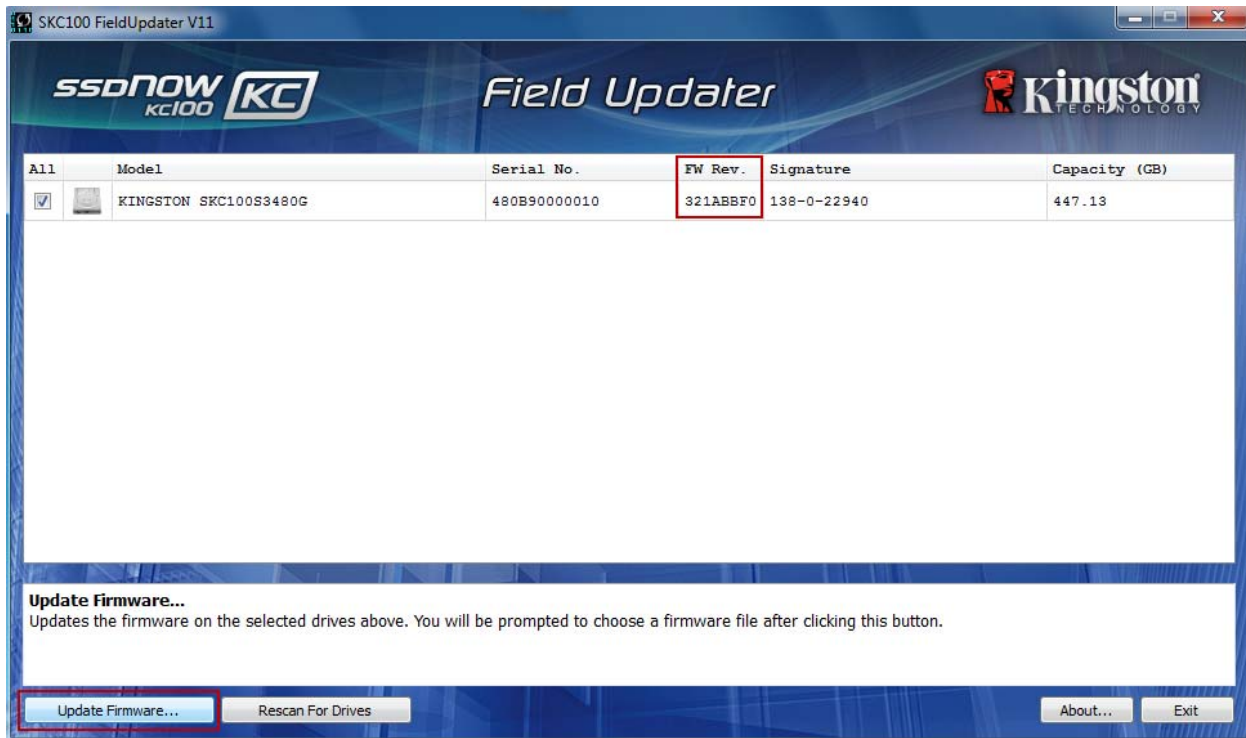
Confirm that your “SKC100S3xxxx” drive is present and select the one you wish to update by checking the selection box next to the model number.

(Note: If you wish to update multiple drives, you must do so one at a time.)



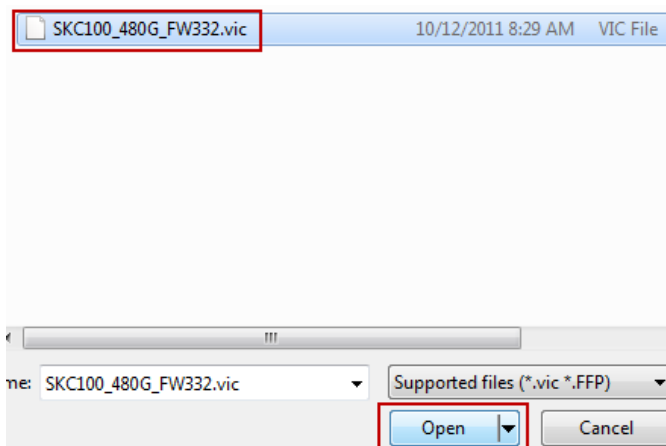
Step 3: Selecting the “Update Firmware” option

Once you've confirmed that you need to update your drive's Firmware and selected the box next to the corresponding Model Name, click on the Update Firmware button located in the lower left corner of the Application interface.



Step 4: Locating the update file

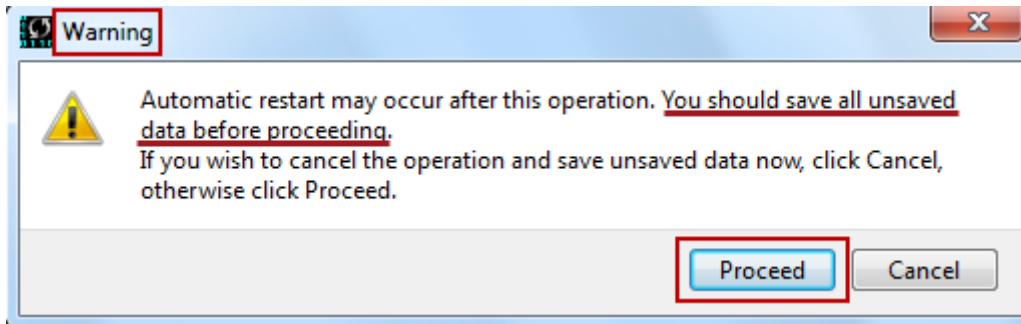
You will be prompted to select the appropriate firmware file you wish to update with. To do this, navigate to where you downloaded the update and select the file that matches the capacity of the drive you wish to update.






Step 5: Alert messaging and proceeding to update

If you haven't already backed up your data as indicated in the "System Preparation" section of this document, you should cancel the update, back up your data and then proceed back through steps 1-5. If you have successfully backed up your data, select "Proceed" to continue the update process.



Step 6: Successful update

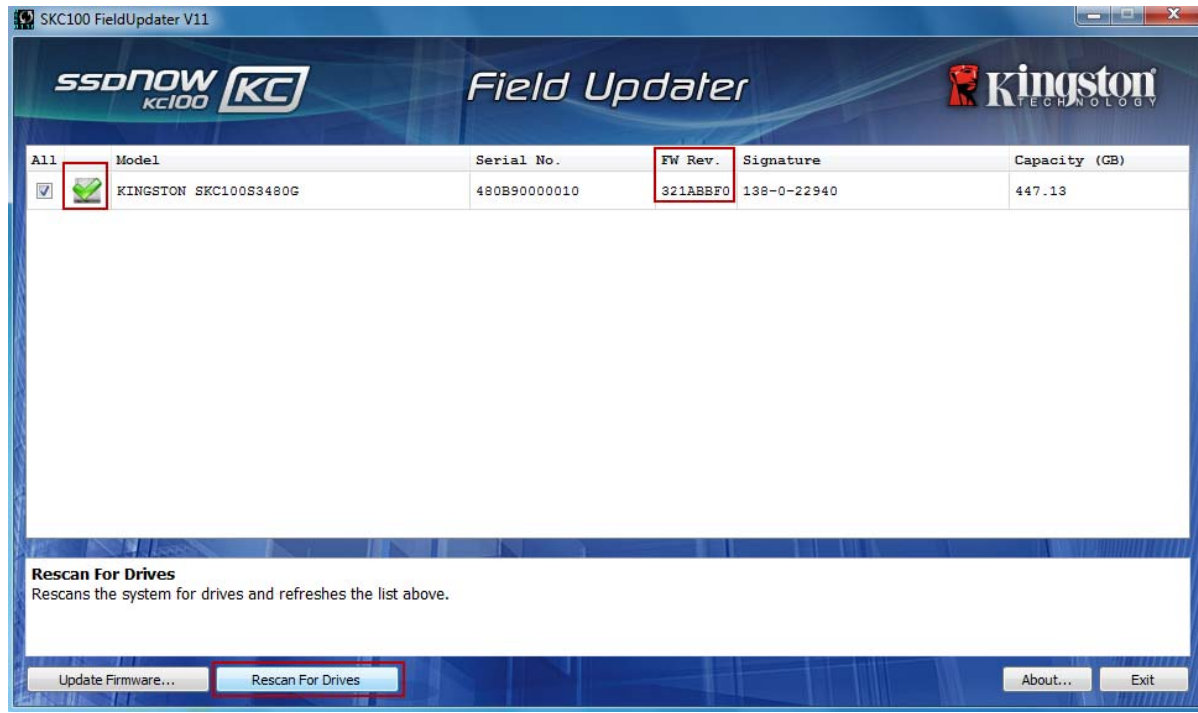
The update process will take approximately 1 minute to complete. When it has completed successfully, you will receive a green check next to your Model "**Kingston SKC100S3xxxx**". Proceed to step 7 for additional confirmation information.

All	Model	Serial No.	FW Rev.	Signature	Capacity (GB)
<input checked="" type="checkbox"/>	 KINGSTON SKC100S3480G	480B90000010	321ABBF0	138-0-22940	447.13



Step 7: Confirming successful update

As a secondary confirmation, select the “Rescan for Drives” button in the lower left corner of the application. This will enable the utility to refresh your drive so that you can verify that your SSD’s firmware has been updated. Continue to step 8.



Step 8: Confirming successful update (cont.)

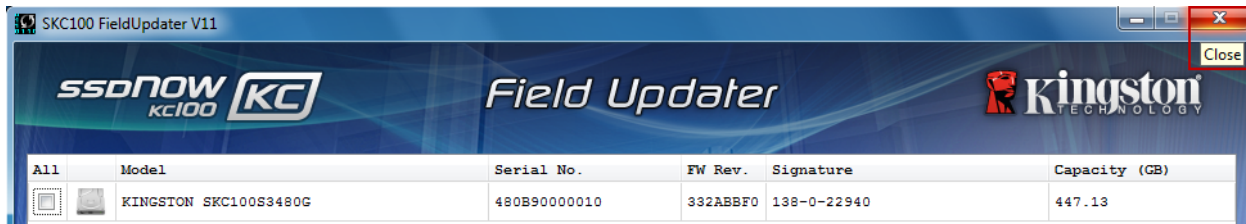
Your updated Firmware Revision will be displayed under “**FW Rev.**” and should read “**332xxxxx**”.

All	Model	Serial No.	FW Rev.	Signature	Capacity (GB)
<input checked="" type="checkbox"/>	KINGSTON SKC100S3480G	480B90000010	332ABBF0	138-0-22940	447.13



Step 9: Closing the update utility

Close the Field Updater by clicking the red “X” in the top right corner of the application. Your firmware update is complete.



Step 10: Restarting your system

Kingston recommends that you restart your system after completing the Firmware update process.