



SKC100S3 Firmware Update Procedure for all drive capacities

Intended for:

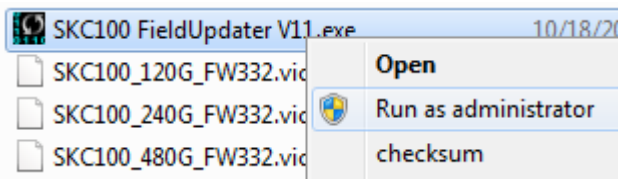
SKC100S3/120G, SKC100S3/120GBK, SKC100S3B/120G
SKC100S3/240G, SKC100S3/240GBK, SKC100S3B/240G
SKC100S3/480G, SKC100S3/480GBK, SKC100S3B/480G

System Preparation:

- As a precaution, perform a backup of all your data to ensure no data is lost during the firmware update process.
- You must be running Windows 7, Vista SP2, or XP SP3 in AHCI mode for this to function properly.
- Do not unplug power at any time during the firmware update.
- Notebook users, please charge battery to full charge or use AC power to prevent any power loss during firmware upgrade.

Step 1: Launching the utility

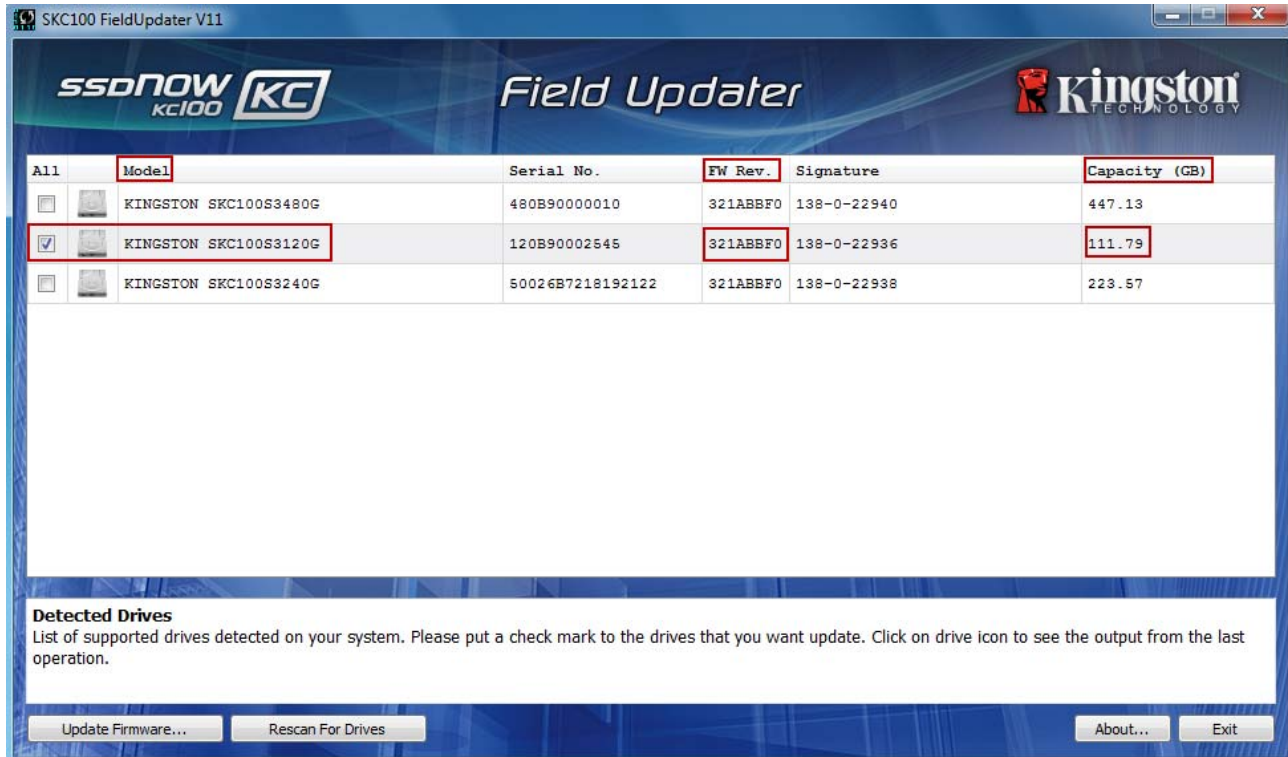
Locate your download, right-click the SKC100 Field Updater and “Run as administrator” to launch the update utility.



Step 2: Confirming your model number and firmware revision

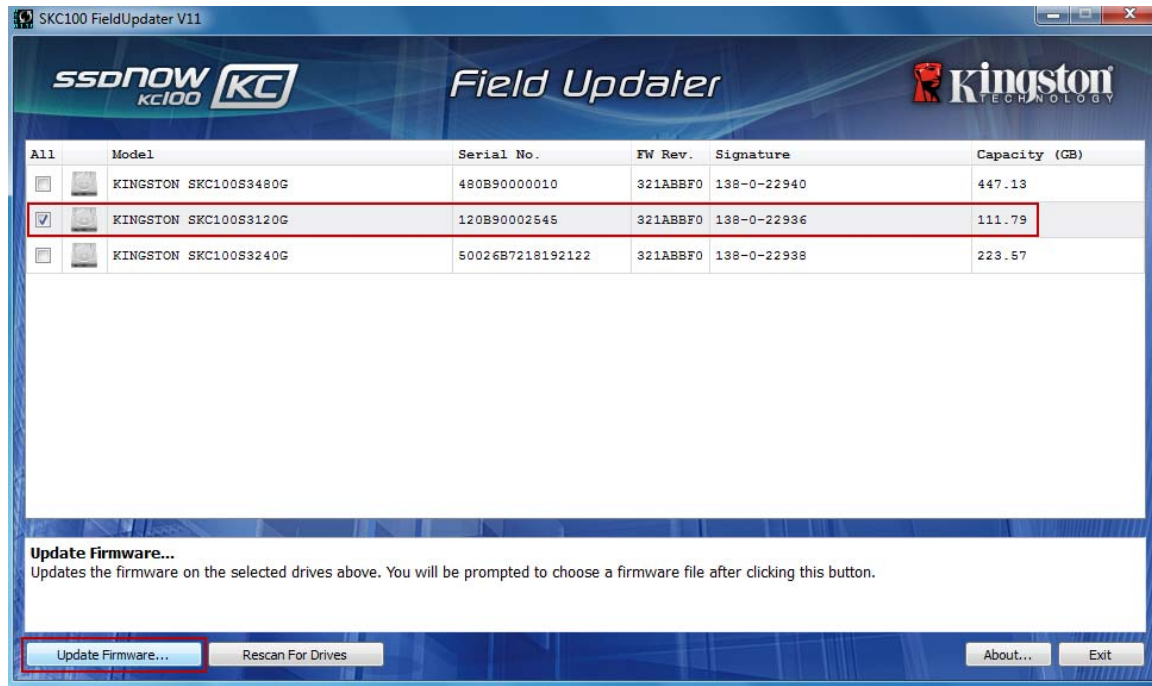
Confirm that your “**SKC100S3xxxx**” drives are present and select the one you wish to update by checking the selection box next to the model number.

(Note: It is possible to update multiple drives at the same time as long as the capacities are the same. If you have drives of varying capacities, you must do the firmware updates individually for these drives.)



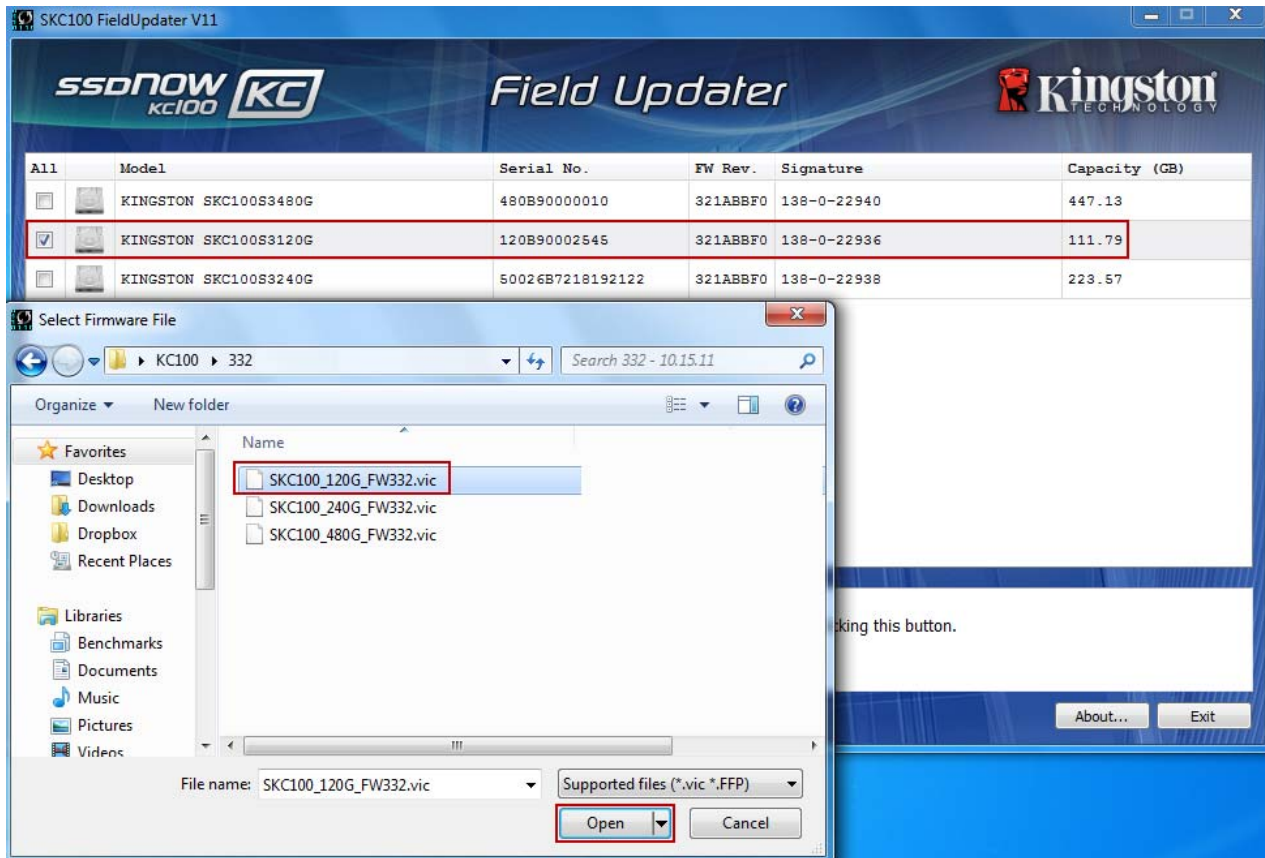
Step 3: Selecting the “Update Firmware” option

Once you’ve confirmed that you need to update your drive’s Firmware and selected the box next to the corresponding Model Name, click on the Update Firmware button located in the lower left corner of the Application interface.



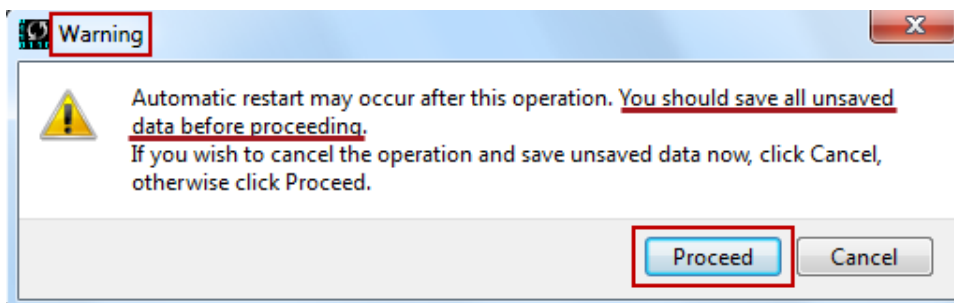
Step 4: Locating the update file

You will be prompted to select the appropriate firmware file you wish to update with. To do this, navigate to where you downloaded the update and select the file that matches the capacity of the drive you wish to update.



Step 5: Alert messaging and proceeding to update

If you haven't already backed up your data as indicated in the "System Preparation" section of this document, you should cancel the update, back up your data and then proceed back through steps 1-5. If you have successfully backed up your data, select "Proceed" to continue the update process.



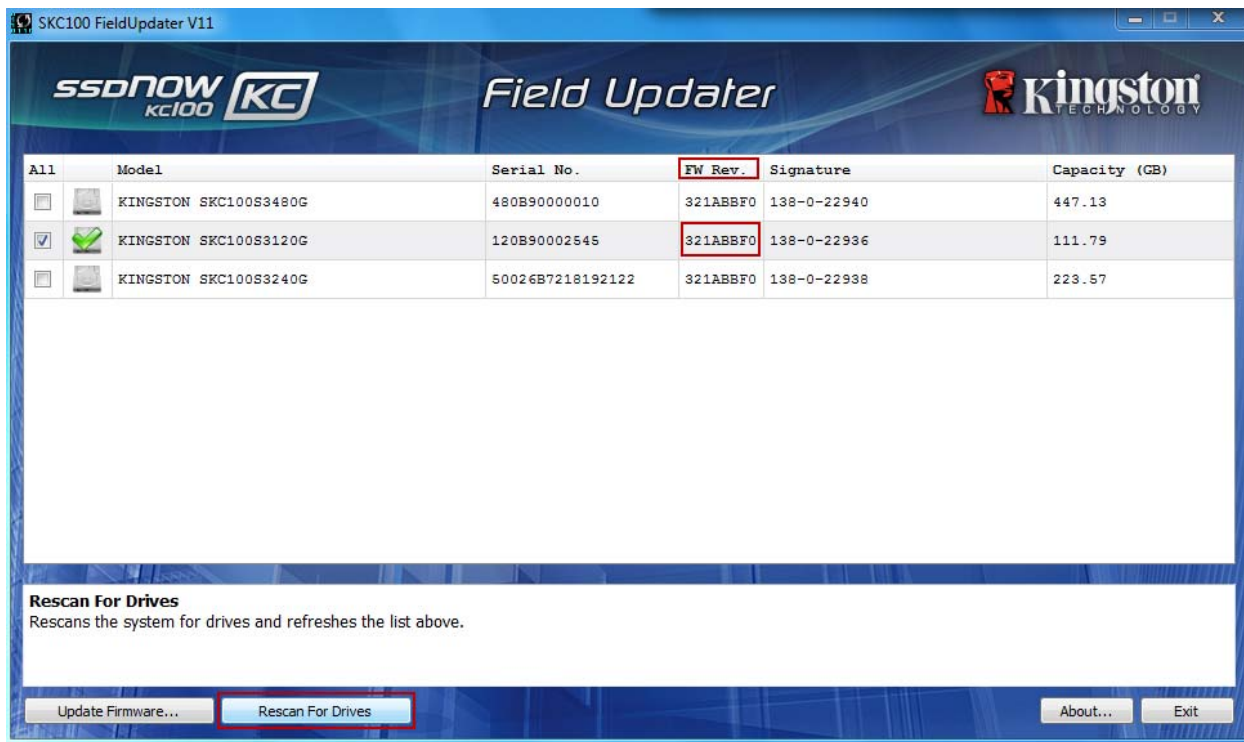
Step 6: Successful update

The update process will take approximately 1 minute to complete. When it has completed successfully, you will receive a green check next to your Model “**Kingston SKC100S3xxxx**”. Proceed to step 7 for additional confirmation information.

All	Model	Serial No.	FW Rev.	Signature	Capacity (GB)
<input type="checkbox"/>	KINGSTON SKC100S3480G	480B90000010	321ABBF0	138-0-22940	447.13
<input checked="" type="checkbox"/>	KINGSTON SKC100S3120G	120B90002545	321ABBF0	138-0-22936	111.79
<input type="checkbox"/>	KINGSTON SKC100S3240G	50026B7218192122	321ABBF0	138-0-22938	223.57

Step 7: Confirming successful update

As a secondary confirmation, select the “Rescan for Drives” button in the lower left corner of the application. This will enable the utility to refresh your drive so that you can verify that your SSD’s firmware has been updated. Continue to step 8.



The screenshot shows the SSDNow KC100 Field Updater V11 application window. The title bar reads "SKC100 FieldUpdater V11". The interface features the SSDNow KC100 logo, the text "Field Updater", and the Kingston Technology logo. Below this is a table with the same data as in Step 6. The "FW Rev." column for the selected drive (SKC100S3120G) is highlighted with a red box. At the bottom of the window, there are three buttons: "Update Firmware...", "Rescan For Drives" (which is highlighted with a red box), and "About...". Below the buttons, there is a section titled "Rescan For Drives" with the text "Rescans the system for drives and refreshes the list above."

All	Model	Serial No.	FW Rev.	Signature	Capacity (GB)
<input type="checkbox"/>	KINGSTON SKC100S3480G	480B90000010	321ABBF0	138-0-22940	447.13
<input checked="" type="checkbox"/>	KINGSTON SKC100S3120G	120B90002545	321ABBF0	138-0-22936	111.79
<input type="checkbox"/>	KINGSTON SKC100S3240G	50026B7218192122	321ABBF0	138-0-22938	223.57

Rescan For Drives
Rescans the system for drives and refreshes the list above.

Update Firmware... Rescan For Drives About... Exit

Step 8: Confirming successful update (cont.)

Your updated Firmware Revision will be displayed under “FW Rev.” and should read “332xxxxx”.

All	Model	Serial No.	FW Rev.	Signature	Capacity (GB)
<input type="checkbox"/>	KINGSTON SKC100S3480G	480B90000010	321ABBF0	138-0-22940	447.13
<input type="checkbox"/>	KINGSTON SKC100S3120G	120B90002545	332ABBF0	138-0-22936	111.79
<input type="checkbox"/>	KINGSTON SKC100S3240G	50026B7218192122	321ABBF0	138-0-22938	223.57

Step 9: Repeating the Update Process

If you would like to update additional drives of different capacities, you will need to update them one at a time. To do this, begin again at “Step 1” and repeat this process until you’ve completed your Firmware updates.

All	Model	Serial No.	FW Rev.	Signature	Capacity (GB)
<input checked="" type="checkbox"/>	KINGSTON SKC100S3480G	480B90000010	321ABBF0	138-0-22940	447.13
<input type="checkbox"/>	KINGSTON SKC100S3120G	120B90002545	332ABBF0	138-0-22936	111.79
<input type="checkbox"/>	KINGSTON SKC100S3240G	50026B7218192122	321ABBF0	138-0-22938	223.57

Step 10: Closing the update utility

Close the Field Updater by clicking the red “X” in the top right corner of the application. Your firmware update is complete.



Step 11: Restarting your system

Kingston recommends that you restart your system after completing the Firmware update process.