



How to Enable Firmware Download feature on SMC2532W-B V.1

Product

Model: SMC2532W-B V.1

Part Number: 99-012084-184

Version

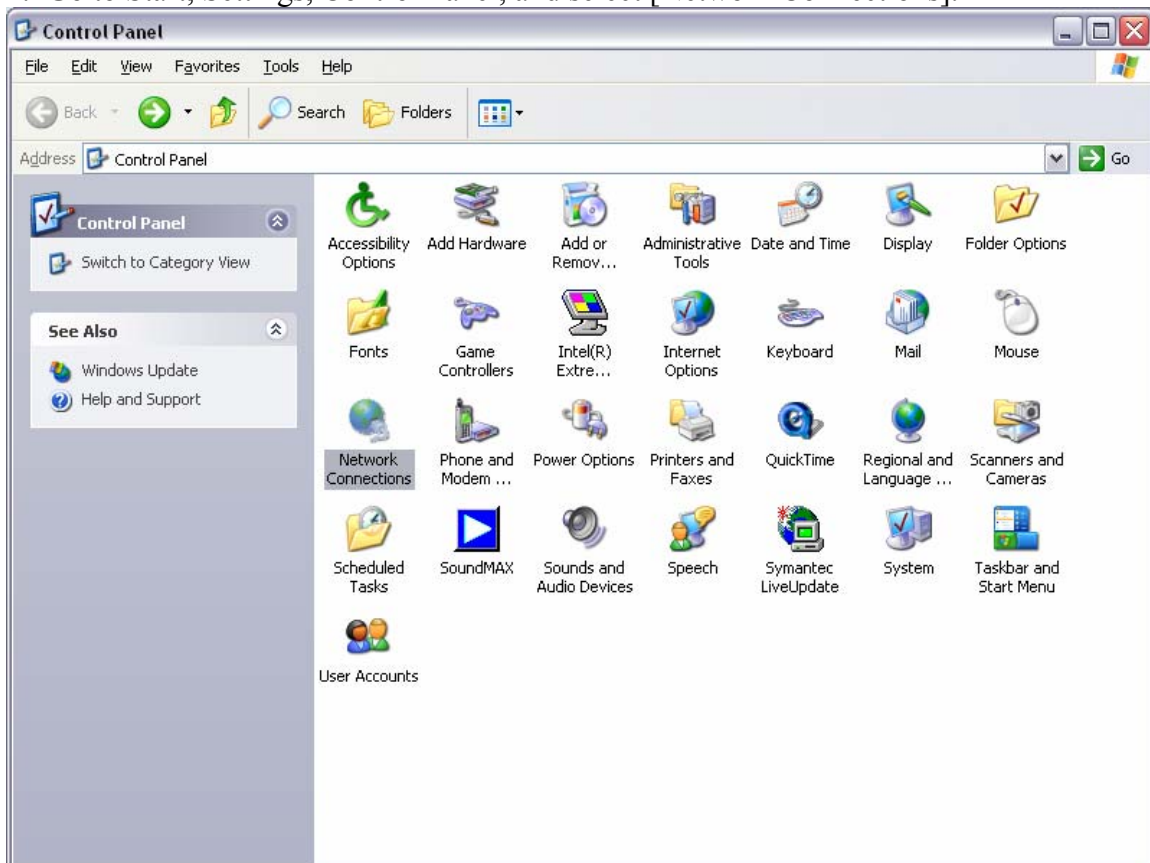
Driver: 3.1.3

Application: 1.1.0.10

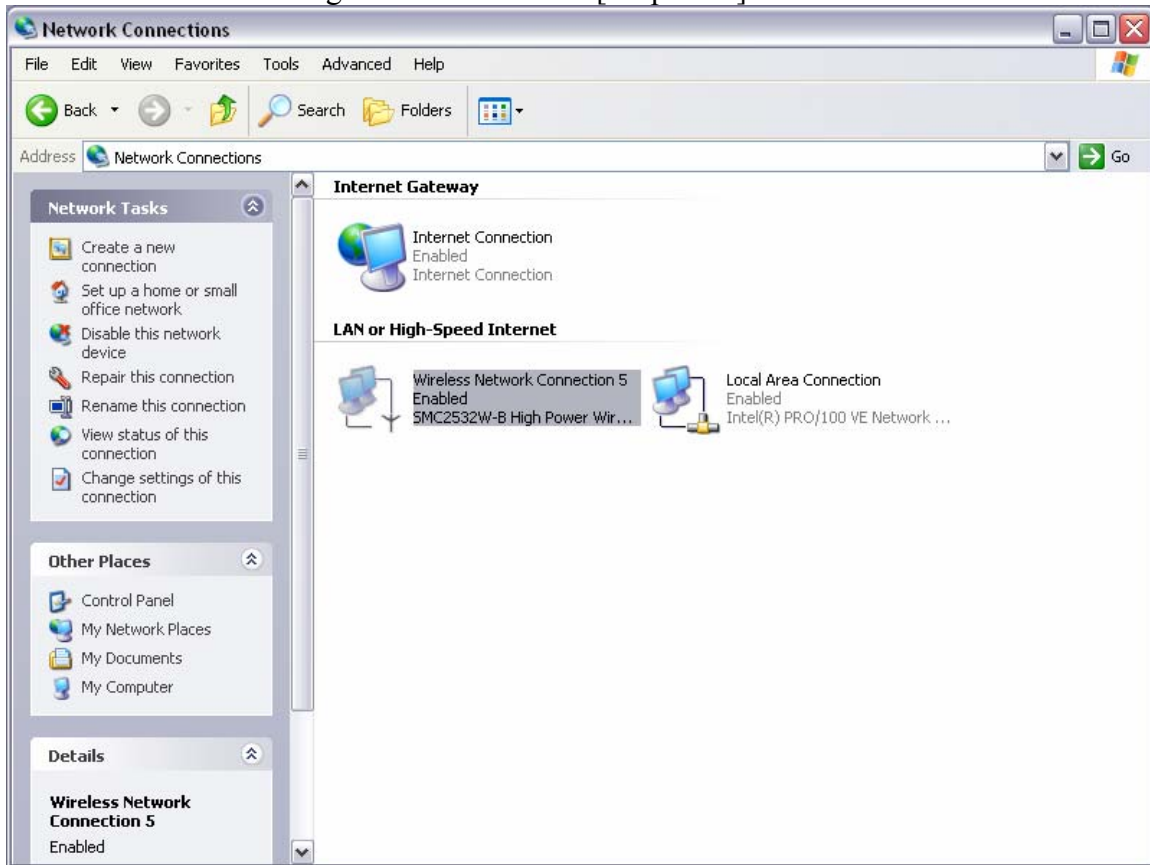
Upgrade Instructions (Windows 2000 & XP)

After installing the updated driver package, you have to enable the “Firmware Download” feature for the SMC2532W-B. This allows SMC2532W-B to update to the new firmware and use the new features in the driver/utility. Follow the steps below.

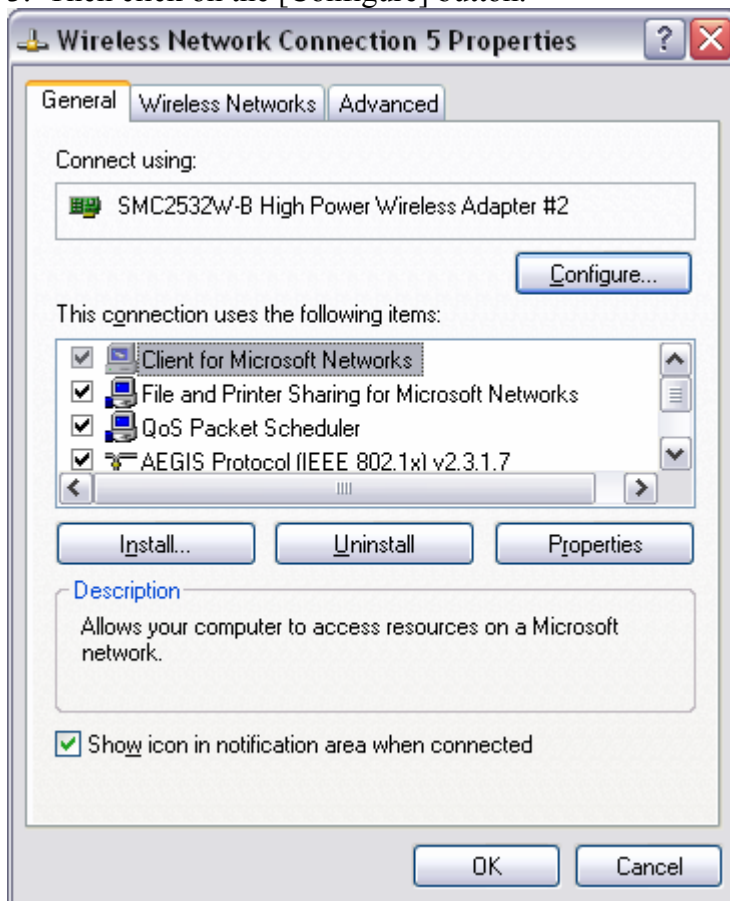
1. Go to Start, Settings, Control Panel, and select [Network Connections].



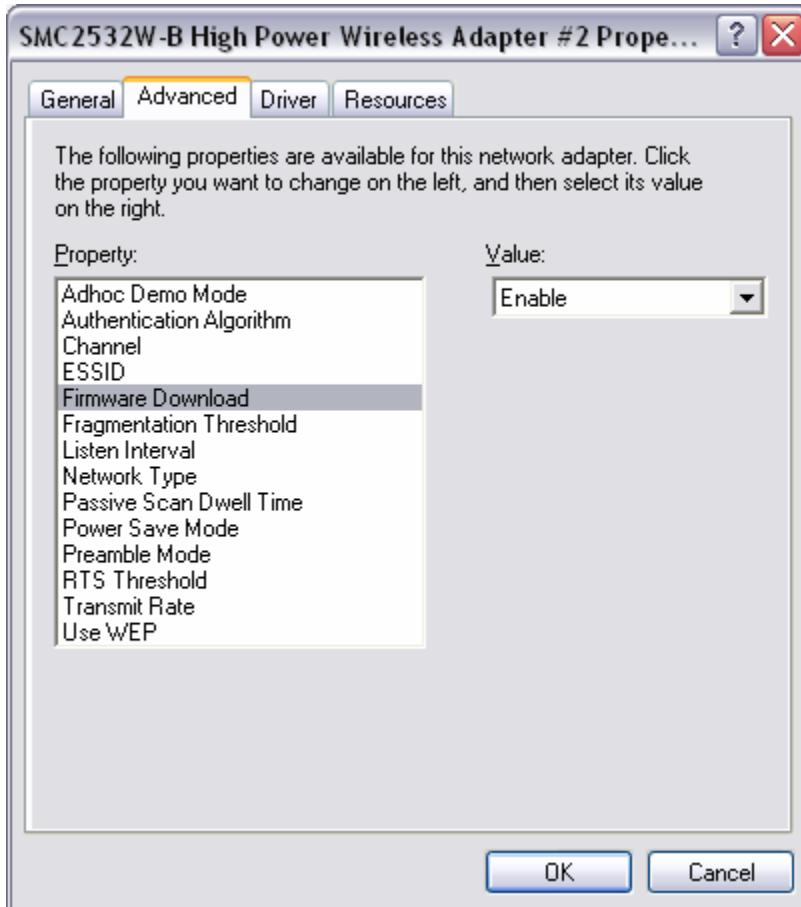
2. Under [Network Connections], select the [Wireless Network Connection] that belongs to the SMC2532W-B. Right click and choose [Properties].



3. Then click on the [Configure] button.



4. Go to the [Advanced] tab and make sure the *Firmware Download* value is set to **Enable**.

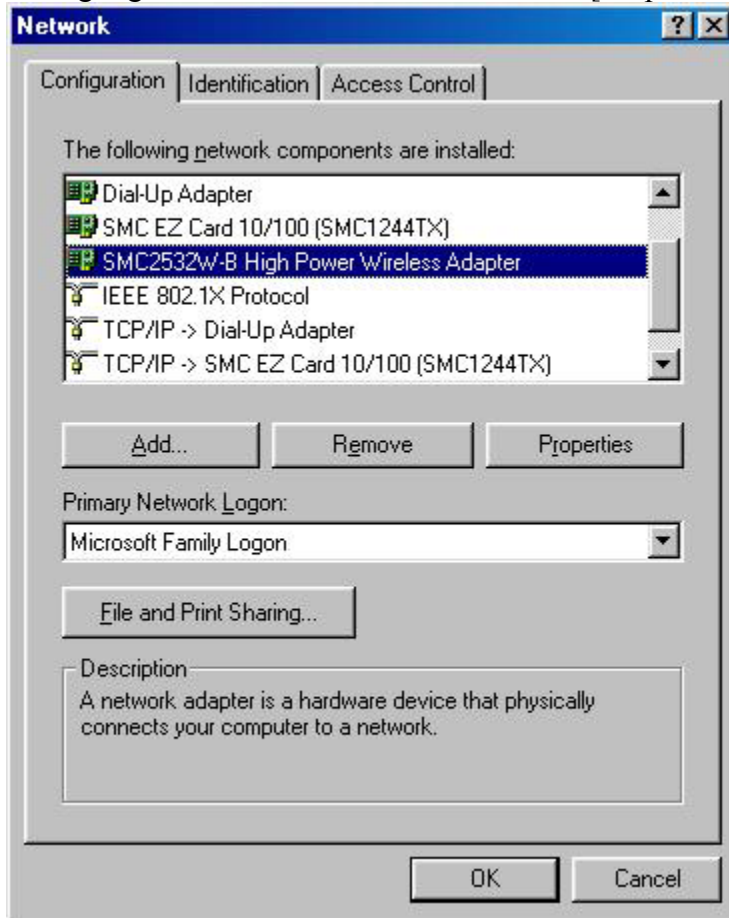


Upgrade Instructions (Windows 98 & ME)

1. Go to Start, Settings, Control Panel, and select [Network].



2. Highlight the SMC2532W-B and click on [Properties].



3. Click on [Configure], and go to the [Advanced] tab. Make sure the *Firmware Download* value is set to **Enable**.

