

Wireless Adapter Uninstall Guide for WINDOWS

The information in this guide applies to the:

- EZ Connect™ 802.11b Wireless PCI Card (SMC2602W)
 - EZ Connect™ 802.11b Wireless PC Card (SMC2632W)
-



Published:	4/12/2002
Issue Type:	HowTo
Operating System:	Windows

The following information will help you uninstall the SMC Wireless Utility and Drivers from the following operating systems:

- Windows® 95/98/ME
- Windows® NT4 SP6
- Windows® 2000
- Windows® XP

The uninstall process is divided into two steps. The first step will guide you through the process to uninstall the SMC Wireless Utility. The second step will guide you through the process to uninstall the SMC Wireless Adapter Drivers.

STEP ONE:

- Uninstall the SMC Wireless Utility

STEP TWO:

Section 2.1: Windows® 95/98/ME

- Access Device Manager
- Locate SMC Wireless Adapter
- Uninstall Adapter
- Complete Process

Section 2.2: Windows® NT4 SP6

- Access Network Properties
- Locate SMC Wireless Adapter
- Uninstall Adapter
- Complete Process

Section 2.3: Windows® 2000

- Access Device Manager
- Locate SMC Wireless Adapter
- Uninstall Adapter
- Complete Process

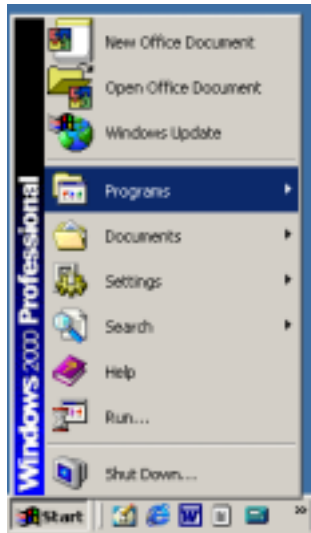
Section 2.4: Windows® XP

- Access Device Manager
- Locate SMC Wireless Adapter
- Uninstall Adapter
- Complete Process

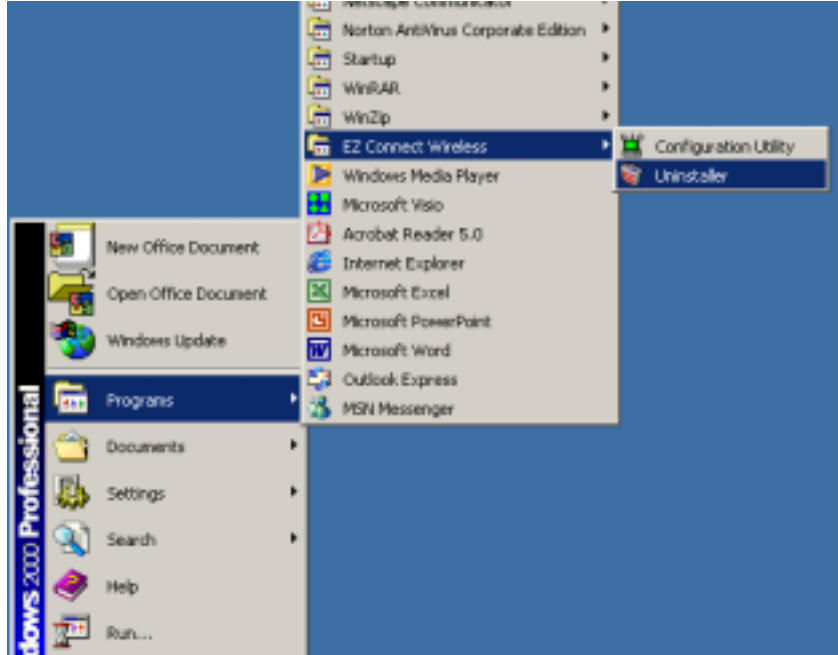
STEP ONE: Uninstall Wireless Utility

The uninstall process for the SMC Wireless Utility is the same for all windows-based operating systems.

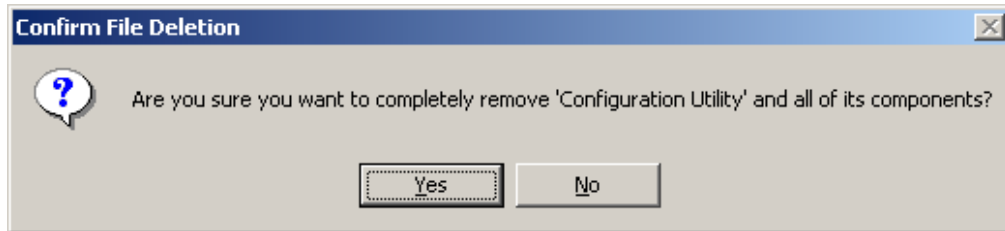
Step 1: Click [START] button and choose [Programs]



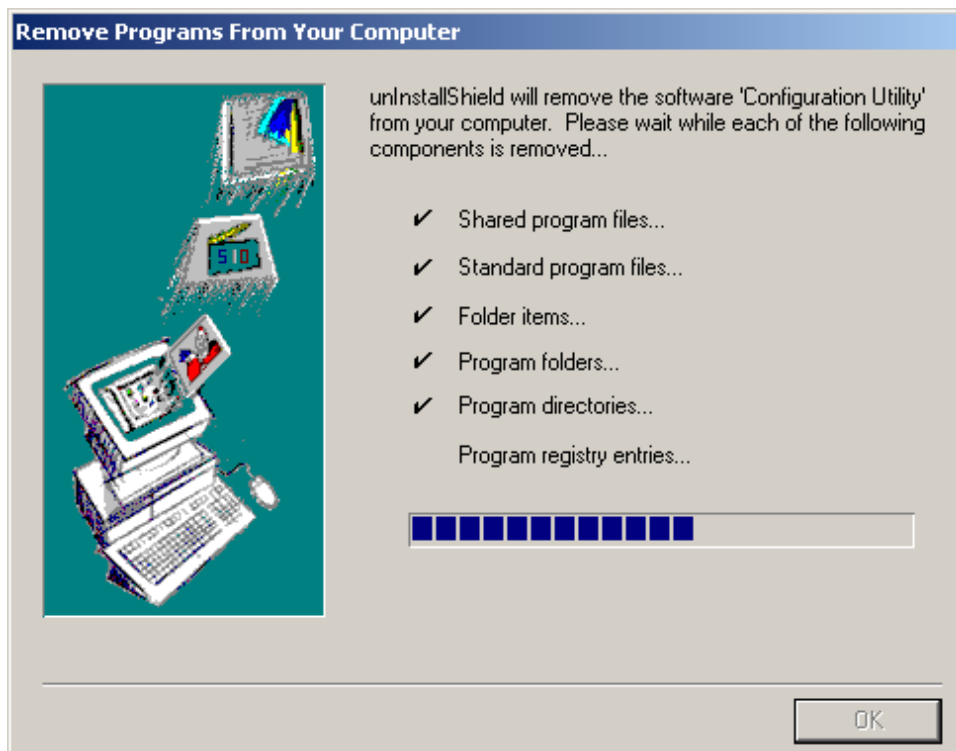
Step 2: Locate the EZ Connect Wireless folder, and select the [Uninstaller] icon.

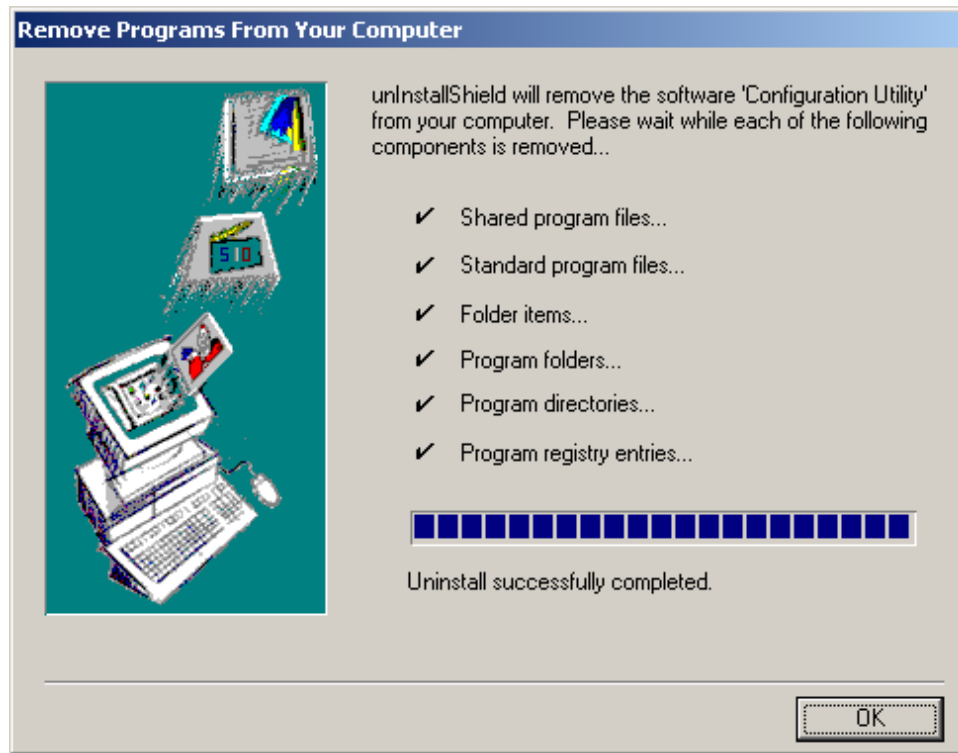


Step 3: When prompted with the Confirmation box shown below, click the [Yes] button to continue.



Step 4: When you confirm the Uninstall Process the Uninstall Wizard will launch.



Step 5: Uninstall process completed.

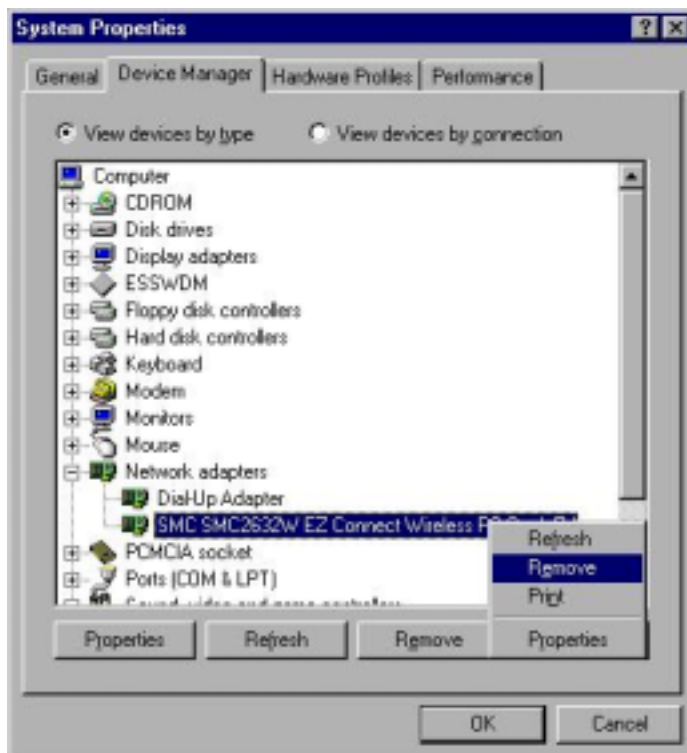
STEP TWO: Uninstall Drivers

SECTION 2.1: Windows® 95/98/ME

STEP 1: Right-click on the My Computer icon and select the [Properties] option.



STEP 2: View the Device Manager option by clicking on the [Device Manager] tab. To view the network adapters installed on your computer, locate the [Network adapters] section and click on the [+] sign to expand the section. Once expanded, locate your SMC SMC2632W EZ Connect Wireless PC Card or PCI Card. To remove this adapter, right mouse-click on the SMC adapter and select the Remove option.



STEP 3: When prompted with the Confirmation dialog box shown below, click on the [OK] button to continue.

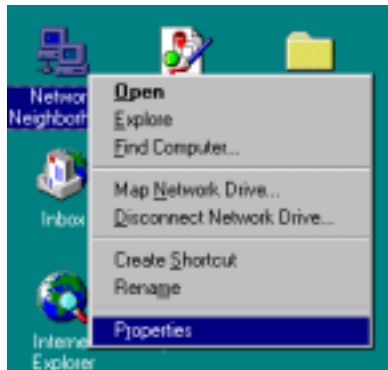


STEP 4: Once the SMC Wireless Adapter has been completely uninstalled, you will be asked to reboot the computer in order to save the new settings. To complete this process, click the [YES] button.

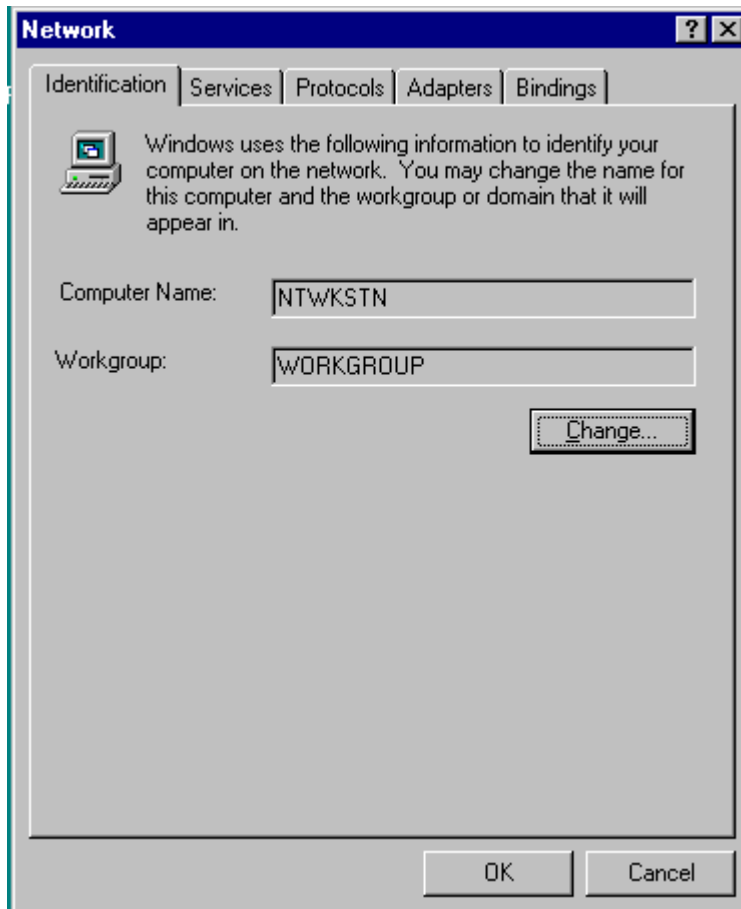


SECTION 2.2: Windows® NT4 SP6

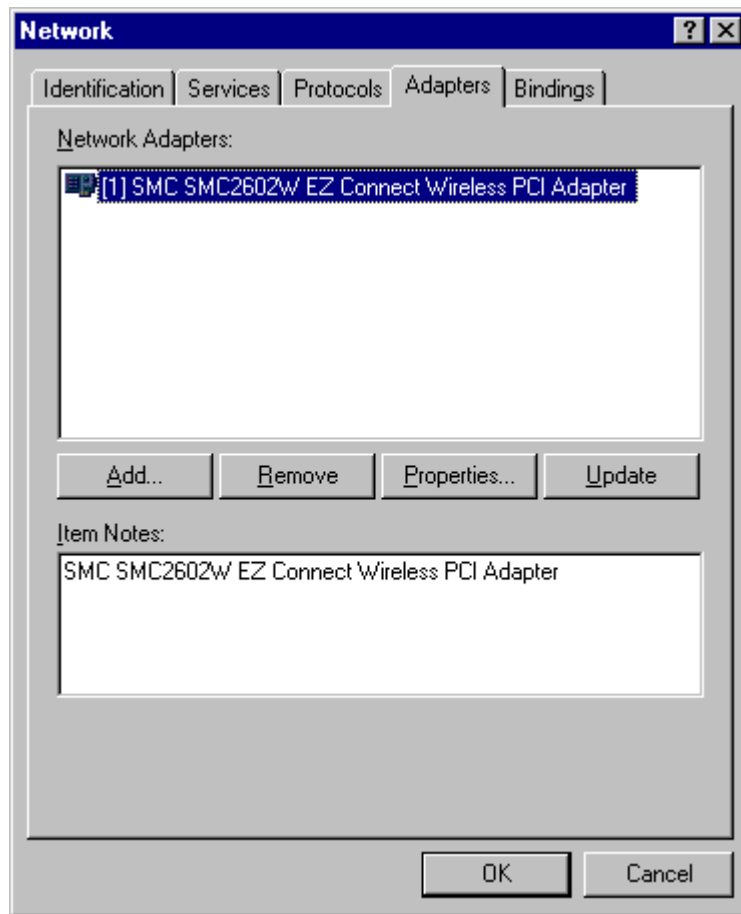
Step 1: Right-click on the Network Neighborhood icon and select the [Properties] option.



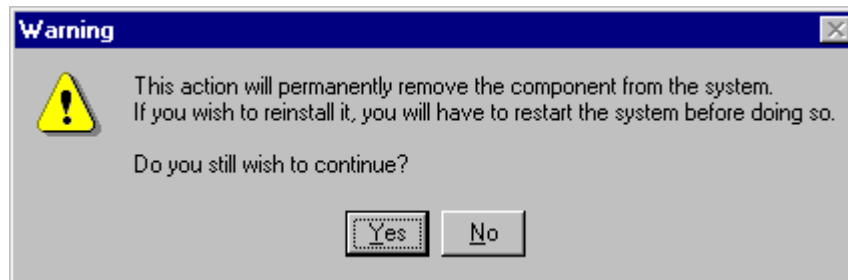
Step 2: On the Network Properties dialog box click the [Adapters] tab to view all of the network adapters installed on this computer.



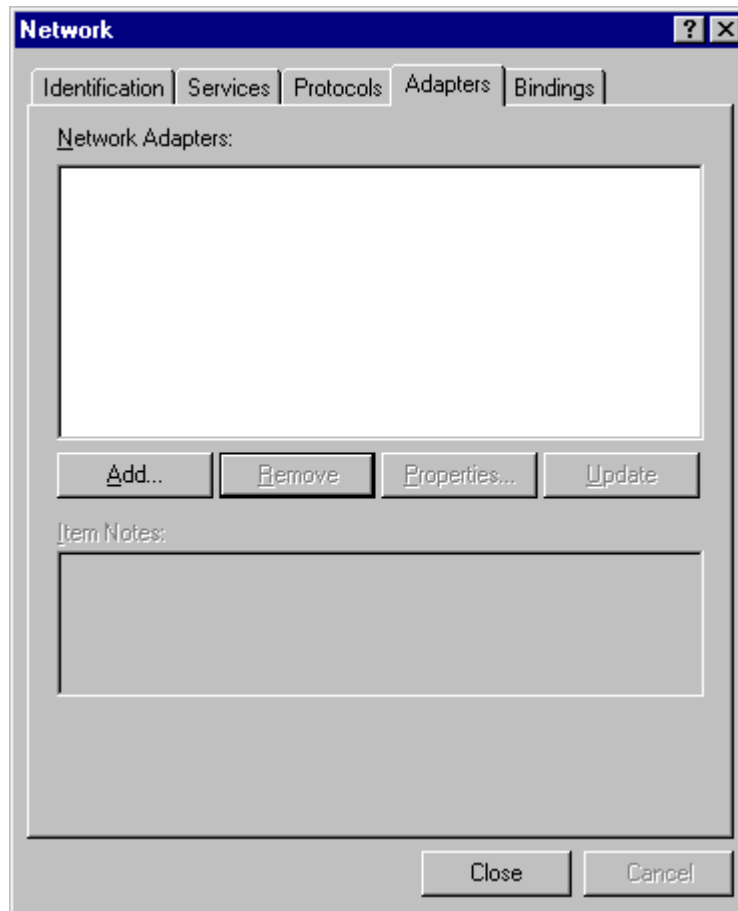
- Step 2: In the Adapters section, highlight the SMC Wireless Card and click the [Remove] button. This will remove the adapter and the drivers for that adapter. To complete the uninstall process click the [OK] button.



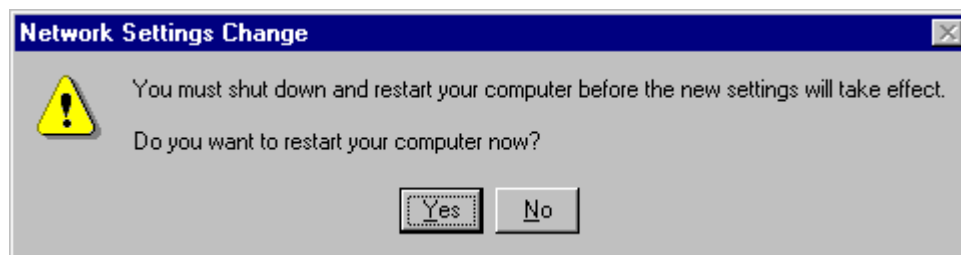
- Step 3: When prompted with the Warning dialog box shown below, click on the [Yes] button to continue.



- Step 4: If the SMC Adapter is the only network adapter installed on that computer you should see the dialog box displayed below. If you have other adapters installed they will be listed here. To Complete the uninstall process, click the [OK] button.



Step 4: To complete the uninstall process you will need to reboot your computer. To continue, click the [Yes] button.

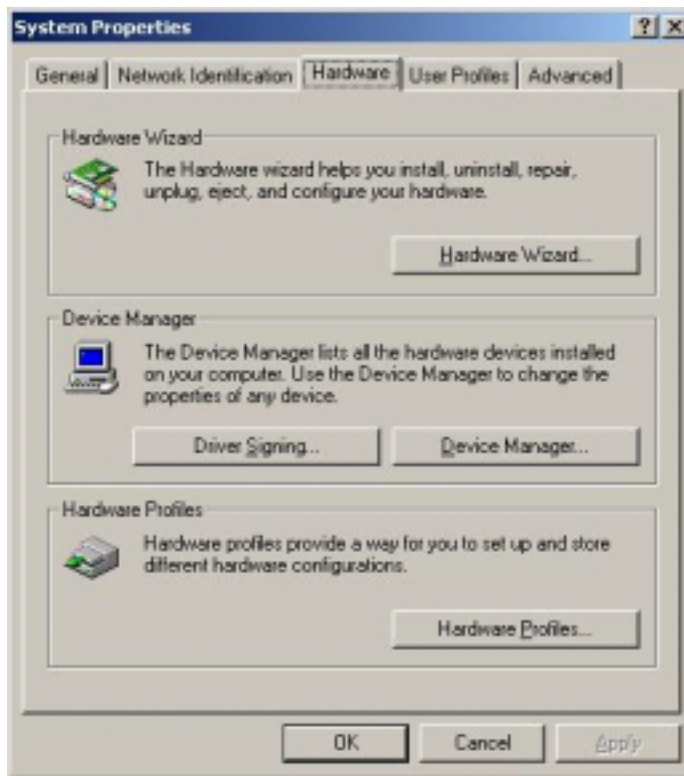


SECTION 2.3: Windows® 2000

STEP 1: Right-click on the My Computer icon and select the [Properties] option.

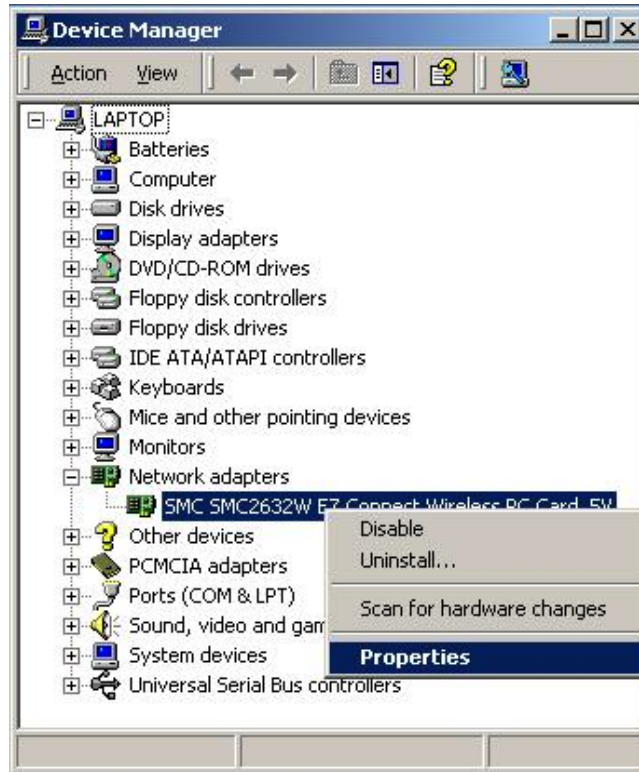


Step 2: On the System Properties dialog box, select the [Hardware] tab. In the Hardware section, locate and click on the [Device Manager...] button.



Step 3: To view the network adapters installed on your computer, locate the [Network adapters] section and click on the [+] sign to expand the section. Once expanded, locate your SMC SMC2632W EZ Connect Wireless PC Card or PCI Card.

To uninstall this adapter, right mouse-click on the SMC adapter and select the [Properties] option to launch the Properties dialog box.



Step 4: On the SMC Wireless Adapter properties dialog box, click on the [Driver] tab to view the Driver Information and options. Click on the [Uninstall] button to begin the uninstall process.



Step 5: When prompted with the Confirmation dialog box shown below, click on the [OK] button to continue.



Step 6: Once you have completed this process the Device Manager dialog box will refresh. If that was the only network adapter that you had installed on your computer then the [Network adapters] section will not be displayed. If you have any other adapters installed, the [Network adapters] section will be displayed, however the SMC Wireless Card will not be listed.

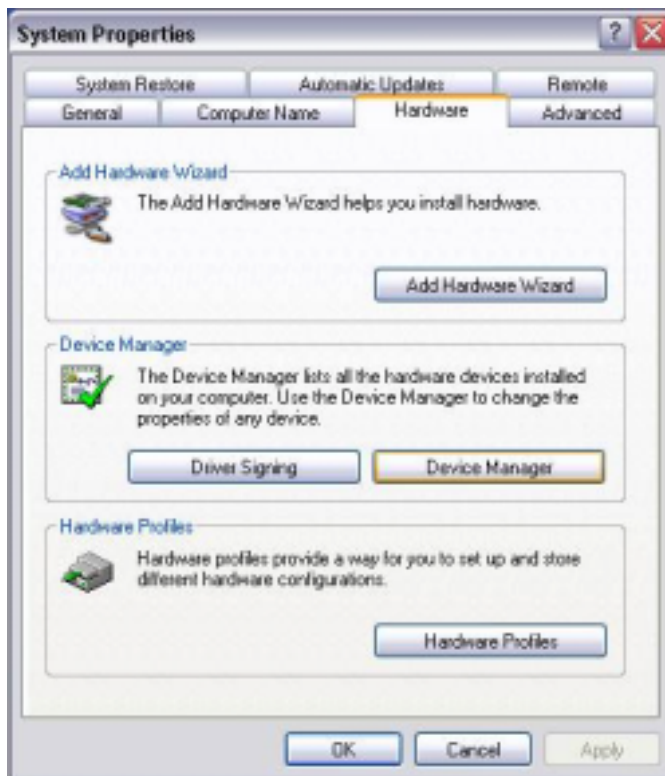


SECTION 2.4: Windows® XP

Step 1: Right-click on the My Computer icon and select the [Properties] option.

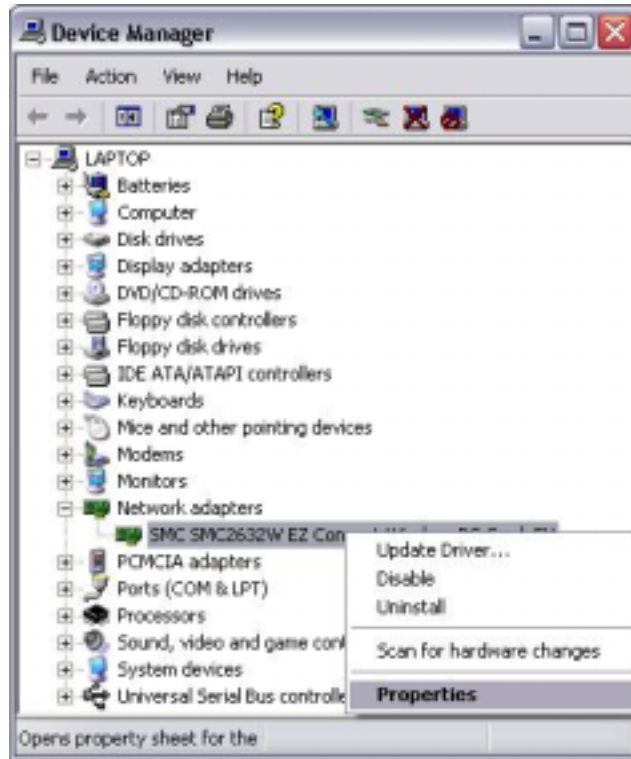


Step 2: On the System Properties dialog box, select the [Hardware] tab. In the Hardware section, locate and click on the [Device Manager] button.



Step 3: To view the network adapters installed on your computer, locate the [Network adapters] section and click on the [+] sign to expand the section. Once expanded, locate your SMC SMC2632W EZ Connect Wireless PC Card or PCI Card.

To uninstall this adapter, right mouse-click on the SMC adapter and select the [Properties] option to launch the Properties dialog box.



Step 4: On the SMC Wireless Adapter properties dialog box, click on the [Driver] tab to view the Driver Information and options. Click on the [Uninstall] button to begin the uninstall process.



Step 5: When prompted with the Confirmation dialog box shown below, click on the [OK] button to continue.



Step 6: Once you have completed this process the Device Manager dialog box will refresh. If that was the only network adapter that you had installed on your computer then the [Network adapters] section will not be displayed. If you have any other adapters installed, the [Network adapters] section will be displayed, however the SMC Wireless Card will not be listed.

