

Sonnet DX800 and RX1600 pseudo driver installation instructions (Windows Vista 32-bit & 64-bit)

Why does Windows prompt to install driver software every time the Sonnet SAS Expander is connected to the Sonnet RAID controller? Additionally, the Sonnet SAS Expander appears in the Windows Device Manager under "Other devices" with a question mark embedded within the icon, but the Sonnet enclosure appears to be working, even though the driver install process was canceled and a driver was never installed.

Solution:

Install the Sonnet pseudo driver; however, not installing the driver will still allow the Sonnet SAS Expander to work without any loss of functionality.

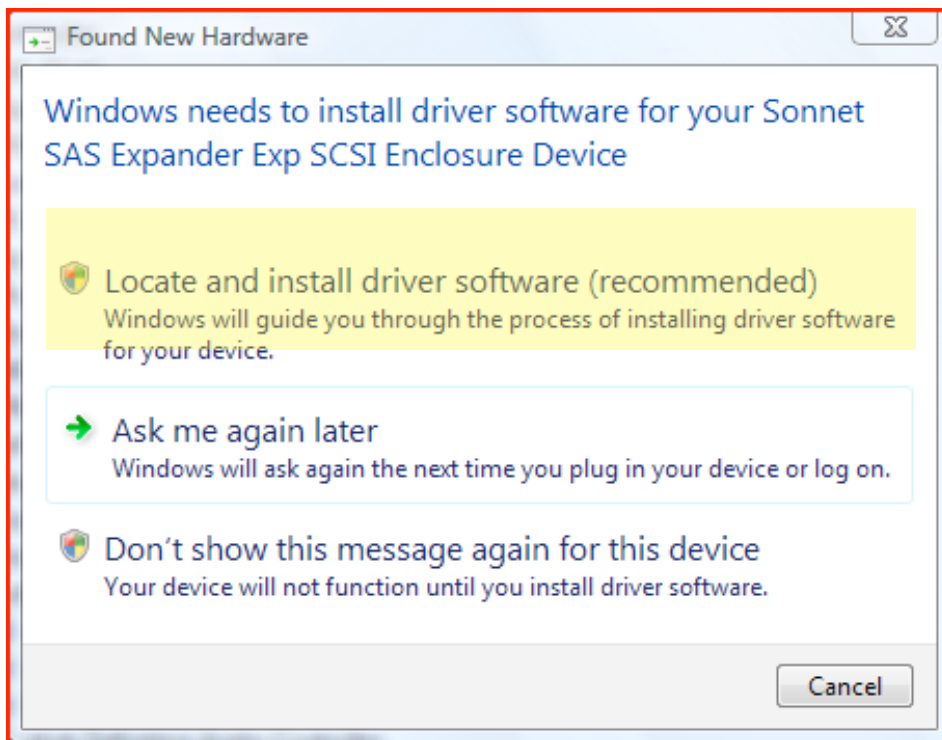
The Sonnet DX800 and RX1600 use a pseudo (dummy) driver to prevent Windows from prompting to install a device driver every time the enclosure is connected to the Sonnet RAID controller. Additionally, in the Windows Device Manager, installing the pseudo driver will remove the Sonnet SAS Expander from the "Other devices" device type category and place it under the "System devices" device type category; a question mark will no longer be embedded within the device icon.

Note: unlike the Fusion DX800, the Fusion RX1600 contains two SAS expander link switches, which will cause Windows to list two Sonnet SAS Link Switch Devices within the Windows Device Manager.

Important note: Windows Vista and Windows 7 may automatically install a generic Microsoft pseudo driver. This generic driver provides the same functionality as the Sonnet pseudo driver, but Microsoft's pseudo driver will display a different device name under the "System devices" device type category in the Device Manager. The Microsoft generic pseudo driver can be identified by the name of "Generic SCSI Enclosure". The Sonnet pseudo driver can be identified by the name of "Sonnet SAS (Serial Attached SCSI) Link Switch Pseudo Device". Again, both drivers will provide the same functionality.

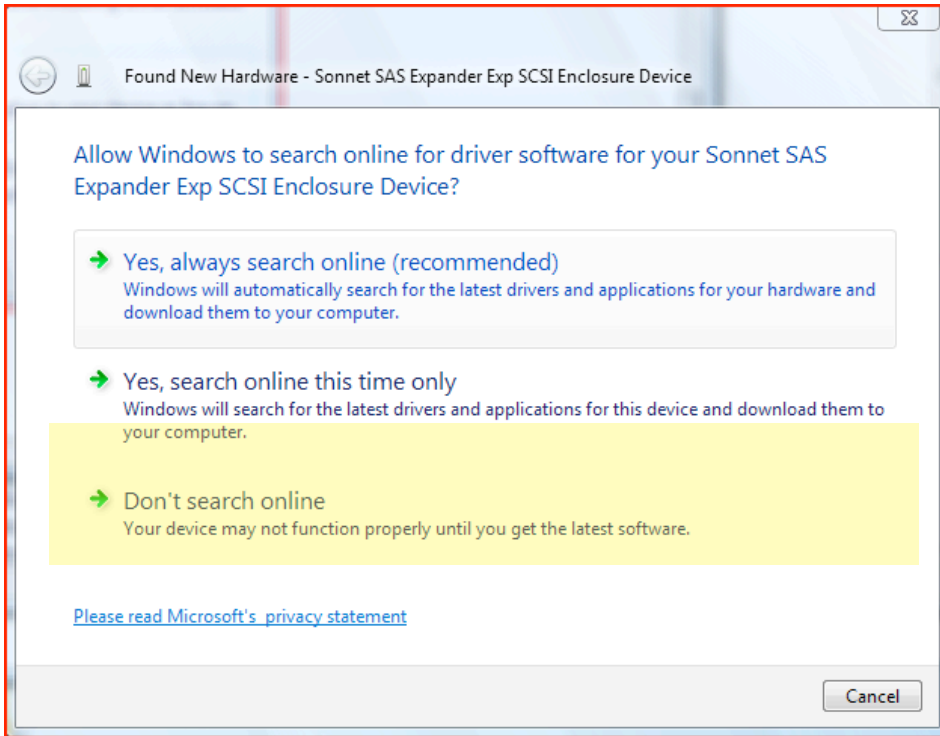
INSTRUCTIONS:

1.0. Select "Locate and install driver software (recommended)" option. If User Account Control is enabled a message will appear requesting permission, please click the "Continue" button.

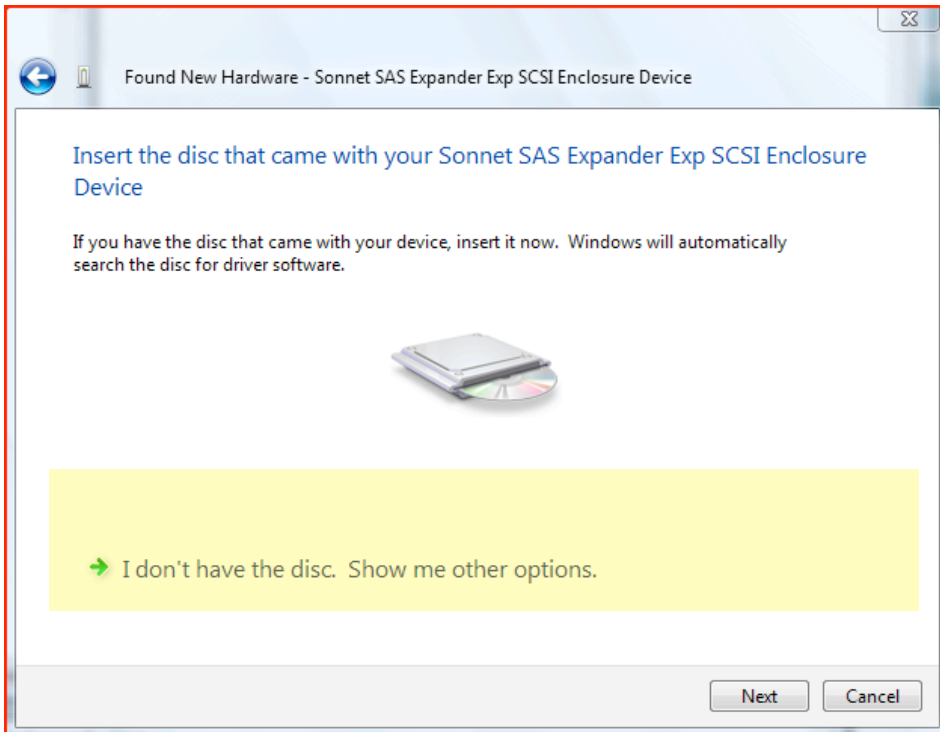


Sonnet DX800 and RX1600 pseudo driver installation instructions (Windows Vista 32-bit & 64-bit)

2.0. A new dialog window will appear, please select the "Don't search online" from the available options.

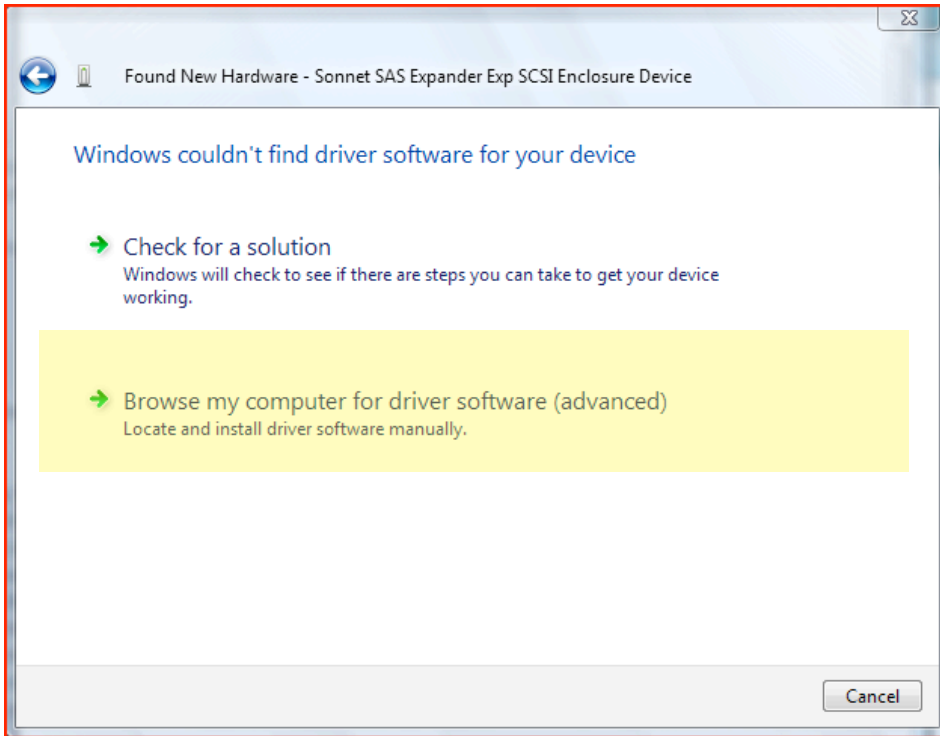


3.0. A new dialog window will appear, please select "I don't have the disc. Show me other options." option.

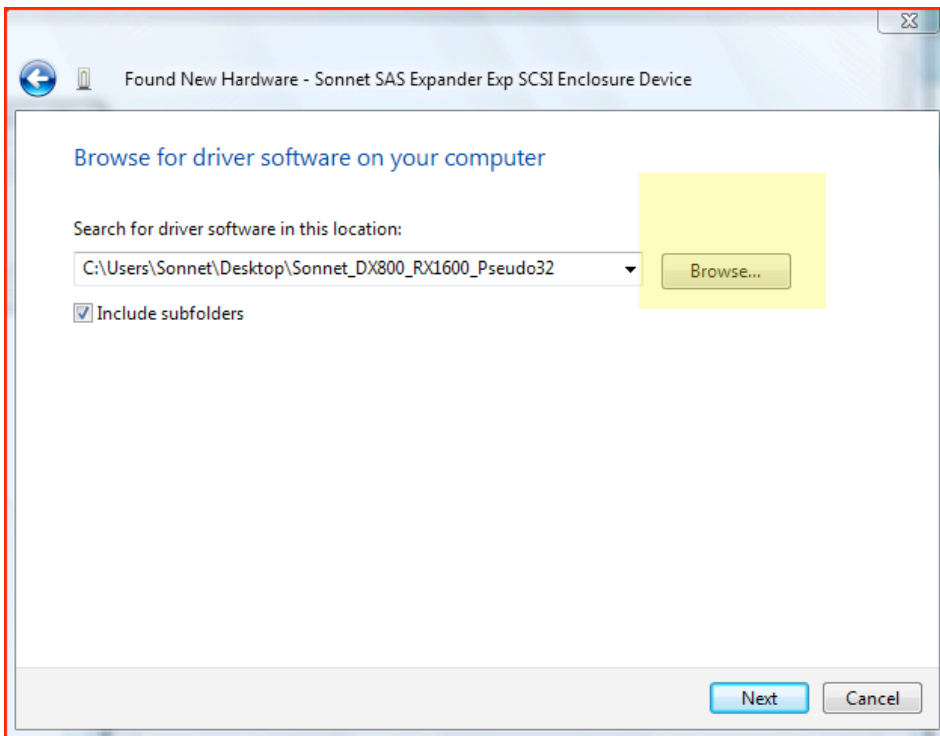


Sonnet DX800 and RX1600 pseudo driver installation instructions (Windows Vista 32-bit & 64-bit)

4.0. A new dialog window will appear, please select the "Browse my computer for driver software (advanced)" option.

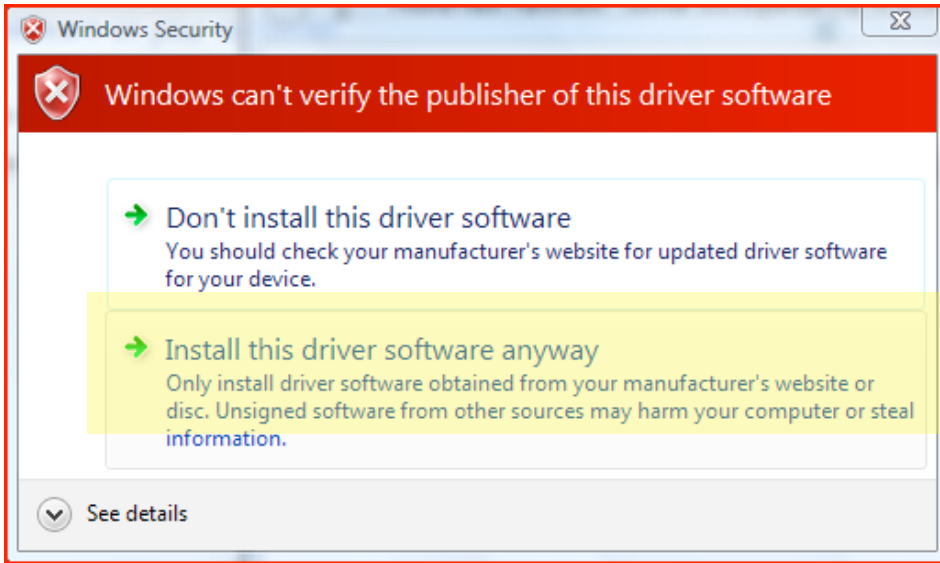


5.0. A new dialog window will appear, please select the "Browse" button to navigate to the location of the downloaded driver. Please select either the 32-bit or 64-bit driver depending on the Windows version the driver will be installed on. When finished, please click the "Next" button.



Sonnet DX800 and RX1600 pseudo driver installation instructions (Windows Vista 32-bit & 64-bit)

6.0. A new dialog window will appear, please select the "Install this driver software anyway" option.



7.0. Install is complete. Please click the "Close" button to complete the installation. Your Sonnet SAS Enclosure is now ready for use.

Note: the enclosure will appear in the Device Manager under System devices as "Sonnet SAS (Serial Attached SCSI) Link Switch Pseudo Device". Unlike the DX800, the RX1600 contains two link switches, so two devices will be listed.

