

## .NET XYGraph Installation Manual

A design license is required for each computer this software is installed on. Runtime license is free. This software may only be used according to the [License Agreement](#).

### Graph Control Installation

Using our controls is a simple 4 step process:

---

#### Step 1 - download and unzip the control package

Download and unzip the package. We suggest you place the DLL in a local directory such as C:\componentXtra that is easy to remember.

---

#### Step 2 - register the control in your application

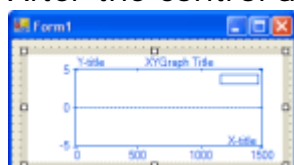
After having installed the control on your PC, you have to tell your application where it is.

#### Registering the Control in Microsoft Visual Basic .NET and Microsoft C# .NET:

1. Open your solution or project and display the form that you want to add the Graph to. Choose menu **Tools | Add/Remove Toolbox Items**. Select the **.NET Framework Components folder**. Choose **Browse** and select the *componentXtra XYGraph Control*.



2. After the control appears in the Toolbox, add it to your form.

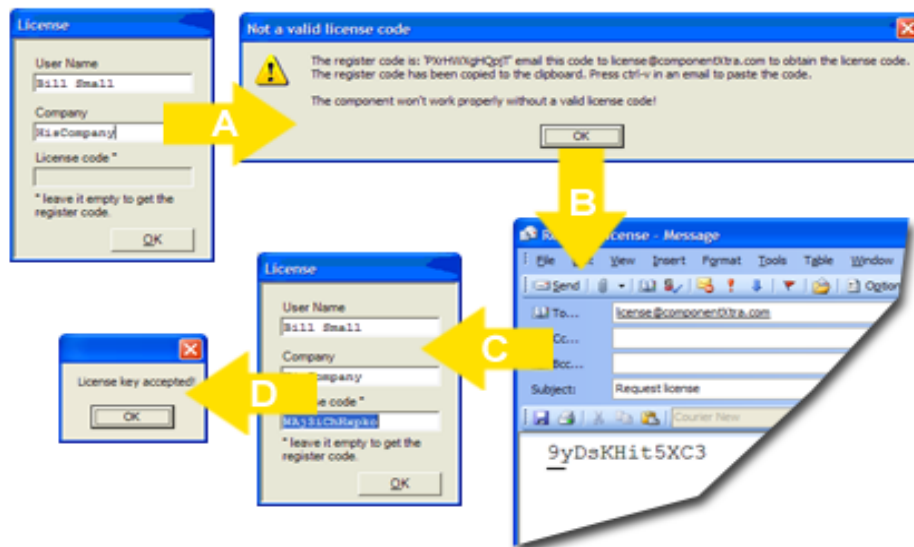


---

### Step 3 – get your license

Follow the four actions below:

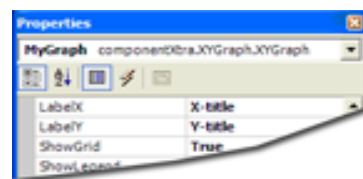
- A. Type in your name and company information.
- B. Press OK and open your e-mail program.
- C. Type 'license@compoentXtra.com' in the 'To' field and paste the register code (Ctrl-V) in the message body and send.
- D. When componentXtra returns the license code, add the component once more to a form and insert the license code.



*(You can skip this step, if you are using the free limited version.)*

### Step 4 - adjust the properties of the control

After you insert the control in your application as described in step 2, you may adjust the properties of the control. To do this, you can change the properties with program code or you can right-click on the control and choose **Properties** if it is installed on a form. =



All available properties and method is described in the help file 'XYGraph.chm'.